

Regional Climate Watch

To: NMHS in the western Pacific Islands region

The Regional Climate Watch is a guidance product designed for heightening National Meteorological and Hydrological Services awareness of an ongoing or high probability foreseen climate anomaly and its potential impacts on communities so that they can take appropriate action. This watch is disseminated to serve as a mechanism for initiating national preparedness activities and/or a series of events that affect decision-making.

After consultation between the Bureau of Meteorology and SPREP the Pacific RCC-Network Node on Climate Monitoring issues the following guidance information:

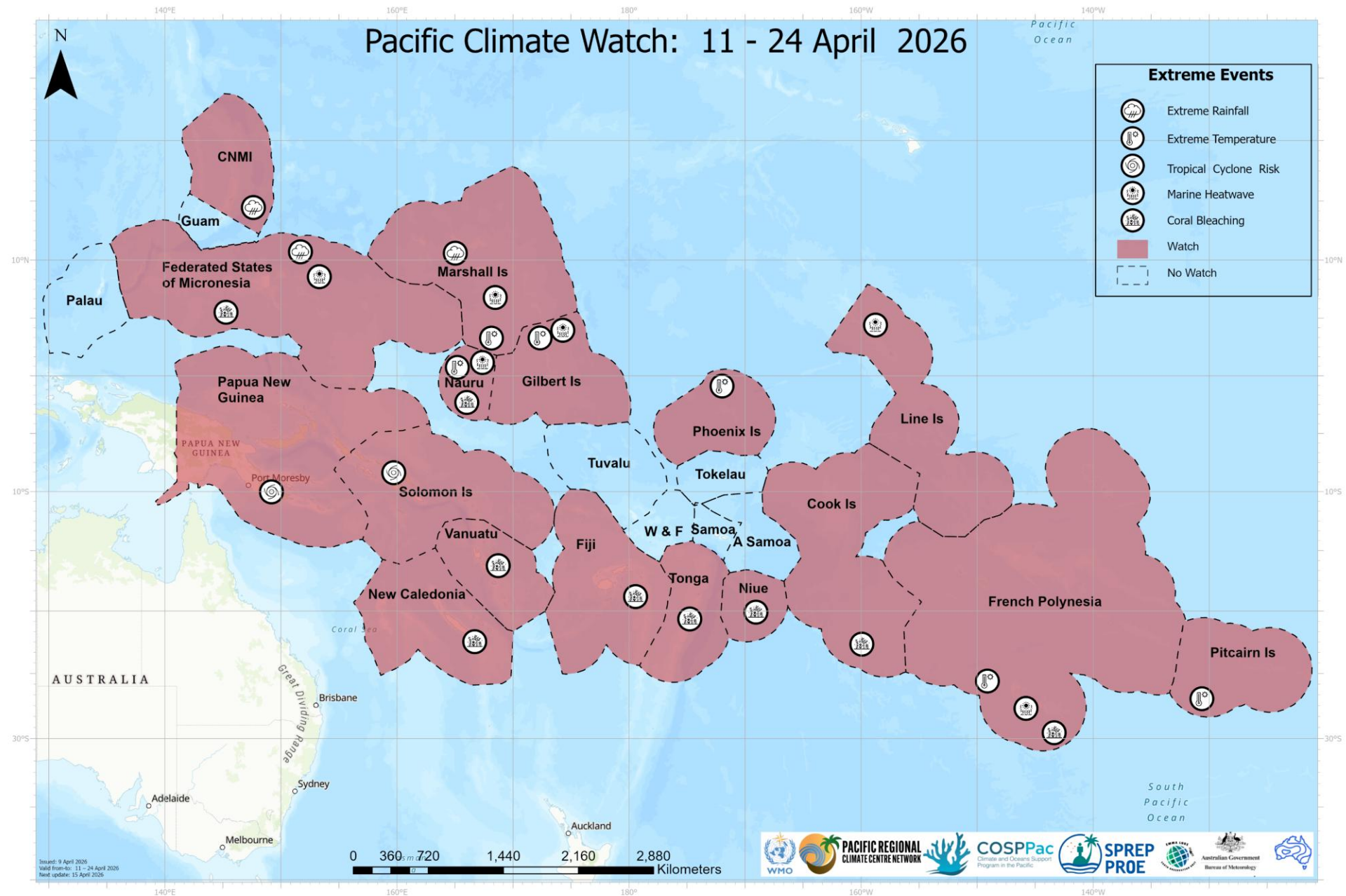
Product ID: 20260408-01

Issued: 9 April 2026

Valid from-to: 11 – 24 April 2026

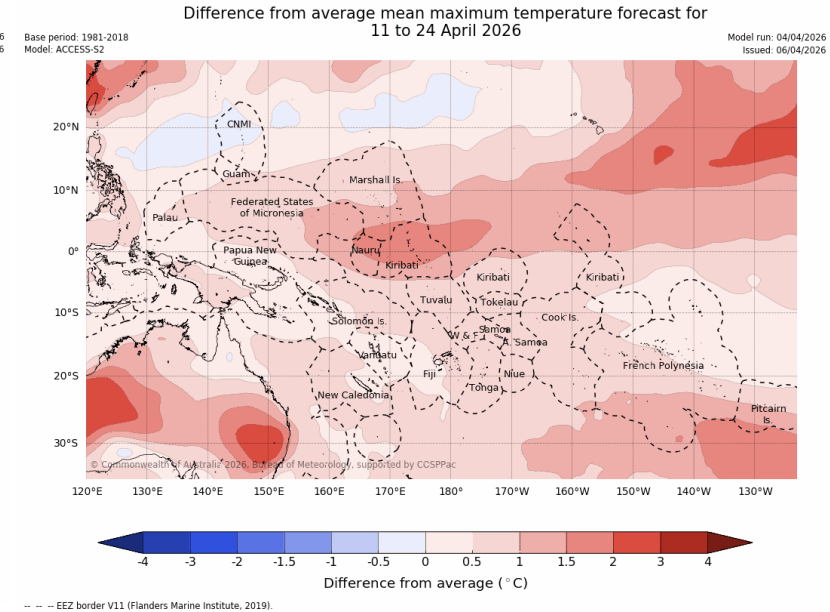
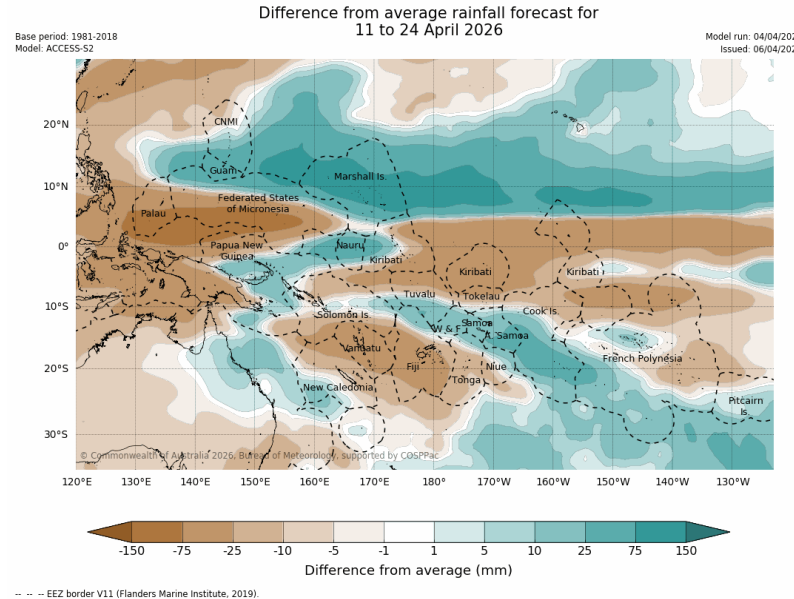
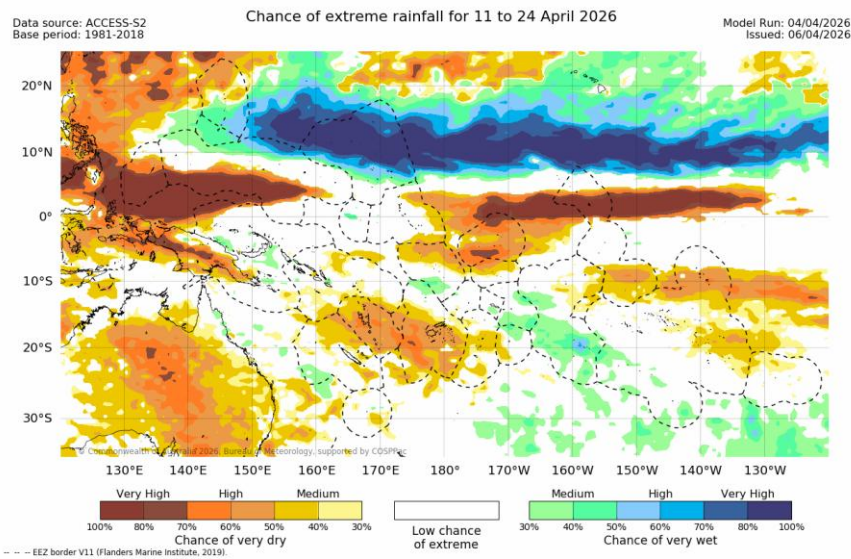
Next update: 15 April 2026





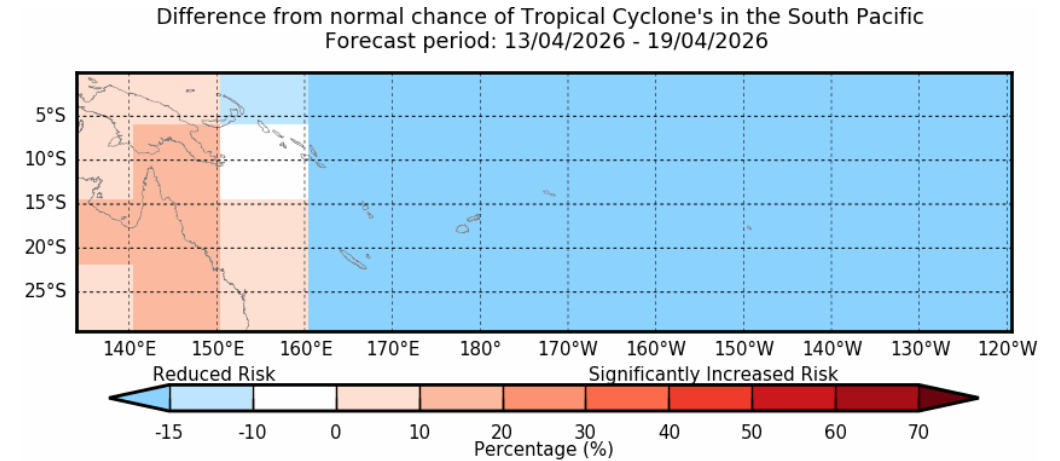
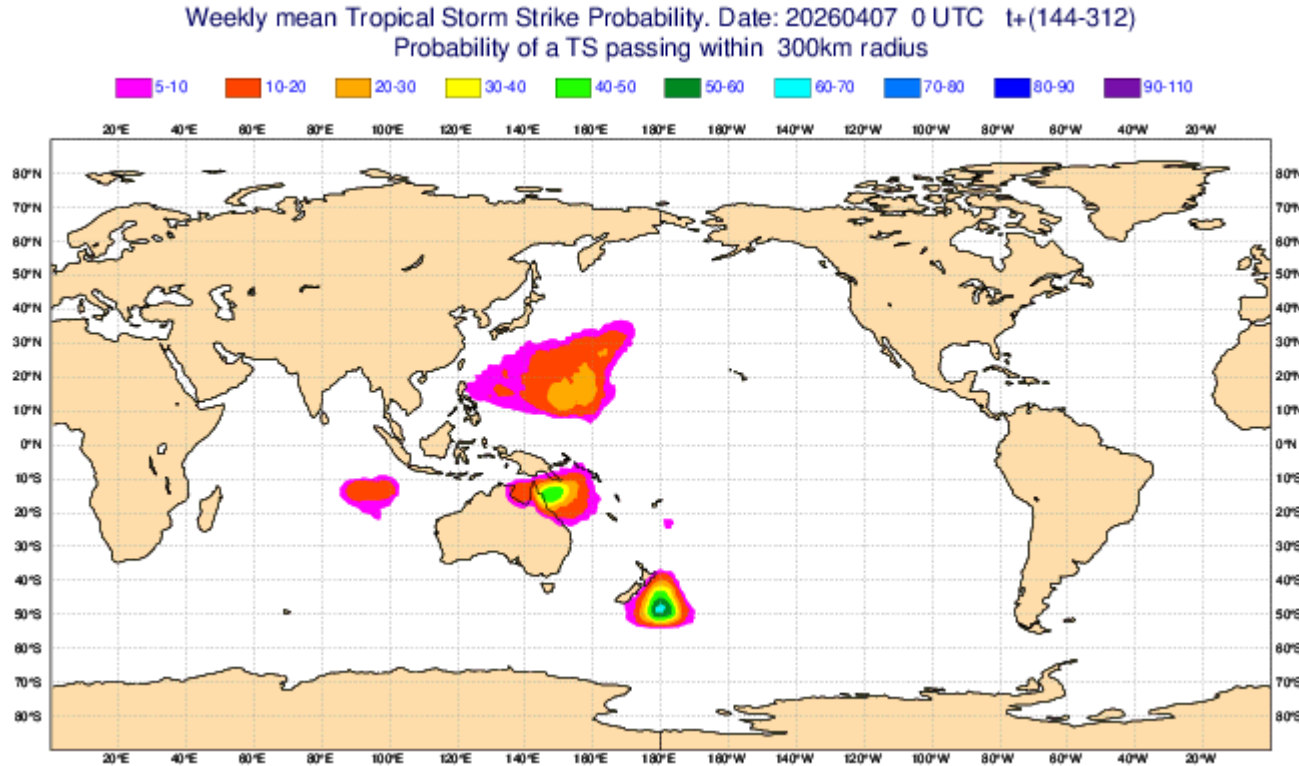
Extreme Rainfall and Extreme Temperature Advisory:

- There's a very high chance of Very Wet conditions for the fortnight of 11 – 24 April 2026 for the following EEZs: south-eastern CNMI, northern FSM, and RMI. Fortnightly anomalies are forecast to exceed +75 mm over northern FSM and RMI. The watch has been cancelled for PNG and Vanuatu. Watch for Guam has been cancelled.
- Positive maximum and minimum air temperature anomalies are forecast to exceed 1.5 °C for the fortnight 11 – 24 April 2026 over Nauru, Gilbert Islands (Kiribati), southern RMI, parts of southern French Polynesia and southern Pitcairn Islands.



Tropical Cyclone Advisory:

- There is an increased risk of Tropical Cyclone (TC) occurrence near the Solomon Islands and PNG for the week of 13 – 19 April 2026, according to the ACCESS-S and ECMWF models. Currently Severe TC Maila is moving slowly southwest in the Solomon Sea and Severe TC Vaianu is south of Fiji. The watch for Vanuatu and New Caledonia is cancelled.



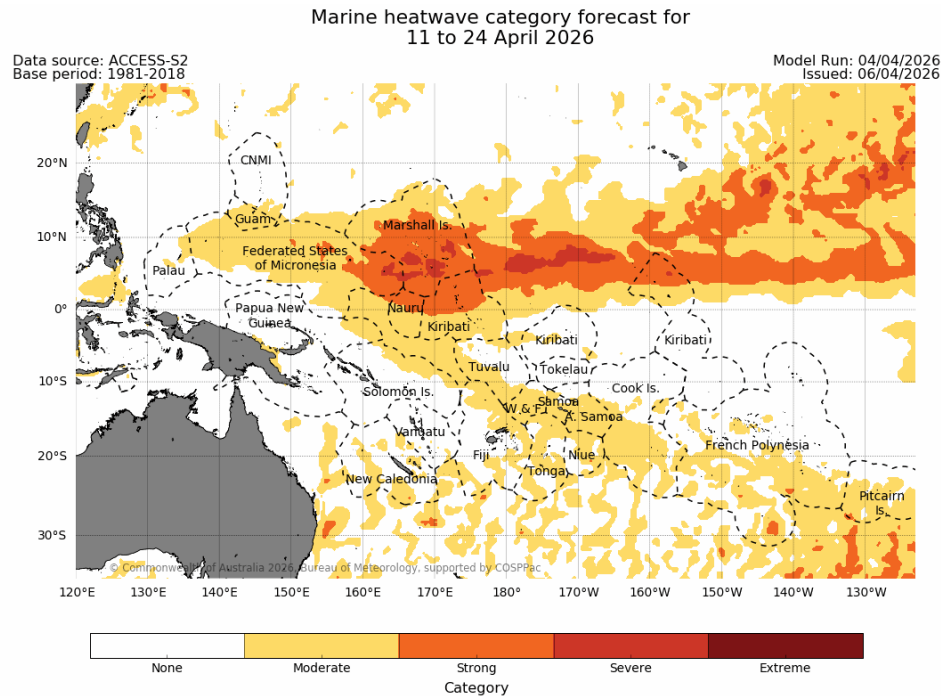
Calibrated Model anomaly probability in overlapping 15 x 20 degree boxes
© Commonwealth of Australia 2026, Australian Bureau of Meteorology

Model: ACCESS_S2 Model Run: 05/04/2026 Issued: 07/04/2026

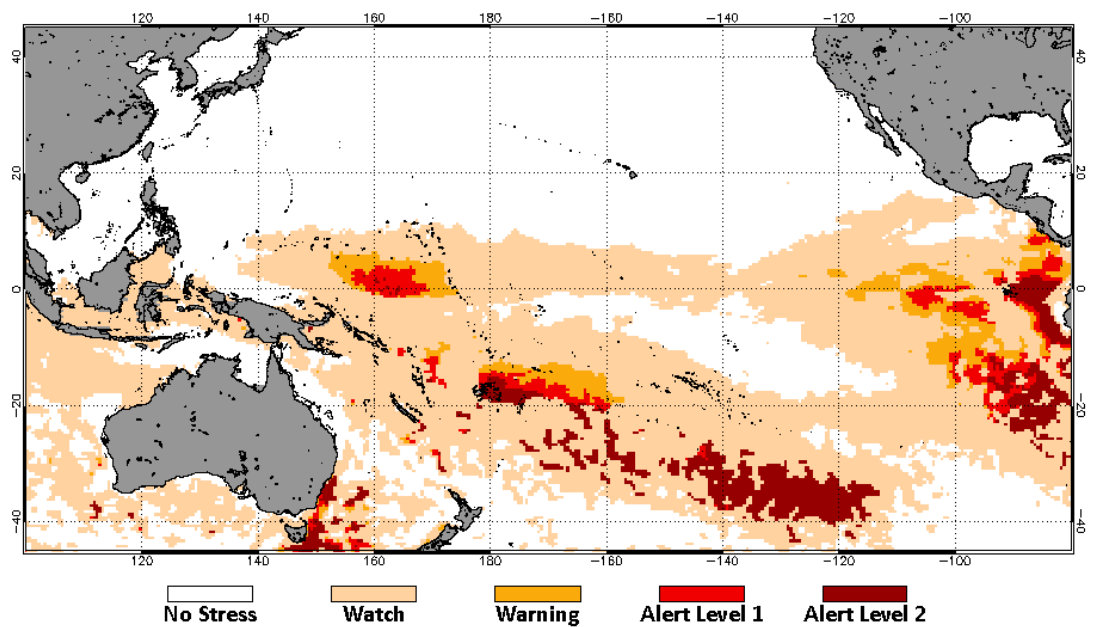


Marine Heatwave and Coral Bleaching Advisory:

- Marine heatwaves in the strong category are forecast to develop for parts of the following EEZ's for the fortnight 11 – 24 April 2026: RMI, Chuuk, Pohnpei and Kosrae (FSM), northern Nauru, localised spots in far southern French Polynesia and the northern Gilbert (Kiribati). There may be impacts on ocean ecosystems, including stress on marine organisms, species migration, and algal blooms in these locations. The watch for the Line Islands is cancelled.
- There remains an alert for coral bleaching for the following EEZs: southern FSM, Nauru, northeastern Vanuatu, southern New Caledonia, Fiji, Tonga, Niue, the far southern Cook Islands and far southern French Polynesia. The alert level 2 region in the southern Pacific has weakened since last week. The alert for eastern PNG and Solomon Is has been cancelled.



2026 Apr 7 NOAA Coral Reef Watch 60% Probability Coral Bleaching Heat Stress for Week 1 (Apr 12 2026)
Experimental, v5.0, CFSv2-based, 112 Ensemble Members



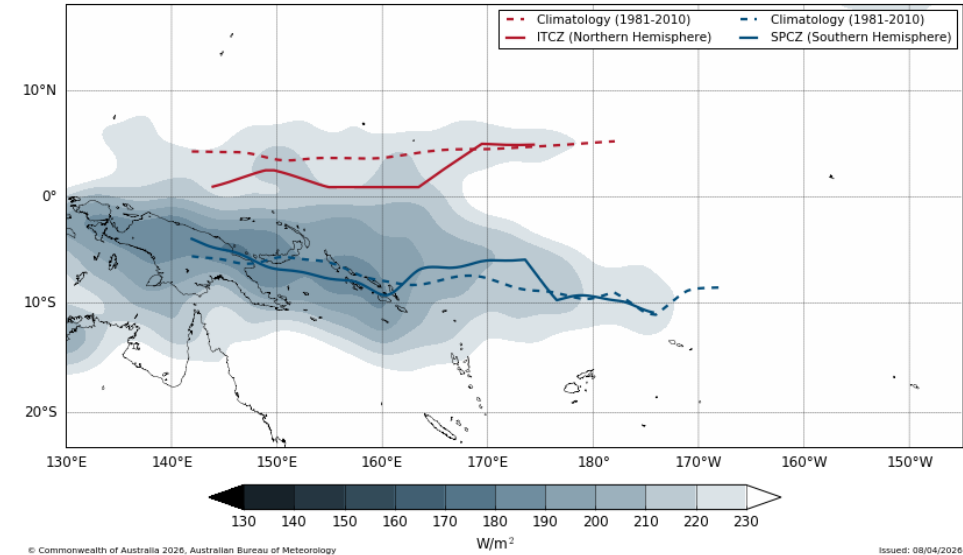
Climate Influences:

- **El Niño-Southern Oscillation (ENSO)** indicates La Niña has ended.
- The **Indian Ocean Dipole (IOD)** is neutral.
- Additional information is available via the Southern Hemisphere Monitoring Update - <http://www.bom.gov.au/climate/enso>.
- Over the past 30 days, outgoing longwave radiation observations indicate that the **Intertropical Convergence Zone** is slightly south of its normal climatologically location for this time of year. The **South Pacific Convergence Zone** is has returned to its usual location.
- The **Madden-Julian Oscillation (MJO)** is in the unit circle. It is forecast to strengthen in the coming days as it moves into the western Pacific region, potentially influencing local weather patterns.

Outlooks: <http://www.bom.gov.au/climate/pacific/outlooks/>,
<http://oceanportal.spc.int/portal/ocean.html>, [ECMWF Tropical Cyclone Outlook](#)
[NOAA Coral Reef Watch 60% Probability Coral Bleaching Heat Stress Weekly Outlooks \(CFS based\)](#)

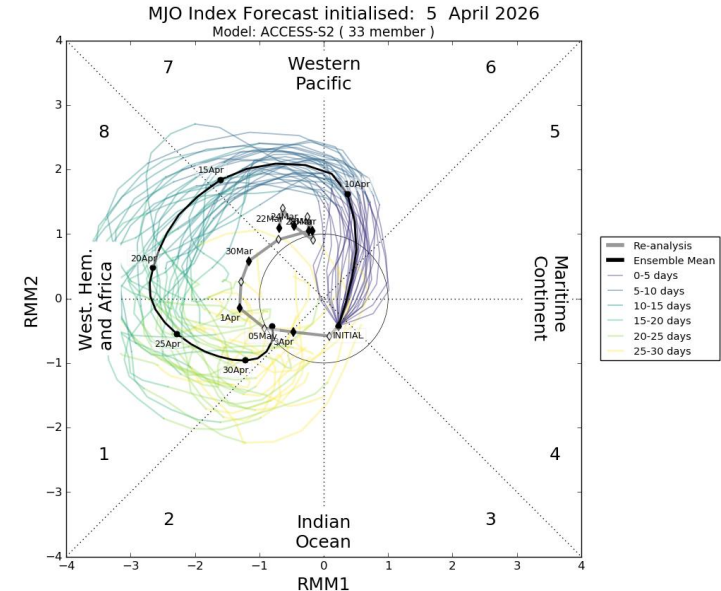
Influences: <http://www.bom.gov.au/climate/enso/>

30 Day Average Outgoing Longwave Radiation (OLR) minimum to 2026-04-05



© Commonwealth of Australia 2026, Australian Bureau of Meteorology

Issued: 08/04/2026



About Regional Climate Watch guidance

- This information should be used as guidance for the National Meteorological and Hydrological Services (NMHS) in a pre-operational mode. It is up to NMHSs in the specified regions to monitor the status and evolution of the current climate conditions closely and to consider issuing a national advisories.
- We will monitor the evolution of the anomaly, issue updates if significant change arise and close the advice when no clear signal can be detected in the forecasts.
- For more information and feedback please email pacificclimateservices@bom.gov.au. Also, any suggestions on further pieces of information needed by NMHSs is highly welcomed!
- Please note that further climate monitoring and prediction information can be obtained from Pacific RCC-N website (<https://www.pacificmet.net/rcc>)
- The Pacific RCC Network Node on Climate Monitoring is responsible for providing Regional Climate Watch guidance information for NMHSs' own consideration for issuing climate advisories for their territory. The regional watch is currently sponsored by the Australian and New Zealand funded Climate and Ocean Support Program in the Pacific (COSPPac) and delivered by Node on Climate Monitoring consortium members that are COSPPac implementation partners (Bureau of Meteorology and SPREP).

