



COPE

.....
Mautali ma e tau lekua tupu fakafo.
.....

TAU MOUGA PĀ

Tohia e Martha Keswick +

Mariko Jesse +

Timothy Sim







Mautali ma e tau lekua tupu fakaofu – Tau Mouga Pā

Nakai maeke ke tohia mo e nakai fai tonuhia.

© 2022 Martha Keswick, Mariko Jesse & Timothy Sim

Nakai maeke ha vala ke liu lolomi.

TOHIA Martha Keswick

TA FAKATINO Mariko Jesse

FAKATONUTONU Timothy Sim

.....

FAKAMANAIA E PEPA Reita Wong

TAKITAKI HE MATAGAHUA Christine Messervy



MARKETING MANAGER Lina Suarez

.....

MATAKAU TALAGA PPP Company Limited, Hong Kong

.....

www.cope-disaster-champions.com

  COPEdisasterchampions

.....

Kua fiafia lahi mo e Oue Tulu Tulou ki a Mrs. Birtha Lisimoni-Togahai ke he fakaliliuaga mahuiga he tohi nei. Fakaauae foki kia Mrs Rossylynn Pulehetoa-Mitiepo ha kua lagomatai e fakakatoatoaaga he fakaliliuaga.

Kua maeke ke moua laulahi he tau ohi Niue oti ma è maamaaga malutia mo e fetuiaga laulahi.

Tau Fakaauae Lahi ki a:

Munasri

Professor Tamsin Mather and Professor David Pyle, University of Oxford

COPE TAU MOUGA PĀ TAU MATUTAKIAGA



GOVERNMENT OF NIUE



TAU FAKATONU SAIENETISI





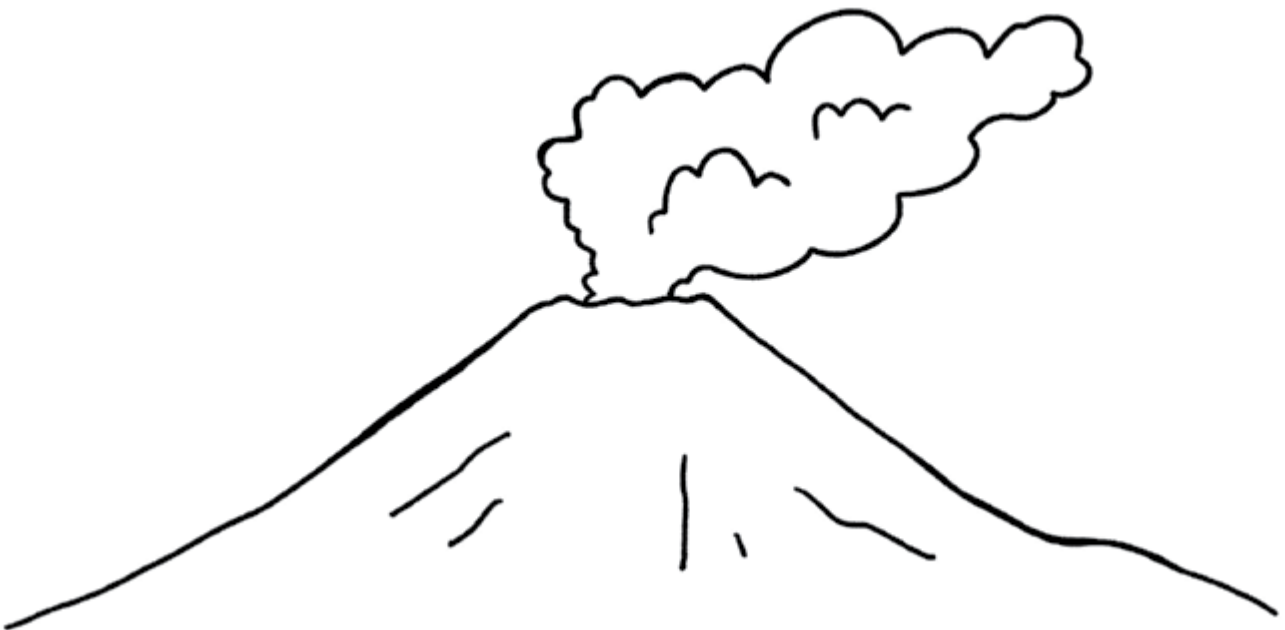
COPE

.....
Mautali ma e tau lekua tupu fakafo.
.....

TAU MOUGA PĀ

Tohia e Martha Keswick +

Mariko Jesse + Timothy Sim



*Ko hai e
Takitaki Tupuna ko Fu?*

Ko e faiaoga latau kung fu ko ia foki ne fakatu e Aoga Mouga Emei Wushu, taha higoa foki haana ko Shifu, ko ia malolō e moui akonaki mo e kafilo foki ka e lahi mahaki haana atefua. Fetamakina a ia kua mate he magaaho ne malolo e aoga he to e mafuike Wenchuan he mahina Me 2008 ti tali mai kua foaki haana moui ke fakamatutūhifo e tau malona ha ko e tau lekua tupu fakafo.



*Ko e heigoa e
Matakau COPE?*



Ko e matakau he lalolagi ne paleko atu ke he tau lekua tupu fakafo, galo atu ki loto he maaga ko Sichuan ne tamata he Takitaki Tupuna ko Fu. Ko e Matakau COPE – ko Candy, Ollie, Ping mo Eddy ko e tau fanau fuata nakai fai mamatua kua tamai a lautolu he tau kaina leveki ke nonofo ke he Aoga COPE mo e fakaako ke he tau puhala ke tukutukuhifo e tau malona mai he tau lekua tupu fakafo.



**Sense
KO E GATA**

Ko e gata fulufuluola 25 e tau. Moua e ia e lotomatala ke talaiki e tau lekua tupu fakafo. Fagai aki he Takitaki Tupuna ko Fu e tau punua kumā a ia he tau mahina oti.

**Rescue
KO E
MANU KULĪ**

Ko e kulī Kunming lahi mahaki, 8 tau. Makaka lahi a Rescue he kumi e tau tagata kua galo. Fiafia foki a ia ke poki lago.



Ko e Matakau C O P E



Candy

**KO E TAMA
FIFINE LEVEKI
ATU KE HE FALU**

12 tau tau moui mai he maaga ko Kranshoek I Afelika Toga. Ko Candy, malolō, alaala mo e fiafia ke ta e tau palau mo e koli hula hupi. Ko e gahua haana ke leveki atu ke he tau matakau ne tu hagahagakelea e tau momoui lagā mai ha ko e tau lekua tupu fakafofo tuga e tau fanau ikiiki, tau momotua mo lautolu ne tino lololele.

*Lotomatala ke he tau lekua tupu fakafofo:
Tau afi tolofia*



Ollie

KO E SAIENTISI

13 tau moui mai I Kalasiosi I Niu Silani. Iloilo a Ollie, houa, feua faofao tino mo e fiafia ke he totou e tau fetū mo e tau lagi mamao pihia mo e pelē lakapī.

*Lotomatala ke he tau lekua tupu fakafofo:
Tau Mafuike*



Ping

**TAGATA FAKAFETUI
MO E FALU**

12 tau moui mai I Hong Kong. Gahuahua e tau lima ha Ping, gutu talatala, makaka mo e fiafia ke tunukai mo Wushu.

*Lotomatala ke he tau lekua tupu fakafofo:
Fakapuke*



Eddy

ENESINIA

12 tau moui mai Bahia, Brazil. Fia iloa mena a Eddy, mahifi, nofo fiafia mo e fiafia ke he Lego mo e heke tau lapaholo.

Lotomatala ke he tau lekua tupu fakafofo: Malolo tau kaukau fonua/mouga



Vagahau fakamailoga (nakai fai leo)

Ha kua nakai logona mitaki e tau teliga ha Eddy, fakaaoga e COPE e Vagahau Brazil nakai fai leo LIBRAS. Kitia nakai e tau fakamailoga **mautali** ma e **tau mouga pā** mo e **samupiani?**

Kua eaea mai e laa he tau aolū ki Mouga Emei. Ko Tupuna Fu mo e Matakau COPE ha ne fiafia fakaotioti e tau aho toetoe he magahala Mateafu.



Rescue, fano ke tamai!

Uufu uufu!



Ollie, ko e e laia e hokotia a
koe ke he ola tokoluga ia!

87, 88, 89 ...

To taha e mitaki!

Ofoofogia e Aoga COPE he ahiahi mai tokoua e
tau pulotu Mouga Pa mai he
Aoga Pulotu Okosofoti, Pelitania.



O mai ma COPE, ke amaamanaki
ke tali ha tautolu a tau tagata
fenoga mai. Candy, tuku e tau
fiti ke he lupo tuku fiti.



Eddy, fano ke tao e keke palamu mo inu ti.
Ollie, fakamaopopo. Ping, fano ke tauteute e poko aoga.

E, Sifu



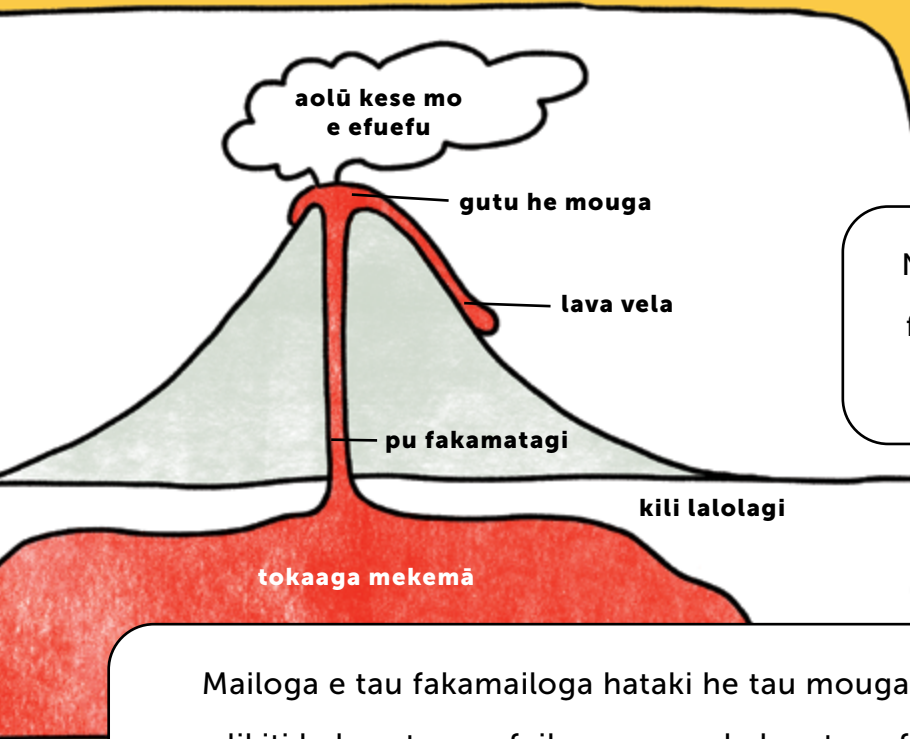
Ko e aho nai, to fakaako a tautolu e tau mena ke taute to pa e mouga ...
mo e onono fakamatafeiga ke he matapatu fekau:

**FANOGONOGO, MAUTALI,
TU TOKAGA**

Fakatali ke he tau fakailoaaga
hataki foou ke he mouga pā.

Tauteute e tau
kato mautali.





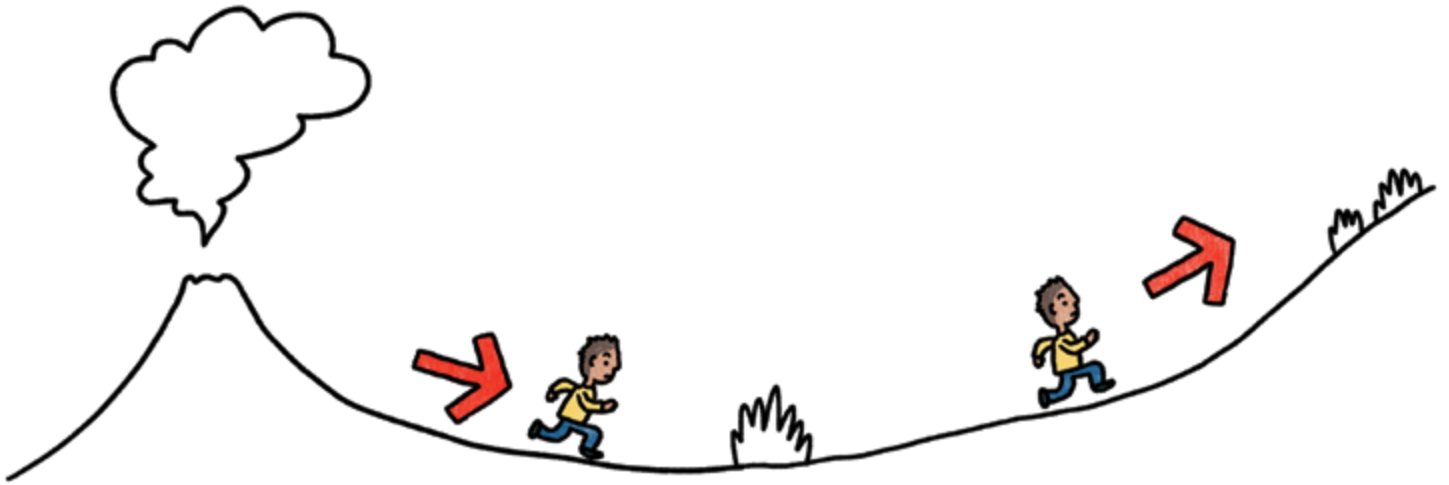
Nakai tatai mo e falu lekua tupu fakafo, kitia e tau fakamailoga he mouga pa to pa.

Mailoga e tau fakamailoga hataki he tau mouga pā: malikiti hake e tau mafuike mo e mokulu e tau efuefu, namu kese, mafana e tau vailele mo e tau vai i lalofonua, hiki e tau foliga he tau aolū, mo e tau leo galulu.



Taute taha
palana fehola
fakamafiti ma e magafaoa

MO E MAGAAHO KA PA E MOUGA?



Muitua ke he palana
fehola fakamafiti. Mafiti ke
fakamamao mo e mouga pā.

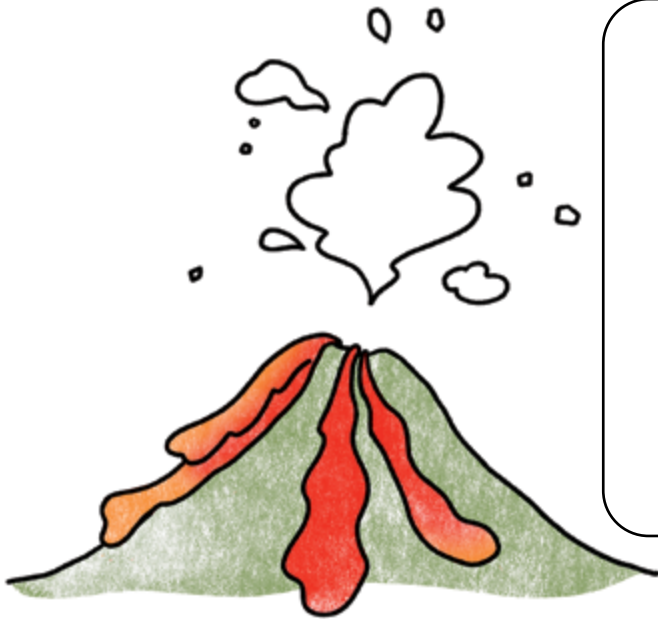
Lali ke fakamamao mai he
tau fonua mo e tau kaavaava
i lalo he mouga pa.



Onono ke kitia e tau efuefu mokulu mo e tau patuō, tau fio vai, efuefu, tau patuo mo e pelapela fa e tafe hifo he tau kaukau mouga, tau kese mouga pā mo e tau kese vela, tau efuefu mo e tau patuō ne tafe mafiti hifo he tau kaukau mouga.



Logotuki.



Iloa nakai e koe ko e **tau tafe pailokalesetiki** ko e tau fio vai, tau patuō vela paku, tau kese mo e tau efuefu? Ko e lahaa ko e **tau tafe kiva**, pelapela matolu fio vai, kelekele mo e tau valavala patuō tafe hifo he tau kaukau mouga tuga e vailele simeni.



KA E KUA E MOUGA PĀ?



Fanogonogo tumau
ke he tau takitaki. Liliu
ki kaina po ke kamata
fakameā ka milino.



Tui e *pa gutu, tuilima* mo e
tau pa mata ka fakameā
e tau efuefu mo e tau kiva.



Mitaki ha ia tau gahua ha COPE!
Fanogonogo.
Mautali. Tu Tokaga!



Papā e kaina haau ke ua
hoko mai e ea i fafo ki fale.





Fakapuloa atu e fekau.

Matakavi ke o ki ai ko
**MOUGA MELAPI,
INITONISIA**





Kua tamau nakai e tau pipi? ova!

O fai, ova!

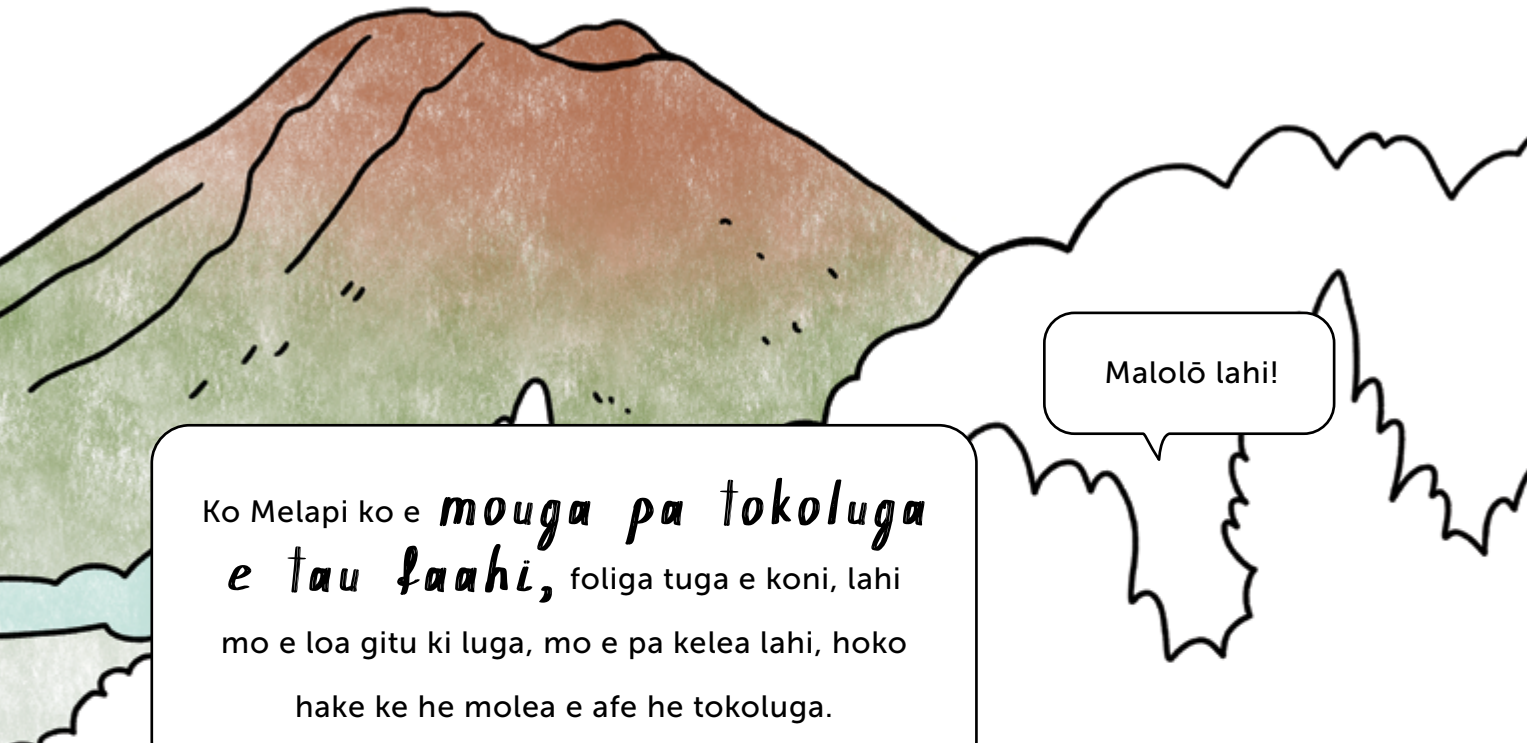
Uufu uufu!



Hohoko mafola a lautolu he taatu e Tupuna Fu tata atu
ki logiakata, ke he paipai mouga pa.

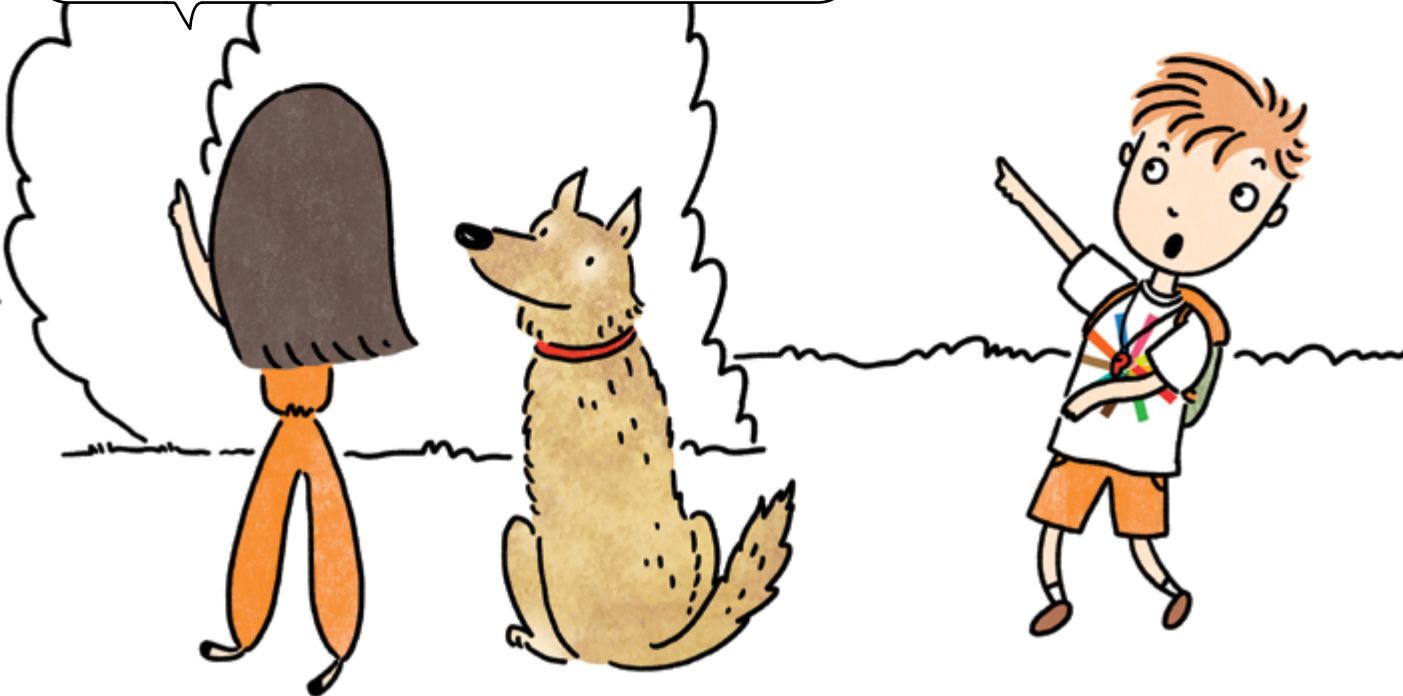
Brrrrrrr. Nakai manatu au to makalili kelea pihia.





Malolō lahi!

Ko Melapi ko e *mouga pa tokoluga*
e tau faahi, foliga tuga e koni, lahi
mo e loa gitu ki luga, mo e pa kelea lahi, hoko
hake ke he molea e afe he tokoluga.

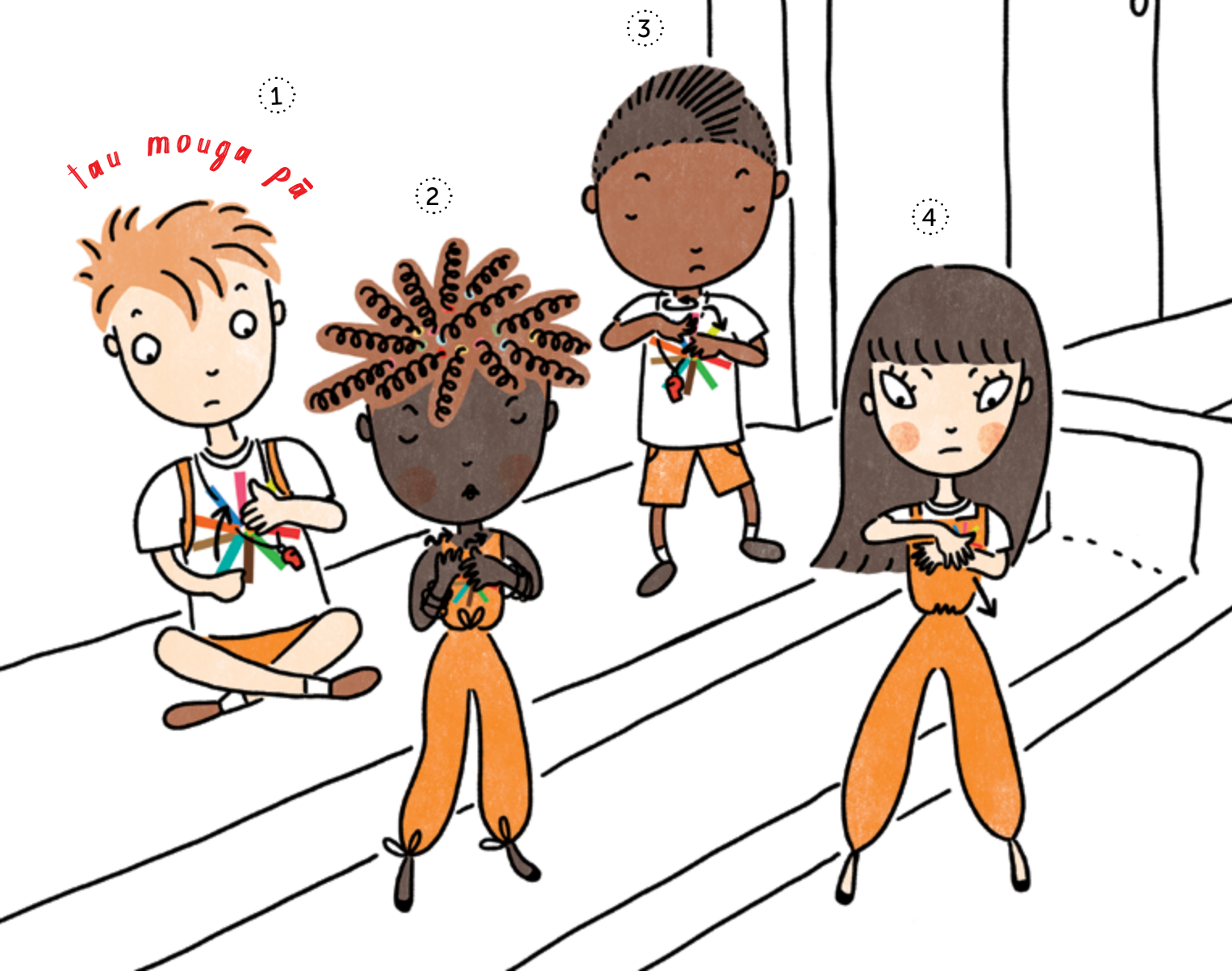


Feleveia a COPE mo e taha pulotu tiolotisi,

ne fakaako a lautolu hagaao ke he

Tau Fakailoaaga Hataki Mouga Pa ka Initonesia.

Ko e tuaga ha Melapi magaaho nai ko e Lanu Ago.



Kitia a Melapi ko e mouga fakataputapu, kaina ne nonofo ai e tau agaaga tuai.

Ko e leveki kaina mahuiga haana fakafetuiaga mo e mouga pā mo e maeke ke kitia

kua fai hikiaga tote e mahani he mouga.

AKTIF

Mitaki

WASPADA

Mautali

SIAGA

Fakatali

AWAS

O fakalaulau



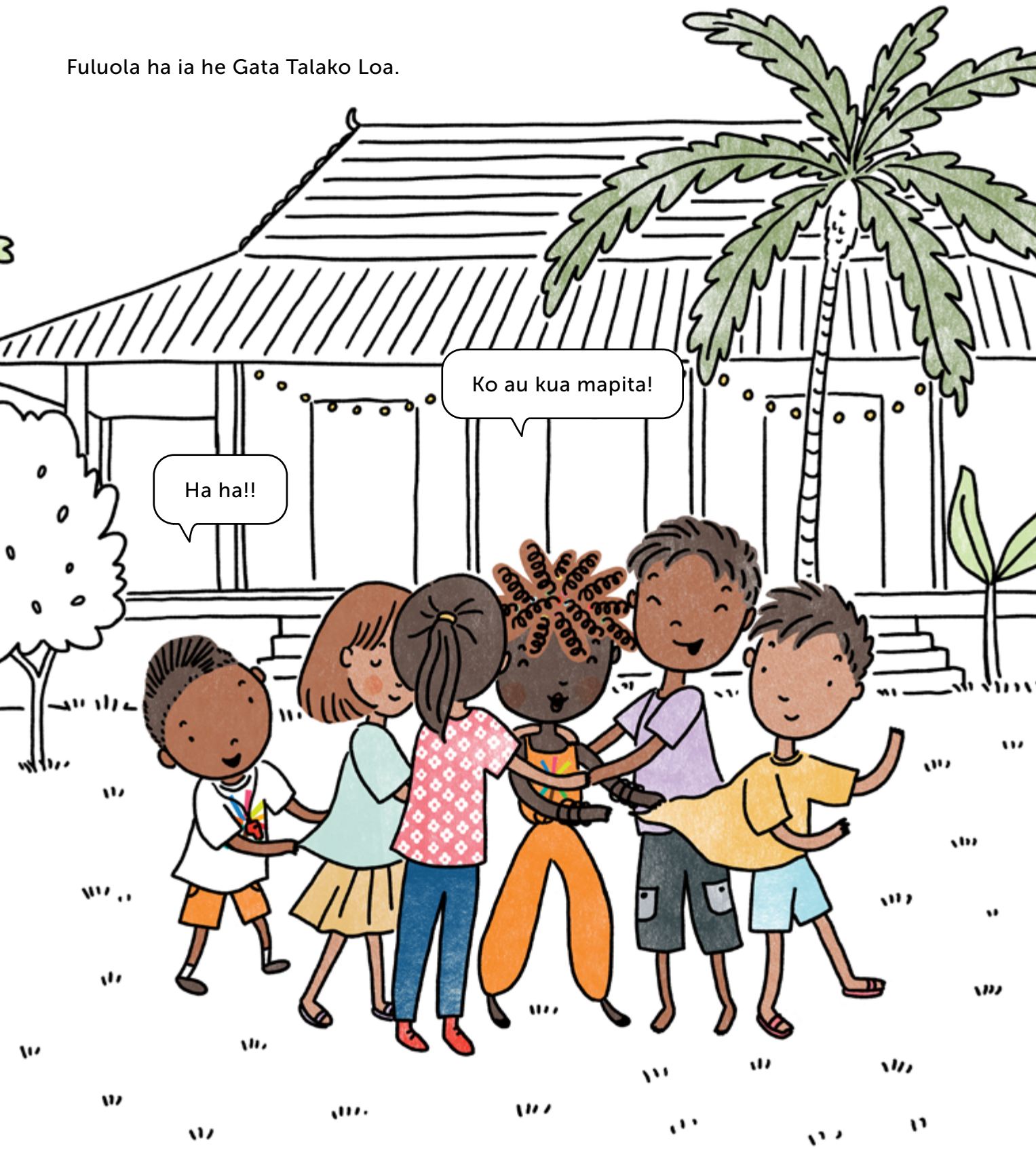
Nonofo a COPE he taha kaina.
Kua oti e tau mena ha lautolu he
fakatokatoka ha ne pelē Patuo, Pepa mo e Nifo.

Nifo!

Pepa, E mua a koe!



Fuluola ha ia he Gata Talako Loa.



Ha ha!!

Ko au kua mapita!

Pogipogi hake, kua tukufenoga tuai
a COPE, ahiahi atu ke he tau aoga ne
tututakai he motu.

Fakalofa atu, Selamata,
ko mautolu ko COPE!

Kua mau nakai a
mutolu ke ako hagai
ke he tau mouga pa?

Fanogonogo tumau ke he tau Takitaki.

Manatu e *tau fakamailoga hataki.*
Ko e kese salafā na namu po ke tau mataafi kua tugi.



Gahua ke he palana
fehola fakamafiti mo e
hau a magafaoa. Ua
nimo e tau manu fao!

Fakailoa atu ke he hau a tau
mamatua mo e tau kapitiga –
FANOONOONO,
MAUTALI. TU TOKAGA!



Fakaako e COPE e tau fanau ke fafao e
tau kato Mouga Pa mautali

Fakaaoga e tepi ke pili e tau
pu fakamaama ke ua hoko
mai e tau efuefu ki loto.



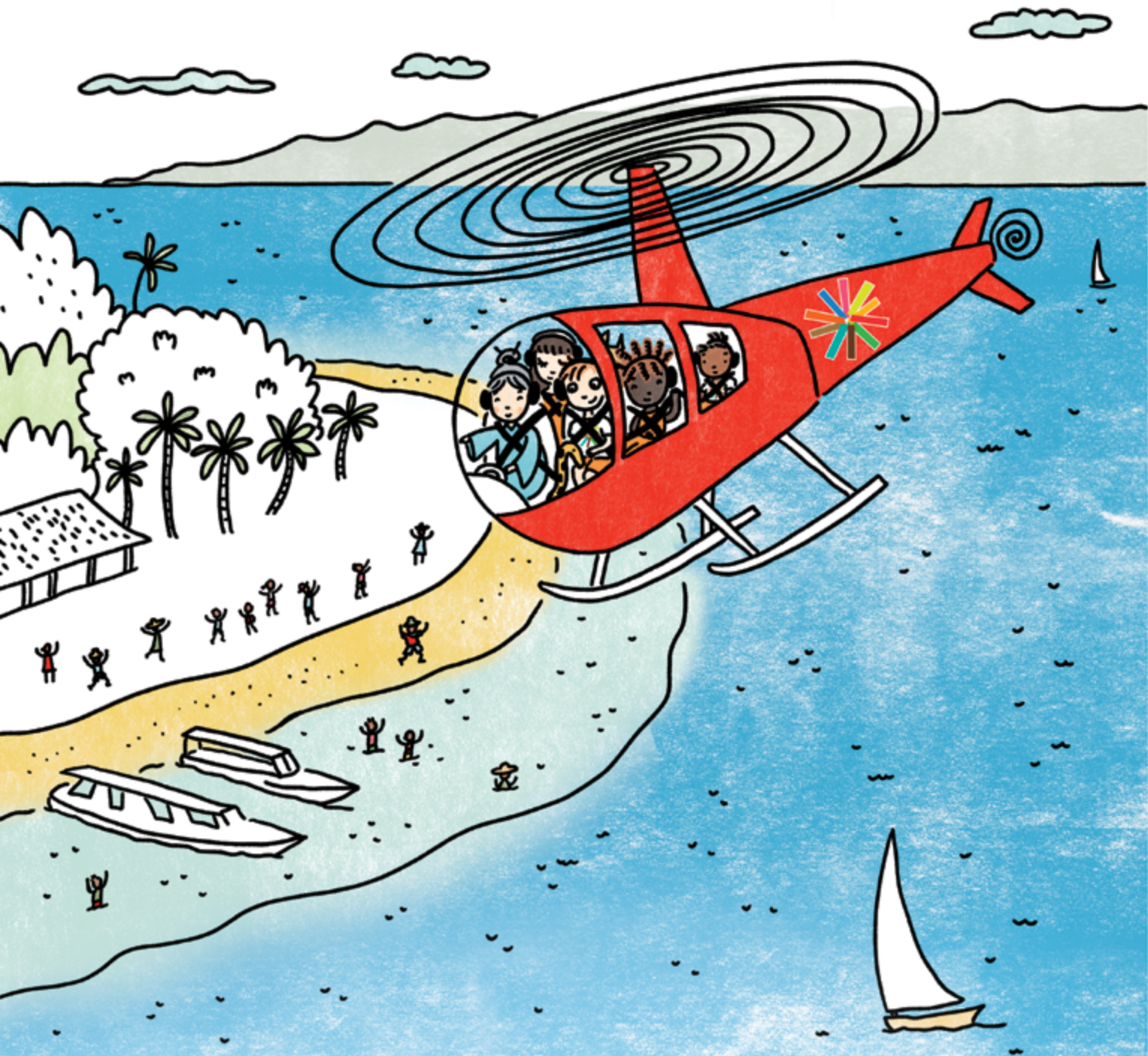
Feleveia a Eddy mo e taha tama ne teliga tuli. Tutala a laua fakaaoga he

Vagahau Fakamailoga Meleke.

Tu e kaina haaku ki fafo he matakavi fehola fakamafiti 3km ka e kitia mitaki a Melapi ka milino e matagi. Ka e tumau ni au ke mau e kato mautali, he neke ofo kua tupu e lekua.



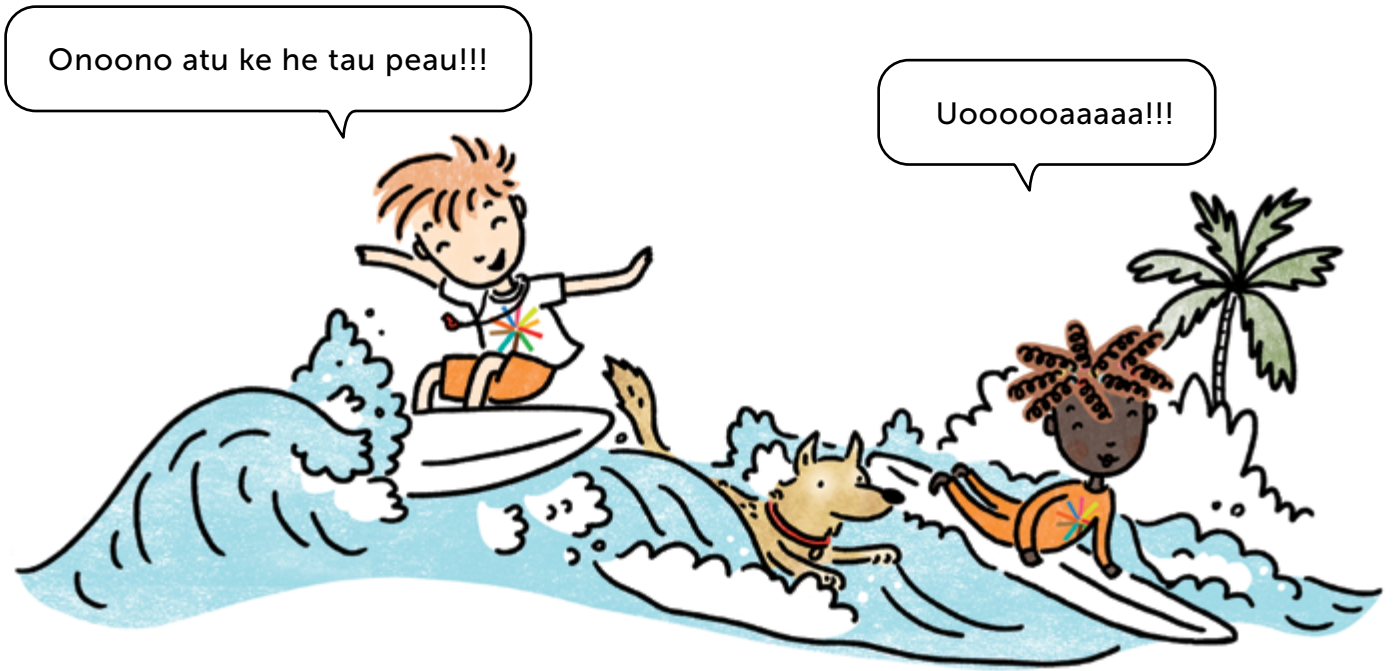
Ko e **Samupiani COPE** mooli a koe! To taha e mitaki.



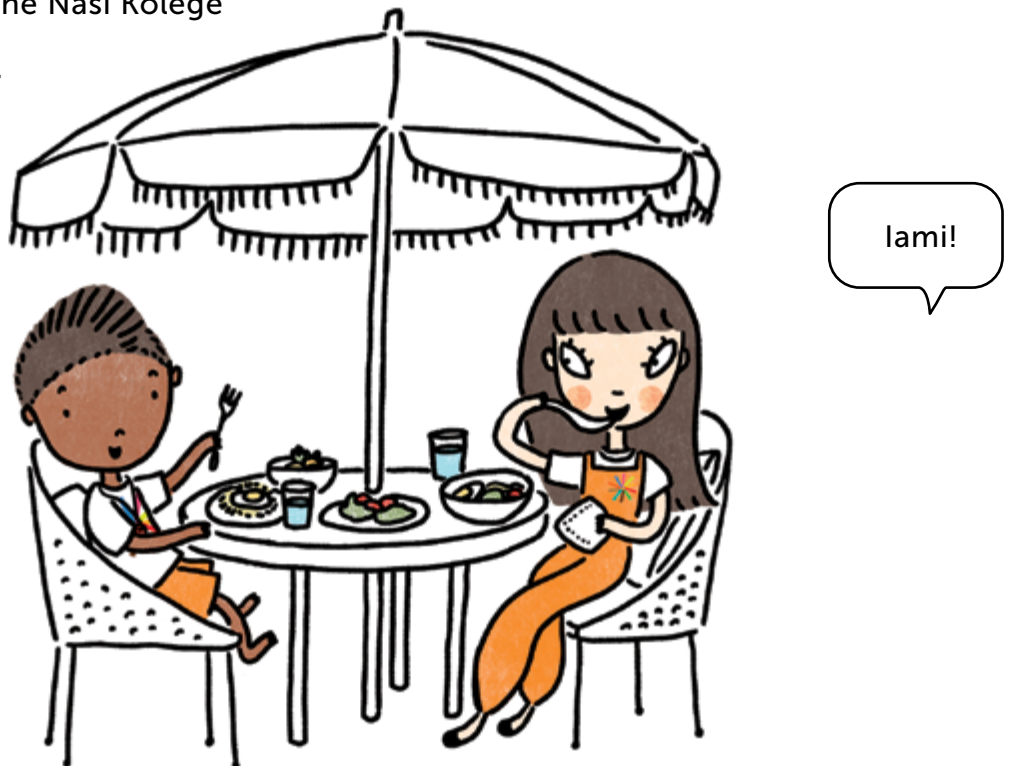
O atu a COPE ke he tau motu mo e taha motu ke fakapuloa he fekau-

FANOGONOGO, MAUTALI. TU TOKAGA!

Oatu foki a lautolu fakatū ke he mataafaga fulufuluola ko Bali.



Kai lolo a lautolu he Nasi Kolege mo e Soto Aiama.



Ki Melapi, kua maune hake e numela he

tau maŋuike ikiiki.

Kua hiki hake e fakailoaaga hataki ke he lanu fuamoli.

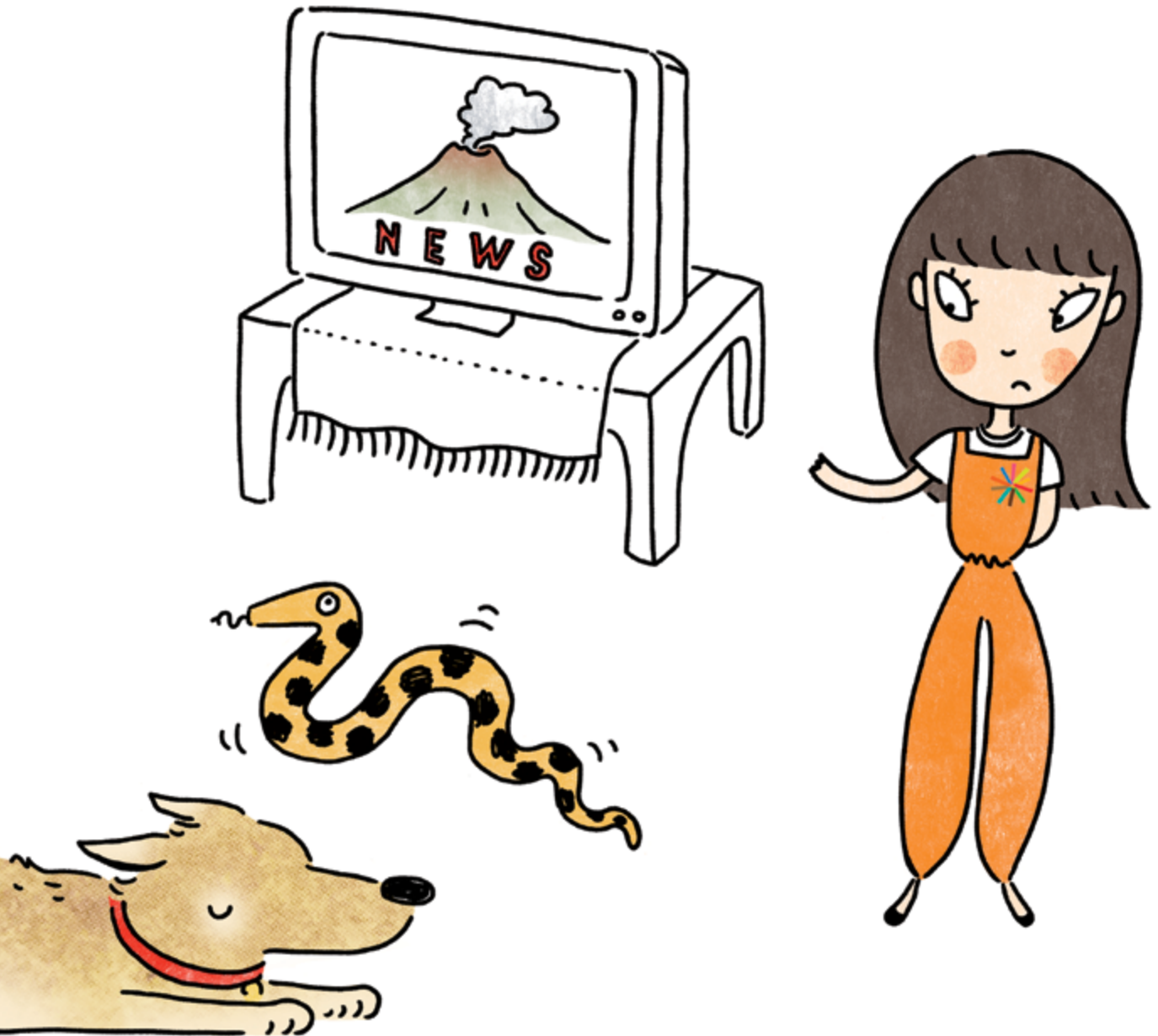
Haia oti e tau tagata ne fa e fanogonogo ke he tau vala tala.

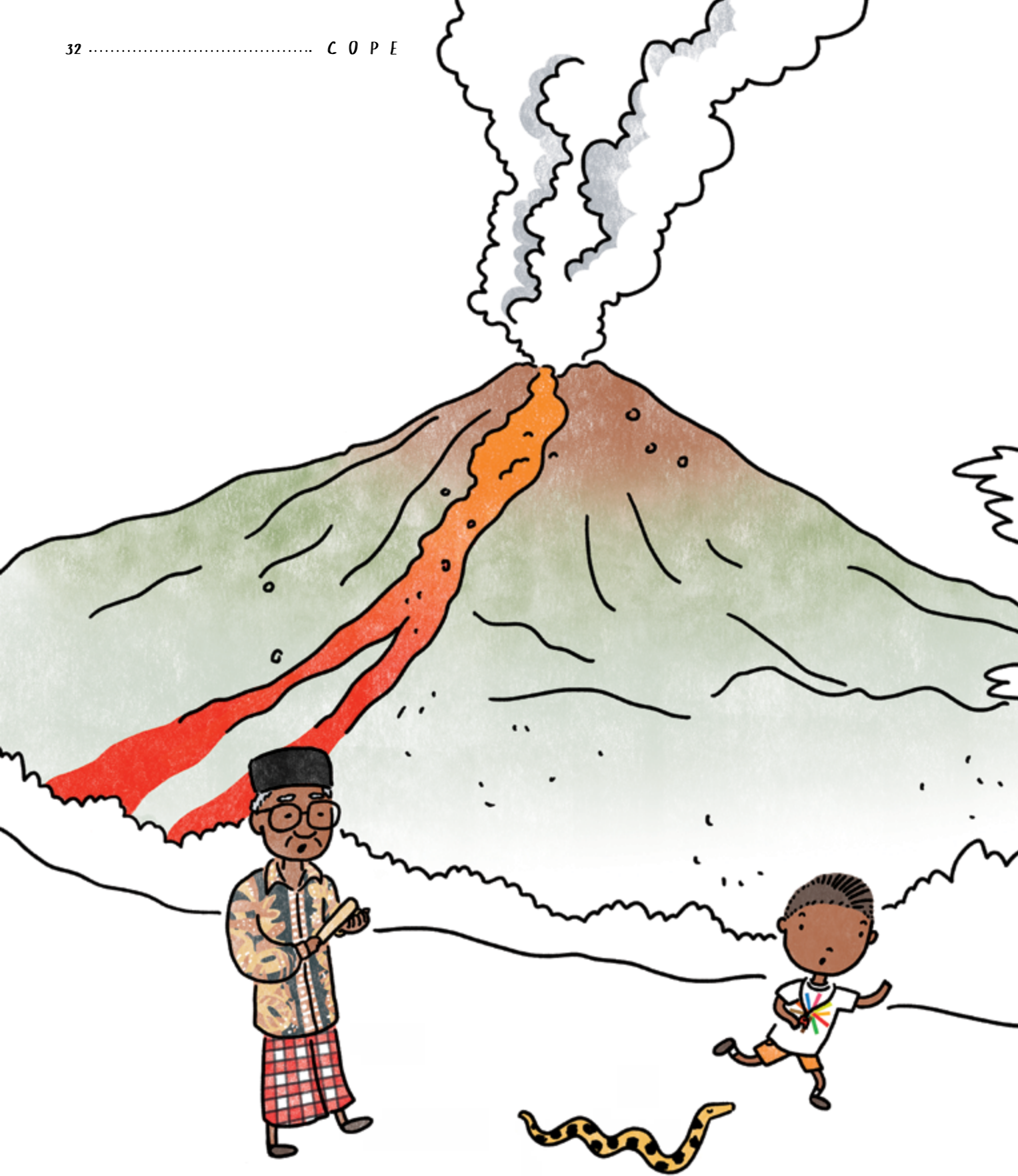
O mai ke mautali.



Teva a Sense he pale laa.

Lulu mo e gu lahi tuga e *pakū lagi*.





Kua pa e mouga Melapi, tau aolu vela mo e tau efuefu kua tokoluga ke he lagi. Tau poloka lava vela matolu ha ne tafe mai he gutugutu. Leo lahi e kelepa he tagi ke he tau maaga.



Taatu e COPE e *tau matakau tu hagahagakelea*

ke he tau kaina fakamalu fakakū.

Lukuluku e Ollie e muke fifine. O moi e Candy e tama taane he nofoa faihui.

Lagomatai a Eddy ke he tagata taane mo e haana pasikala afi.



Ha ne takitaki atu e Ping e fifine fatu he tau hala he maaga.

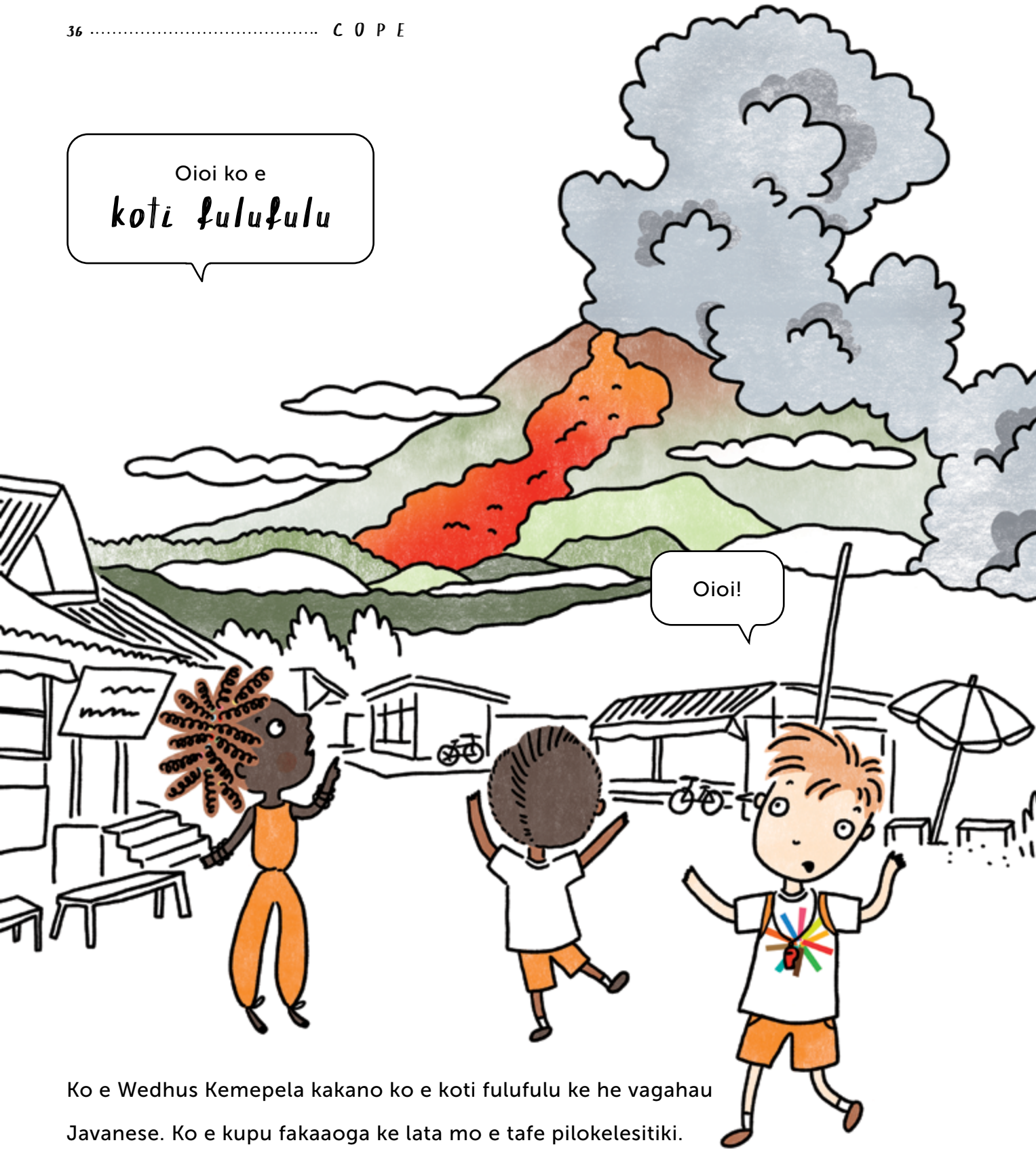
Leveki atu a Rescue he punua kulī ne tiaki. Fakamakamaka ni a COPE ke

NAKAI TIAKI HA TAGATA.

Fakaave, O mai ke o!



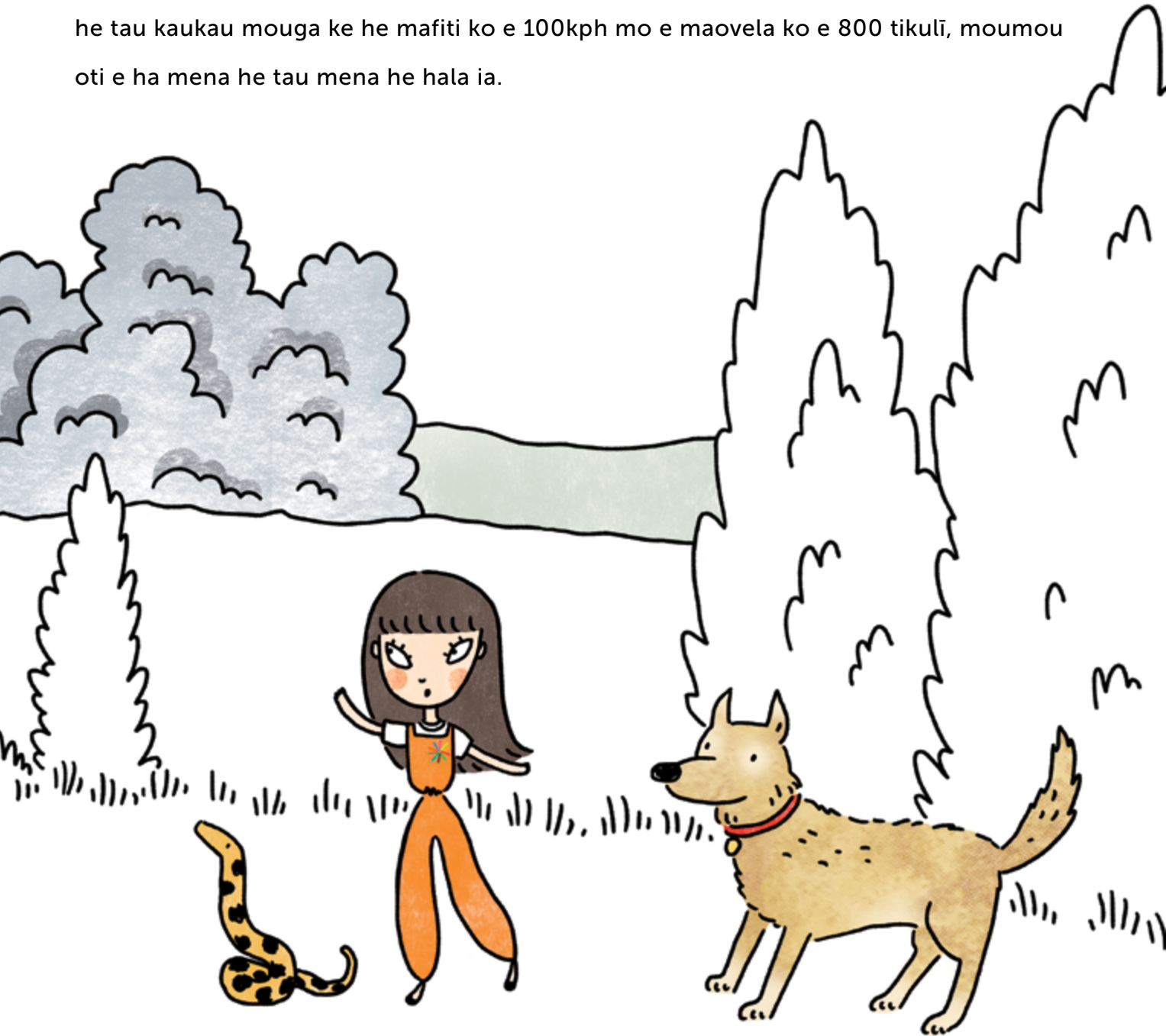
Oioi ko e
koti fulufulu



Oioi!

Ko e Wedhus Kemepela kakano ko e koti fulufulu ke he vagahau Javanese. Ko e kupu fakaaoaga ke lata mo e tafe pilokelesitiki.

Ko e tau efuefu vela kua tafe, tau poloka maka mouga pa mo e lava ha ne mokulu hifo ke he tau kaukau mouga ke he mafiti ko e 100kph mo e maovela ko e 800 tikulī, moumou oti e ha mena he tau mena he hala ia.



Tataka e tau aoga. Vela puhopuho e tau akau, tau faama mo e tau kaina.
Maluia e tau kaina he kafu efuefu tea.

Kua apiapi lahi e tau *fale la kaina tolo*.

Tote e fakavehā mo e falu.
Toka oti ni haku tau koloa
i kaina. Fia liu au ka e
hagahagakelea lahi.



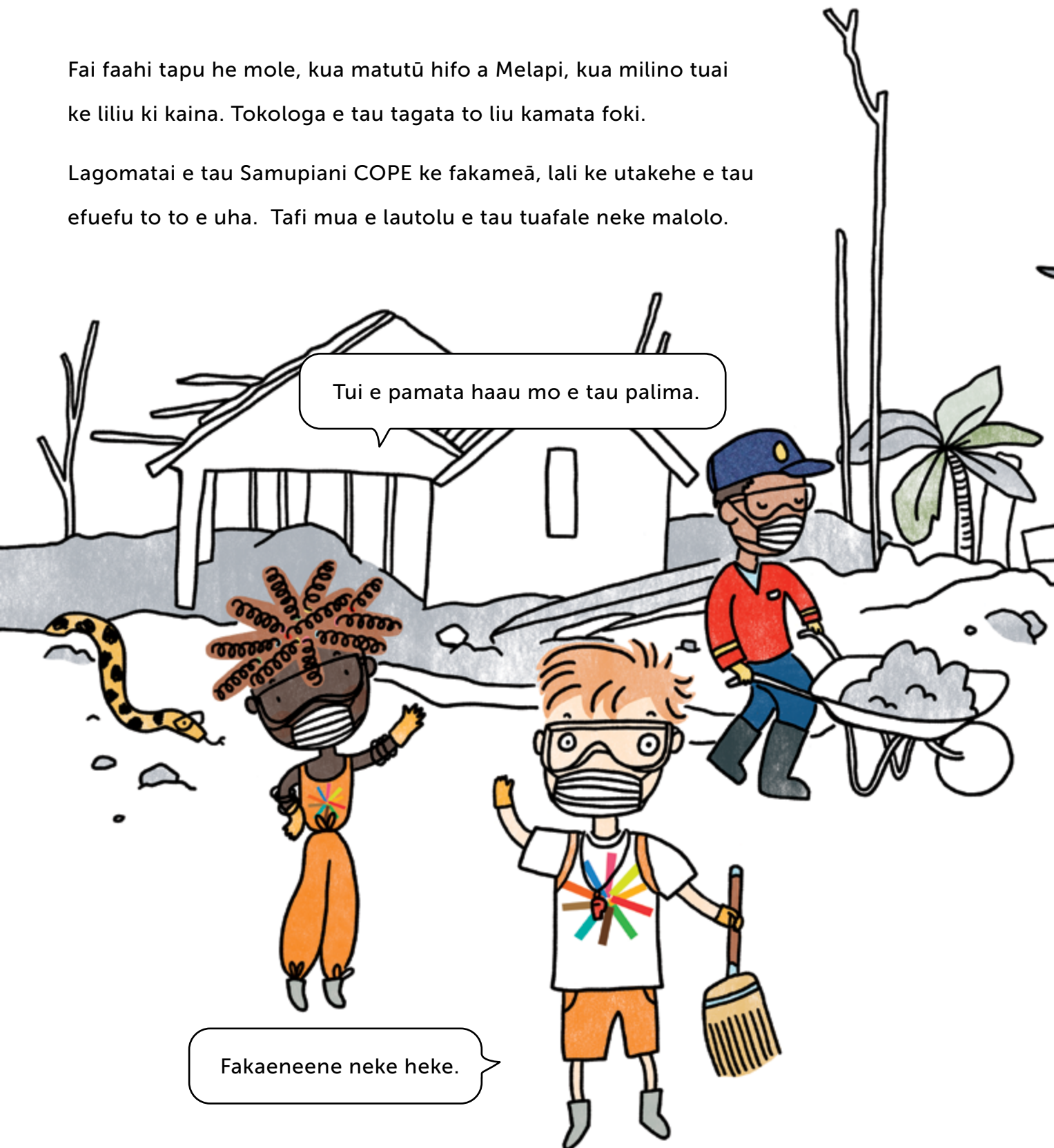
Manako au ke fano ke he faama haaku ke fagai haku tau povi. Ka e nakai moua ha motie meā mo e vai magalo ha ko e tau efuefu.



Ha ne tufa atu e COPE e tau kai, inu, tau pa mata, tau mamoe, mo e lali ke fakafiafia e tau tagata.

Fai faahi tapu he mole, kua matutū hifo a Melapi, kua milino tuai ke liliu ki kaina. Tokologa e tau tagata to liu kamata foki.

Lagomatai e tau Samupiani COPE ke fakameā, lali ke utakehe e tau efuefu to to e uha. Tafi mua e lautolu e tau tuafale neke malolo.



Tui e pamata haau mo e tau palima.

Fakaeneene neke heke.



Onono tumau neke
ʻai ʻakailoaga hataki lahaa.

Oti tuai nakai fai efuefu ne mokulu mai, tu e lava nakai tafe,
tokologa e tau manu kua liliu ki Melapi. Tau kufani mo e tau
moko tuamaō e kau fakamua ne liliu mai.

Fakaaoga e efuefu ko e fakatalumelie he kehekehe.



Liu e motie tuputupu.

Eeee!

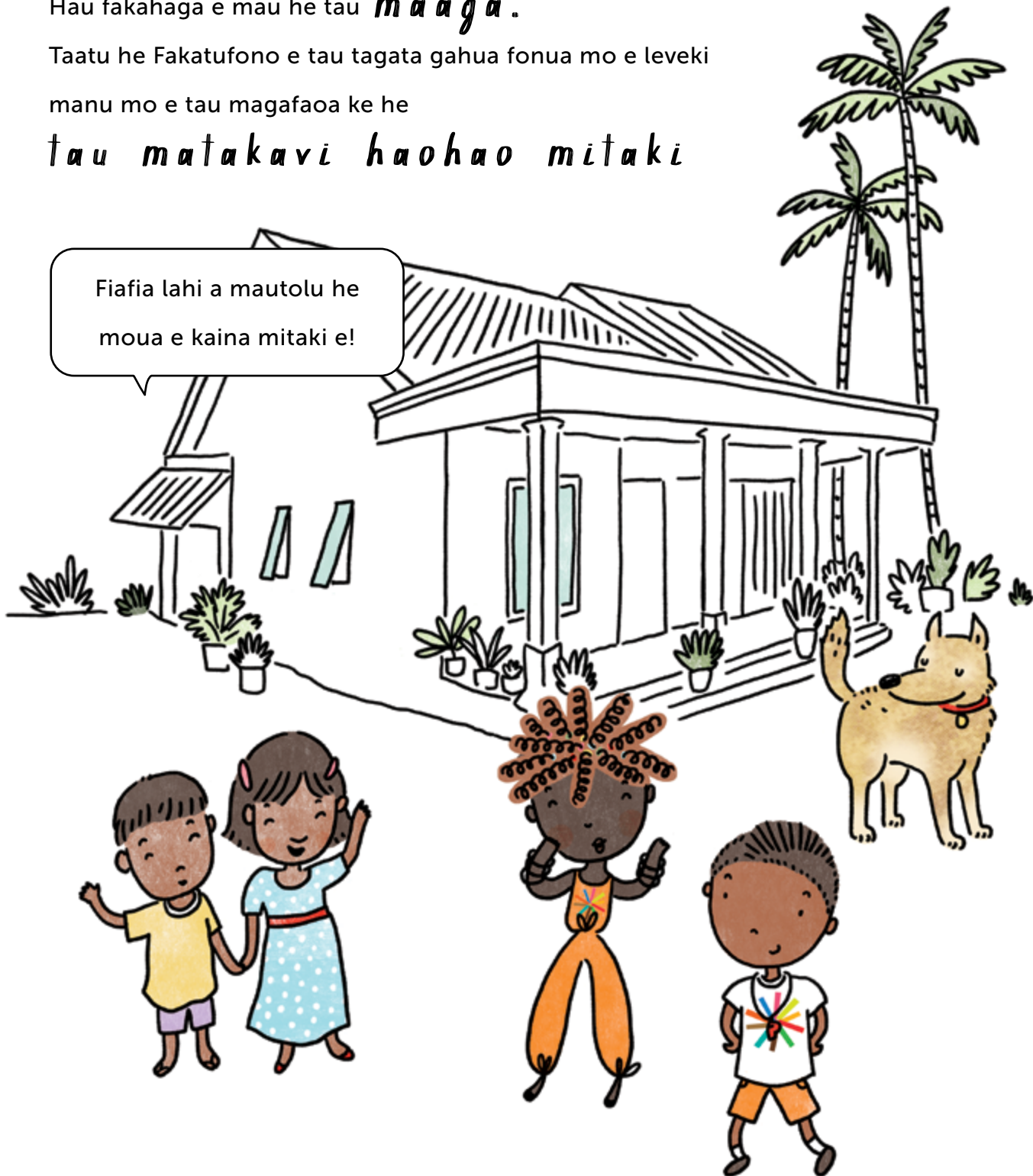


Hau fakahaga e mau he tau *maaga*.

Taatu he Fakatufono e tau tagata gahua fonua mo e leveki
manu mo e tau magafaoa ke he

tau matakavi haohao mitaki

Fiafia lahi a mautolu he
moua e kaina mitaki e!



Kua nonofo mau e tau povi
hinai mo e loga foki e motie.



Fiafia lahi a Tupuna Fu ke he haana matakau.

Kua fakakehe mooli e lautolu e tau momoui he tau tagata Melapi.

Fakaaue lahi, COPE!

Manatu tumau –
Fanogonogo, Mautali, Tu Tokaga!

Mutolu kia!





Hohoko tei a tautolu ma COPE, ova.

Loa lahi e gahua nei, hoko mai foki e
magahala makalili ki Moua Emei.
Manako lahi a COPE ke ta e tagata sinō.



L A U T O L U N E F A I L A G O M A T A I K E H E C O P E



*Martha
Keswick*

COPE

TAGATA TOHIA

Ko Martha Keswick ko ia ne tohia e tala tu fakaholo mo e fakaliiuaga Max mo Mei ma e tau pepa fakatino, ko e tau veveheaga tala hagamoa ia kia Zhonghuo Mingren ke he tau tagata mahuiga ma e motu ko Saina kua fakakite ke he tau puhala fakakitekite ko e komiki ma e pepa Pangu. Ko e gahua ha Martha ke lata mo e Keswick Foundation ke lagomatai ke he matagahua lekua tupu fakafo i Saina.

Nofo a Martha i Hong Kong mo e haana taane mo e tau fanau toko fa mo e ua e kuli.



*Mariko
Jesse*

COPE

**TAGATA TA
FAKATINO**

Ko Mariko Jesse ne fakaako he Aoga Central St Martin's ti hokotia foki a ia ko e taha Pulotu Faiaoga. Ko ia ko e pulotu ta fakatino ma e tau pepa ti gahua foki a ia ke he loga e tau fakaholoaga kehekehe he lalolagi mai he tau pepa fakatino ti hoko ke he talaga he tau koloa tuga e tau polu maka.

Nofo a Mariko i San Francisco ti mautali tumau a ia he tau magaaho oti neke to e tau mafuike.



*Timothy
Sim*

COPE

TAGATA FAKATONUTONU

Ko Dr Timothy Sim kamata gahua ia ko e lagomatai ma e tau momoui tagata, fakamahino ke he lagomatai ma e tau magafaoa. Ko e tau 2008 gahua fakamahino ni a Tim ke tukutuku hifo e tau lekua tupu fakafo he oti e gahua mo e tau fanau, tau magafaoa, tau aoga, tau maaga ne lauia he mafuike Wenchuan he tau 2008. Tohia e ia loga e tau pepa ke he vagahau Saina mo e Peritania.

Ko Tim, ko e tuipulotu ke he aoga Singapore University of Social Sciences.



Ko e pepa Mouga Pa ha COPE ko e pepa aoga lahi mo e koloa kua fakatonutonu fakasaienitisi ke fakaako aki e tau fanau pihia mo e tau maaga tu hagahagakelea ke he puhala mautali mo e paleko atu ke he tau mouga pa.

– **DR JOHAN STANDER**
Director of Services Department,
World Meteorological Organization

Ko e tau fakatino fuluola mo e mukamuka e tohiaaga he pepa kua maeke ke totou he tau fanau ne nonofo po ke nonofo tata atu ke he tau mouga pa ke fakaako e lautolu e tau mena ke mautali ki ai mo e tau mena ke taute kaeke ke pa e mouga.

– **PROFESSOR TAMSIN MATHER**
Department of Earth Sciences, University of Oxford

Ko e tau pepa mukamuka nai, moua vave, alaala ke totou mo e lagomatai e tau fanau ke maama mo e mautali ma e tau lekua fakatufugatia.

– **PROFESSOR DAVID PYLE**
Department of Earth Sciences, University of Oxford

Ko e pepa COPE hagamoo ke he tau mouga pa ko e taha koloa mahuiga ke fakalagalaga aki e tau iloamena he tau fanau mo e maeke ia lautolu ko e tau eisini ke he hikiaga ma e tau mautali tau lekua tupu fakaofu mo e mahani tu tokaga.

– **MR MARCO TOSCANO - RIVALTA**
Chief, UNDRR Regional office for Asia and the Pacific

Ko e pepa COPE hagamoo ke he tau mouga pa kua fakakite e tau hataki ke mailoga tuai, paleko atu mo e liu kehe tuaga ke he puhala kua maeke he tau fanau ke maama.

– **SONIKA POUDEL**
Sendai Stakeholders Children and Youth Group
Major Group for Children and Youth

Aoga COPE ke he maaga Sichuan.

I lalo hifo he Takitaki Tupuna ko Fu, akomena a COPE ke he tau fakaakoaga lekua tupu fakaofo mo e tau puhala mautali. Kau auloa ke he tau fenoga Mouga Pa ha lautolu i.

Mo e fakakite ha lautolu a tau makaka ke he tau puhala paleko atu ke he tau lekua tupu fakaofo.



www.cope-disaster-champions.com

  COPEdisasterchampions

TAU MATAULU COPE

- Tau Mafuike
- Tau Peau Tolotua
- Uha Lolo & To Fakapuke
- Afā
- Tau Lokauta
- Malolo e Kelekele
- Tau Afi Tolofia
- To Laa
- Tau Mouga Pā**
- Tau Peau Vela
- Tau Uha Tuli
- Malolo Kaukau Mouga



Fakakehe a.

Mautali mo e Tu Tokaga Mau!