



COPE

.....
Mautali ma e tau lekuā tupu fakafofo.
.....



PEAU TOLO TUA

Tohia e Martha Keswick +

Mariko Jesse + Timothy Sim

*Ko e heigoa e tau lekua fakatufugatia...
mo e tau lekua tupu fakaofo?*

Ko e tau malolō fakatufugatia ne tupu ka e nakai fai iloaaga mo e tupu ke he lalolagi katoa, tuga e tau mafuike, tau peau tolotua, tau fakapuke, malona e tau kaukau fonua, tau kaukau mouga, tau afā (mo e falu matagi malolō), loka uta, tau peau maovela, tau afi tolofia, to laā mo e mouga pā. Ko e magaaho ka paleko mai e tau lekua fakatufugatia nai ke he tau tagata po ke takatakaimotu, to maeke ke hoko atu ke he **tau lekua tupu fakaofo** mo e moumou e tau maaga nonofo tagata.

Ko e heigoa e peau tolotua?

Ko e peau tolotua, kakano ko e peau uaafo faka lapana, ko e peau moana makiaka po ke loga e tau peau fakalagā he tau mafuike he toka po ke malolo e tau kelekele I lalo he tahi po ke mouga pā. Ko e tau peau nai maeke ke hoko hake ke he 970kmh, e mafiti tuga e vakalele mo e loa he peau ko e 1000km. Ko e peau tolo tua ko e hoko hake ke he 40 mita tokoluga ti ka fafati mai ke he motu, kua lahi e puke tahi ne moumou e tau kaina nonofo, tau kaina to kai mo e mamate foki e tau tagata.

*To fakaaako atu e COPE a koe ke
mautali ke he tau peau tolo tua!*







Mautali ma e tau lekua tupu fakaofu – Peau Tolo Tua

Nakai maeke ke tohia mo e nakai fai tonuhia.

© 2024 Martha Keswick, Mariko Jesse & Timothy Sim

Nakai maeke ha vala ke liu lolomi.

TOHIA Martha Keswick

TA FAKATINO Mariko Jesse

FAKATONUTONU Timothy Sim

FAKAMANAIA E PEPA Reita Wong

TAKITAKI HE MATAGAHUA Christine Messervy

MARKETING MANAGER Lina Suarez

MATAKAU TALAGA PPP Company Limited, Hong Kong, China

www.cope-disaster-champions.com

  COPEdisasterchampions

Kua fiafia lahi mo e Oue Tulu Tulou ki a Mrs. Birtha Lisimoni-Togahai ke he fakaliliuaga mahuiga he tohi nei. Fakaaue foki kia Mrs Rossylynn Pulehetoa-Mitiepo ha kua lagomatai e fakakatoatoaaga he fakaliliuaga.

Kua maeke ke moua laulahi he tau ohi Niue oti ma è maamaaga malutia mo e fetuiaga laulahi.

Tau Fakaaue Lahi ki a:

COPE PEAU TOLO TUA TAU MATUTAKIAGA



GOVERNMENT OF NIUE



SPREP
Secretariat of the Pacific Regional Environment Programme



unicef
for every child

East Asia and Pacific Regional Office



香港天文台
HONG KONG OBSERVATORY





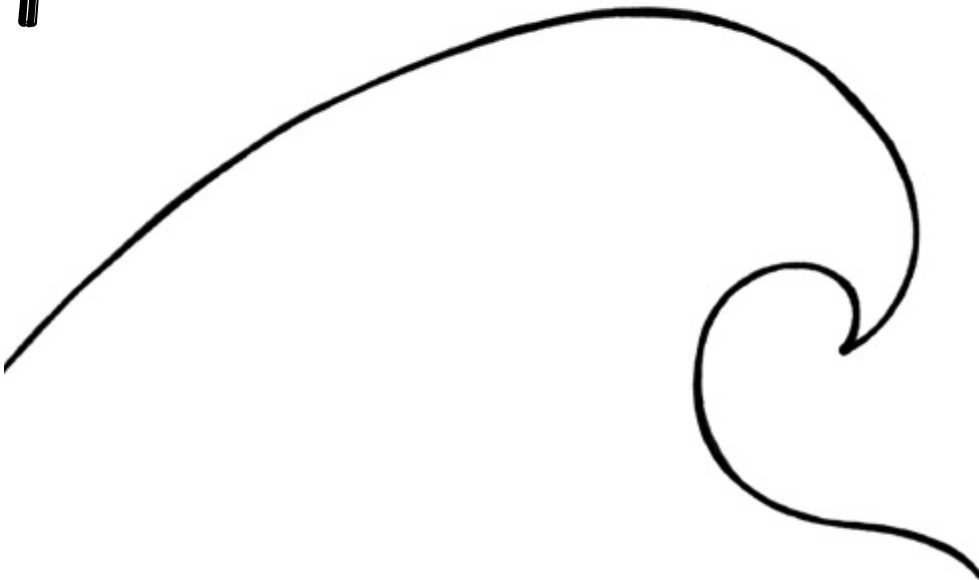
COPE

.....
Mautali ma e tau lekua tupu fakaofu.
.....

PEAU TOLO TUA

Tohia e Martha Keswick +

Mariko Jesse + Timothy Sim



*Ko hai e
Takitaki Tupuna ko Fu?*

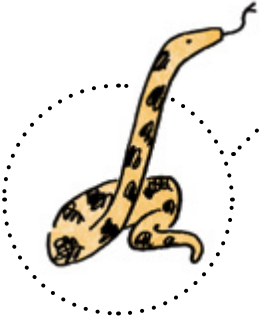
Ko e faiaoga latau kung fu ko ia foki ne fakatu e Aoga Mouga Emei Wushu, taha higoa foki haana ko Shifu, ko ia malolō e moui akonaki mo e kafilo foki ka e lahi mahaki haana atefua. Fetamakina a ia kua mate he magaaho ne malolo e aoga he to e mafuike Wenchuan he mahina Me 2008 ti tali mai kua foaki haana moui ke fakamatutūhifo e tau malona ha ko e tau lekua tupu fakafofo.



*Ko e heigoa e
Matakau COPE?*



Ko e matakau he lalolagi ne paleko atu ke he tau lekua tupu fakafofo, galo atu ki loto he maaga ko Sichuan ne tamata he Takitaki Tupuna ko Fu. Ko e Matakau COPE – ko Candy, Ollie, Ping mo Eddy ko e tau fanau fuata nakai fai mamatua kua tamai a lautolu he tau kaina leveki ke nonofo ke he Aoga COPE mo e fakaako ke he tau puhala ke tukutukuhifo e tau malona mai he tau lekua tupu fakafofo.



Sense
KO E GATA

Ko e gata fulufuluola 25 e tau. Moua e ia e lotomatala ke talaiki e tau lekua tupu fakafofo. Fagai aki he Takitaki Tupuna ko Fu e tau punua kumā a ia he tau mahina oti.

Rescue
KO E MANU KULI

Ko e kulī Kunming lahi mahaki, 8 tau. Makaka lahi a Rescue he kumi e tau tagata kua galo. Fiafia foki a ia ke poki lago.



Ko e Matakau C O P E



Candy

**KO E TAMA
FIFINE LEVEKI
ATU KE HE FALU**

12 tau tau moui mai he maaga ko Kranshoek I Afelika Toga. Ko Candy, malolō, alaala mo e fiafia ke ta e tau palau mo e koli hula hupi. Ko e gahua haana ke leveki atu ke he tau matakau ne tu hagahagakelea e tau momoui lagā mai ha ko e tau lekua tupu fakaofu tuga e tau fanau ikiiki, tau momotua mo lautolu ne tino lololele.

*Lotomatala ke he tau lekua tupu fakaofu:
Tau afi tolofia*

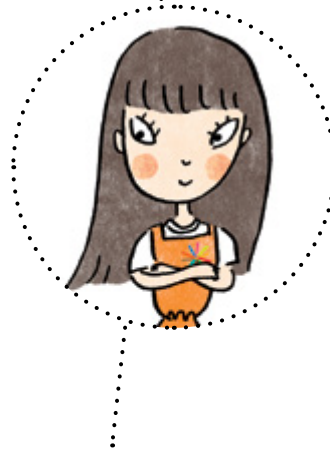


Ollie

KO E SAIENTISI

13 tau moui mai I Kalasiosi I Niu Silani. Iloilo a Ollie, houa, feua faofao tino mo e fiafia ke he totou e tau fetū mo e tau lagi mamao pihia mo e pelē lakapī.

*Lotomatala ke he tau lekua tupu fakaofu:
Tau Mafuike*



Ping

THE NETWORKER

12 years old from Hong Kong, China. Ping is practical, chatty, creative and loves cooking and Wushu. Ping is the networker and spokesperson within the COPE squad.

*Disaster Experience:
Floods*



Eddy

ENESINIA

12 tau moui mai Bahia, Brazil. Fia iloa mena a Eddy, mahifi, nofo fiafia mo e fiafia ke he Lego mo e heke tau lapaholo.

Lotomatala ke he tau lekua tupu fakaofu: Malolo tau kaukau fonua/mouga



Vagahau Fakamailoga (nakai fai leo)

Ha kua nakai logona mitaki e tau teliga ha Eddy, fakaaoga e COPE e Vagahau Brazil nakai fai leo LIBRAS. Maeke nakai ke kitia e tau fakamailoga ke lata mo e **lekua, Peau Tolo Tua** mo e **mautali?**

Ko e hifo he laa he vahā makalili i Mouga Emei kua molea e fulufuluola.

Ha ne onoono atu e Matakau COPE ke he patu lagi kula mo e tahi aolū matolu.

Ko e tau aolū kua tuga e tau peau!

Fulufuluola ha ia!



Ko Tupuna Fu mo Sense kua
oti e faofao Tai Chi ha laua
he magaaho afiafi, ha ne
liliu atu ki fale ke he Aoga
COPE neke makalili.

Tama mitaki, Rescue!

Uufu uufu.

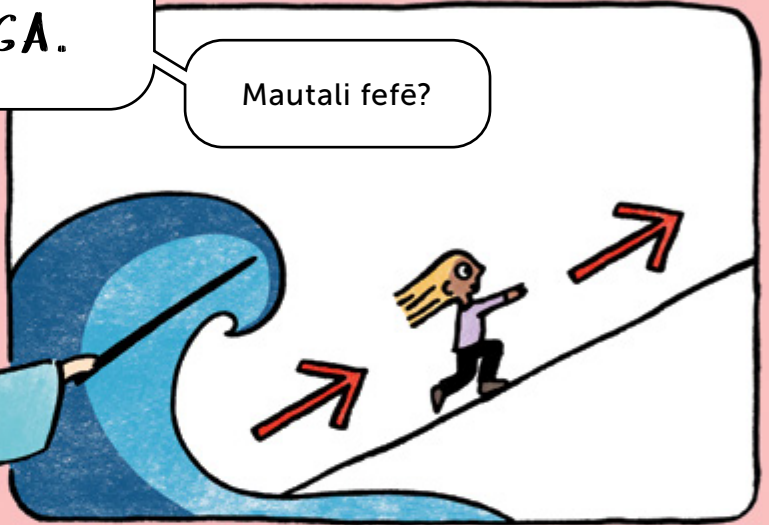


Pogipogi hake, kua kamata gahua. Ha ne fa e teuteu a Tupuna Fu ia COPE ke o he gahua foou Peau tolotua ki lapana.

Manatu ma COPE, ko e matapatu fekau –

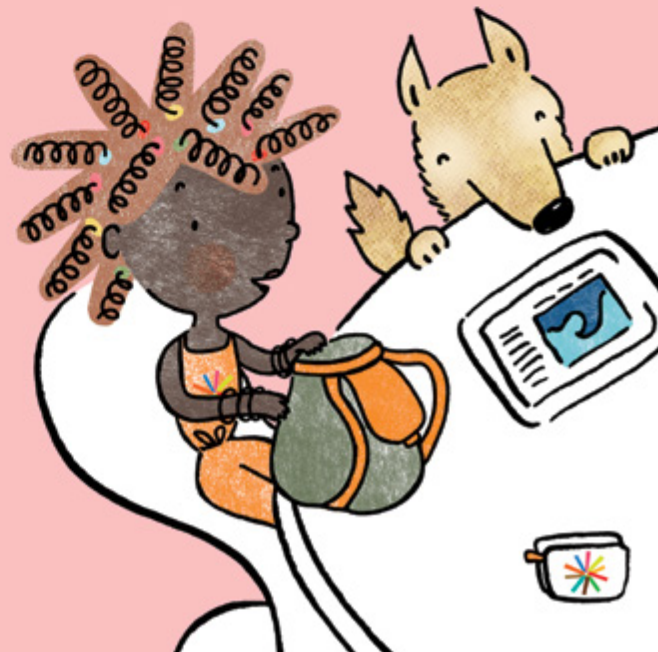
**O HAKE KE HE
MATAKAVI TOKOLUGA.**

Mautali fefē?



Fafao e **kato mautali.**

Taute taha palana mo e laupepa fakamau higoa he magafaoa mo e tau telefoni.



Palana e
hala ke fehola ki ai.

Fakaako tuai to hoko.

Tu tokaga, mataala. Vivilo e tau
letio ke moua e tau
*ʔakailoaaga hataki
peau tolotua.*

Kumi e
ʔakamalu maualii
ne tata mai ke he kaina mo e aoga



Iloa fefē e tautolu

KO E PEAU TOLOTUA HA NE HAU?



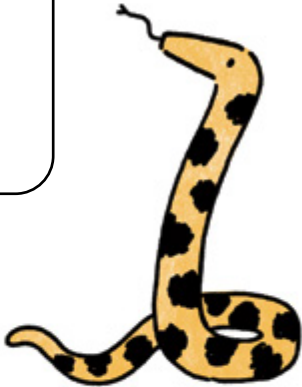
Ko e **MAFUIKE** malolō, kaeke ke molea 10 sikone po ke molea he lulu e fonua.



Liu atu mafiti e tahi ki moana,
tuga kua maha e tahi ka e mafiti lahi. Magaaho ia ka liu e tahi
ki moana, kua maiteite noa e toka (oneone, ika, feo).



*Gu lahi mahaki
e moana,
tuga e gu he tuleni.*



*Kehe e tahi, tuga ifo
mo e punapuna e vai.*



Ko e heigoa ha tautolu ke taute ka
HOKO MAI E PEAU TOLOTUA?



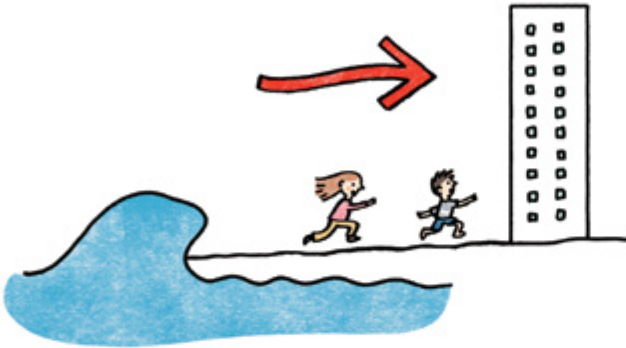
Ka to e mafuike,
LALO, FAKAMALU & TAPIKI!



Ka mole atu e galulu,
mafiti ke o atu ke
he **MATAKAVI
TOKOLUGA...**
po ke *taha fale*
tokoluga, tokoluga atu
he tau fale fata 10.

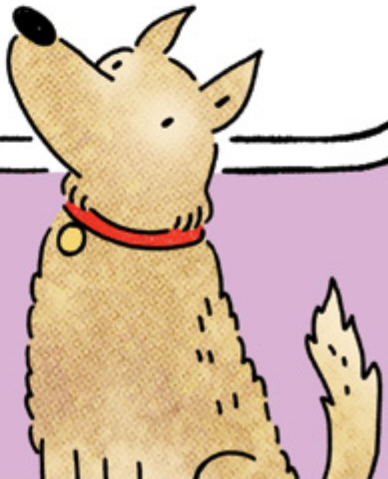


Nonofo ke he matakavi tokoluga po ke i loto he motu. Nakai lahi mahaki e peau fakamua. Ka e matutaki ke fai magaaho.



Aua neke liliu tuai ke he tau kaina a to moua e fakailoaaga *kua milino mo e maʻola.*

Ke he lau kelekele tatai, fakamafiti ke **O ATU KI LOTO HE MOTU,** mamao atu mo e kaukau tahi; malolō lahi e tau peau tolotua mo e loa, falu magaaho hoko atu ke he 10 e kilomita he loa.



Lahi e gahua ha COPE kua o atu ke he tau matakavi kehekehe i lapana.

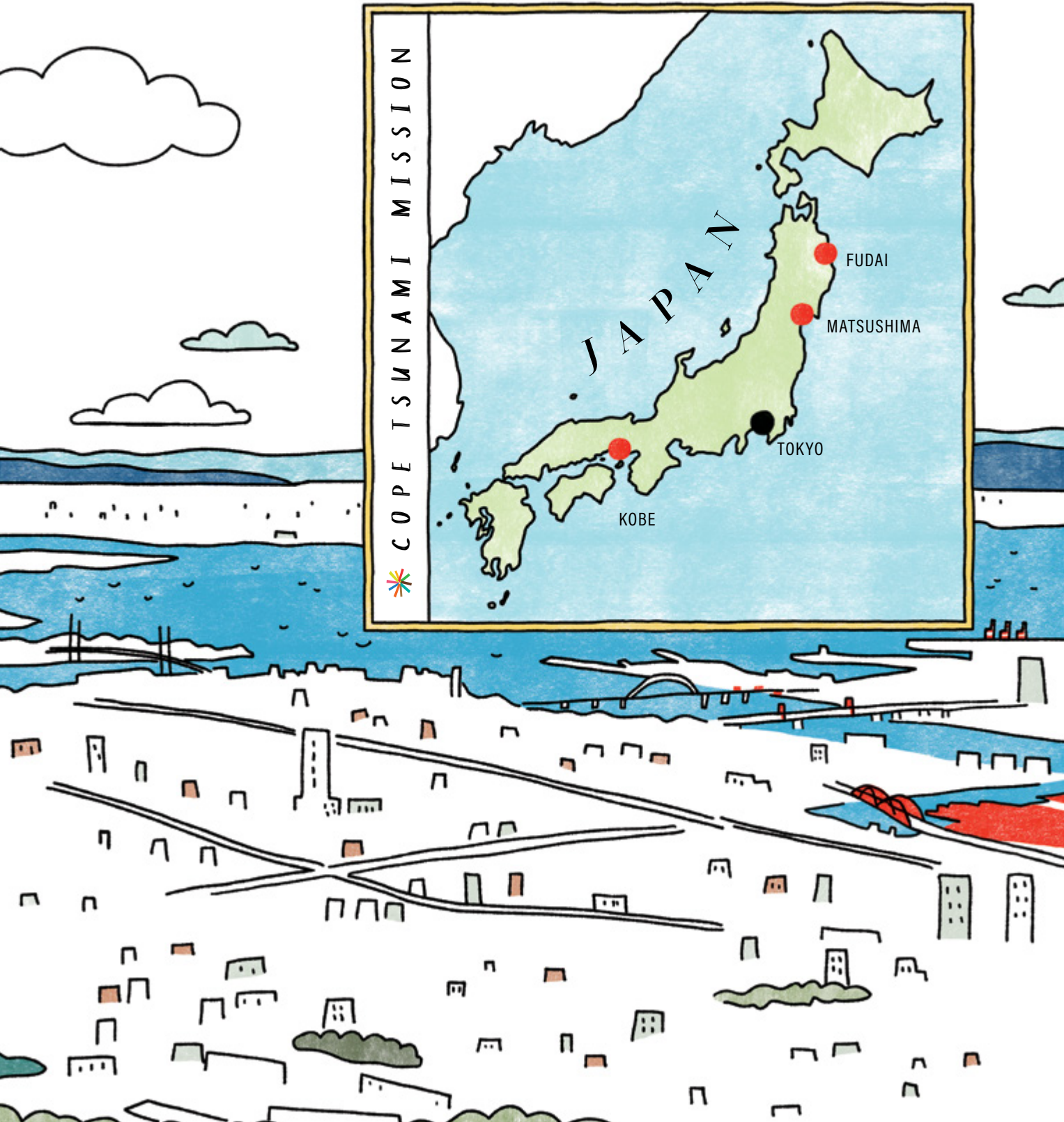
Ko e tu fakamua ko Kope i Hioko, taha matakavi mahuiga ke he

matagahua Tukutuku hifo tau Lekua Tupu Fakaoto.



Kua mau nakai kua
hohoko tuai, ova?

Mau tumau, Sifu, ova!



COPE TSUNAMI MISSION

JAPAN

KOBE

TOKYO

FUDAI

MATSUSHIMA

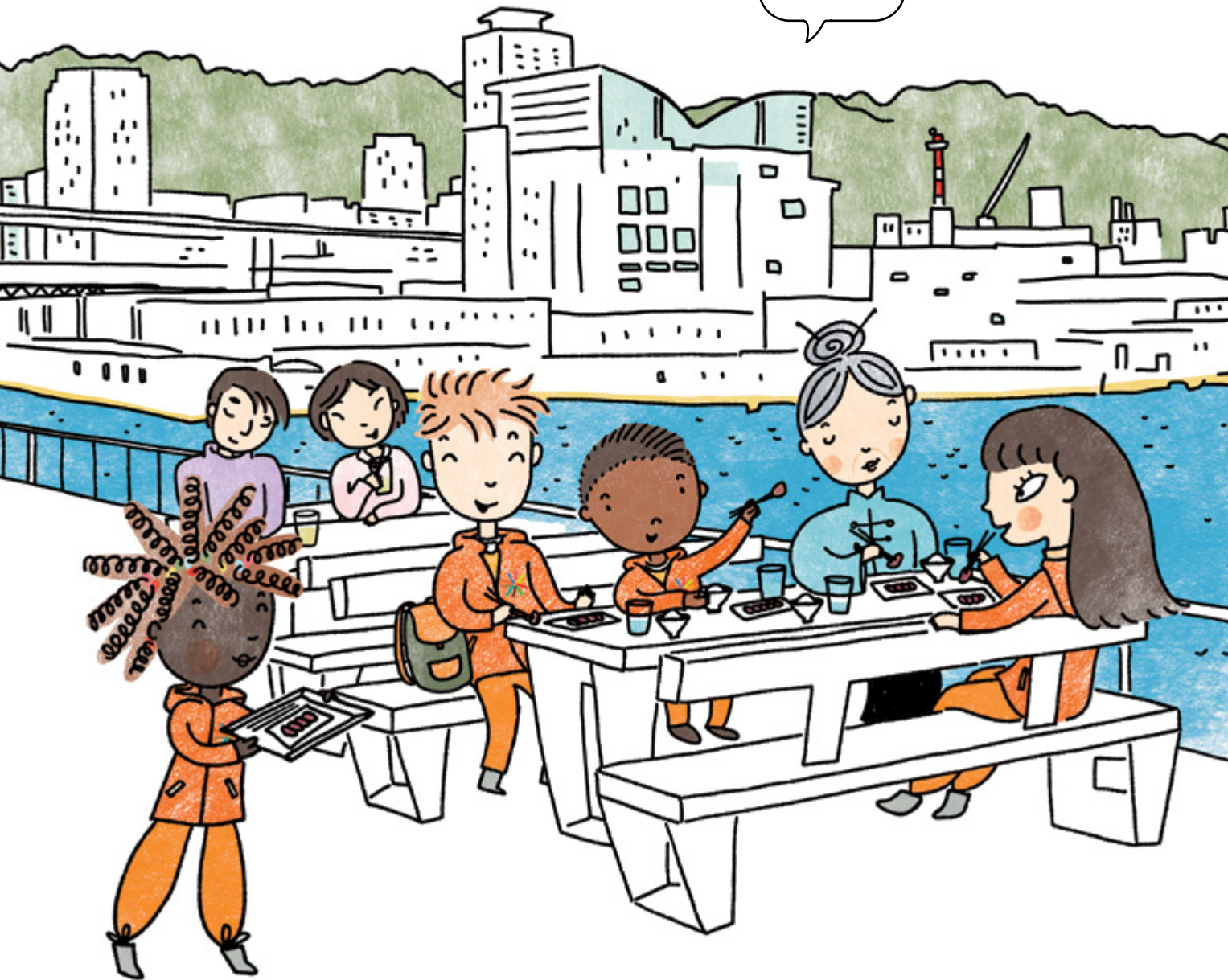
O atu loa a COPE ke he uafo.

Fagai e Tupuna Fu a lautolu ke he vala povi Kobe.



Aeae, tataka ke he gutu!

Iami!





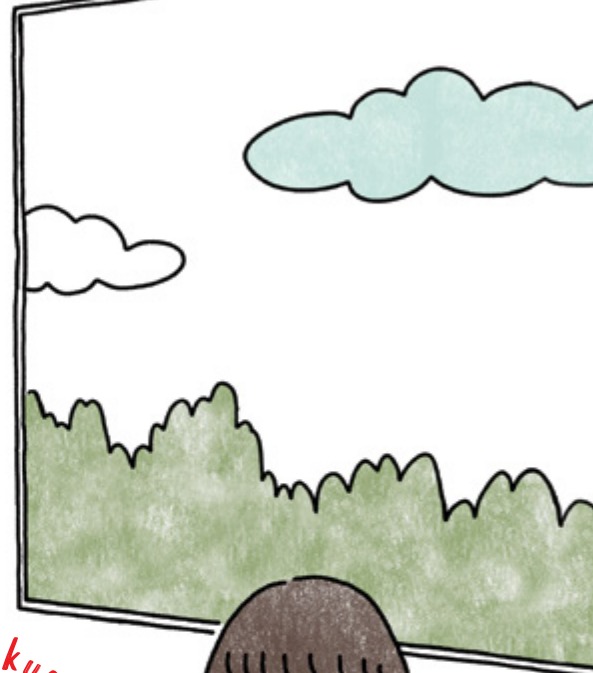
Ko lapana, kehekehe mo e loga e tau lekua-tupu fakaofu ke he motu,
ti kua mahani e tau fanau mo e *tumau ke mautali.*

Loga e tau mena mitaki ha COPE ne ako mai ia lautolu.

O atu a lautolu ke he tau aoga ikiiki pihia ke he tau
aoga he tau fanau nakai la o atu he aoga ikiiki.



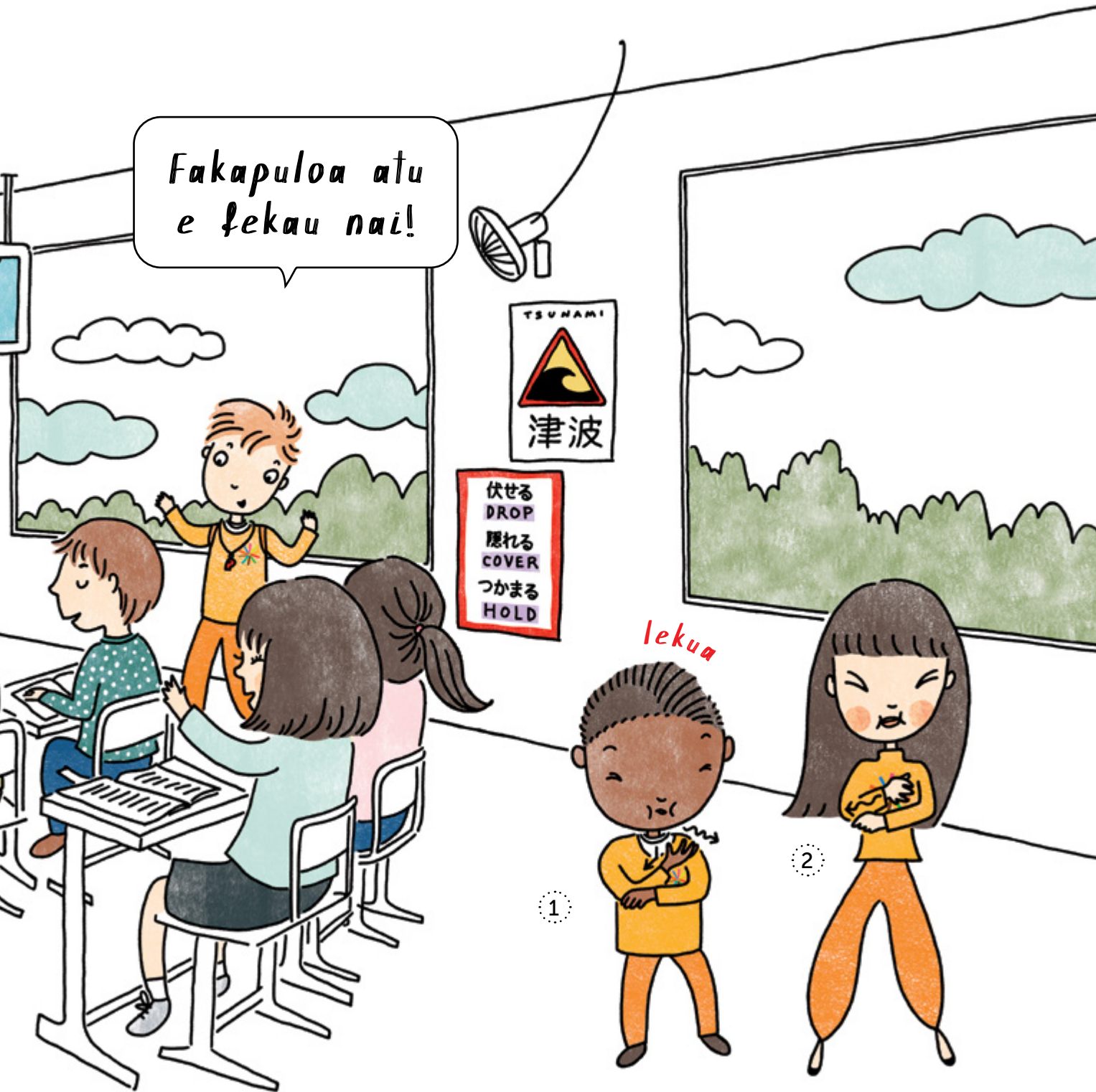
Fakapuloa atu
e fekau nai!



lekua

1

2

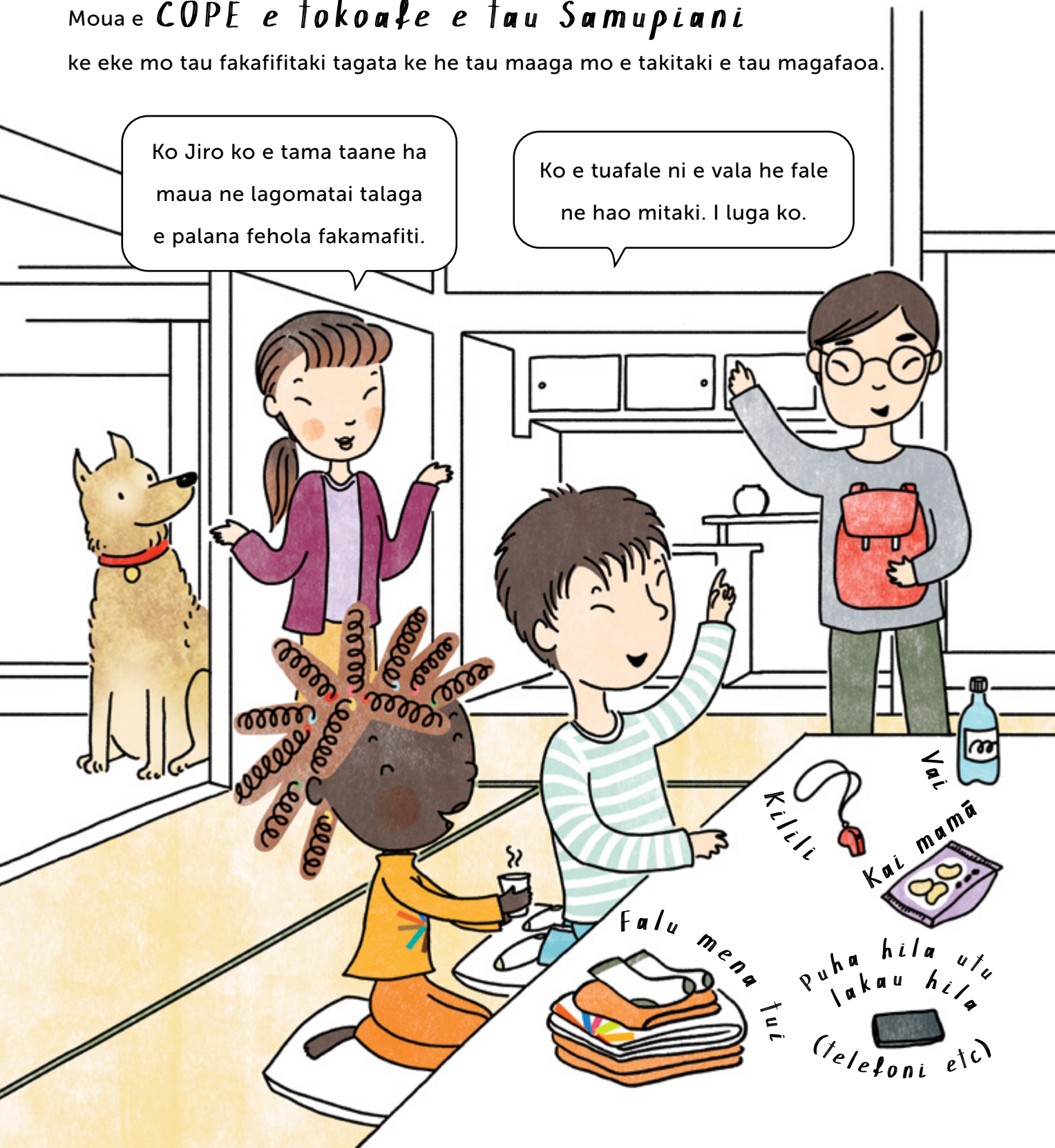


Moua e COPE e tokoaʻe e tau Samupiani

ke eke mo tau fakafifitaki tagata ke he tau maaga mo e takitaki e tau magafaoa.

Ko Jiro ko e tama taane ha maua ne lagomatai talaga e palana fehola fakamafiti.

Ko e tuafale ni e vala he fale ne hao mitaki. I luga ko.



Kilili
Vai
Kai mamā
Falu mena tui
Puha hila utu lakau hila (telefoni etc)

O mai ke fafao e tau koloa
mautali peau tolotua!

Mautali
totō ka e poi!



Telefoni



Tupe



Molikasa



pepa lakamau
higoa & telefoni



Letio



Puha tului kafo



Koloa lakafialia tama



Ke he taha fakaakoaga pauaki, iloa e COPE ko e kehekehe
ni e lauiaaga he tau lekua tupu fakaofu ke he tau tagata.
Falu matakutaku a lautolu, fakaagitau mo e tupetupe.

3 e matagahua mahuiga ke lata mo e
Tului Manamanatuaga,
kaeke kua tupetupe e tama tote.



1



ONOONO

*fakakia kua hao
e tama.*

*Kitia ko e fai
mena nakai
ne manako.*

2



FANOGONOGO

*Huhū fakamitaki
ke he tama ko
e fefē haana a
manamanatuaga.*

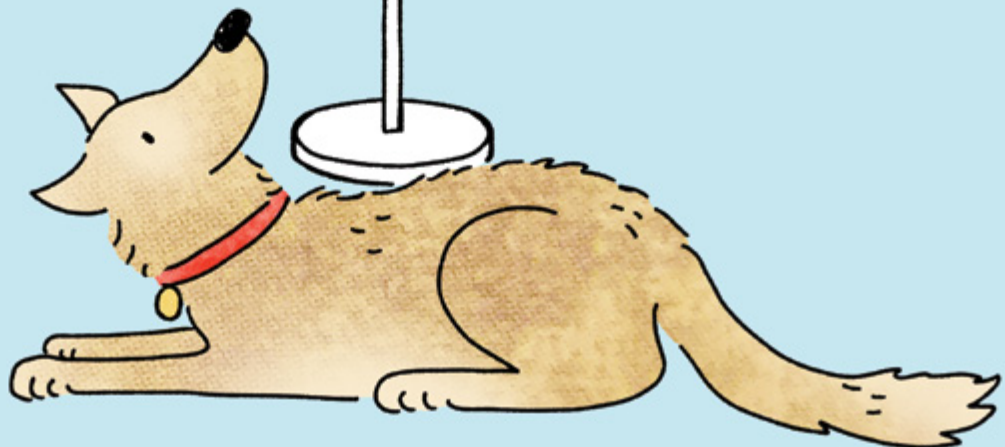
3



MATUTAKI

*fakamatutaki e
tama mo e haana
magafaoa mo e
tau faiaoga.*

E, *to mailoga* e mautolu



Ke he hala he ō, ahiahi atu a COPE ke he Fale Toka Koloa Peau Tolotua.

Aho 5 Novema ko e aho Mailoga
e Peau Tolotua he Lalolagi
ke fakamanatu aki e tala ki a
Inamula mo Hi,
ko e tugi he Ulu Alaisi.

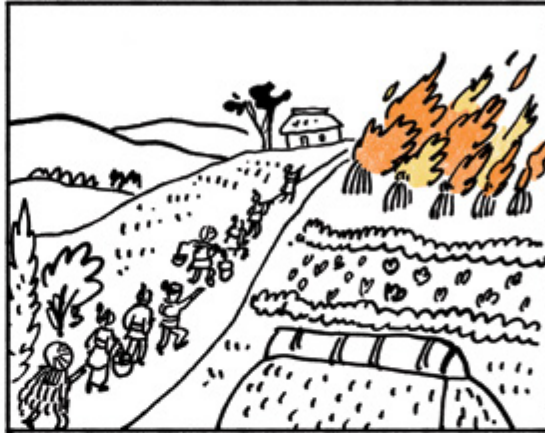


Taha e po 1854, ne to e mafuike makimaki.
Ko e takitaki he maaga ko Gohei,
kua tupetupe lahi ke he peau tolotua.

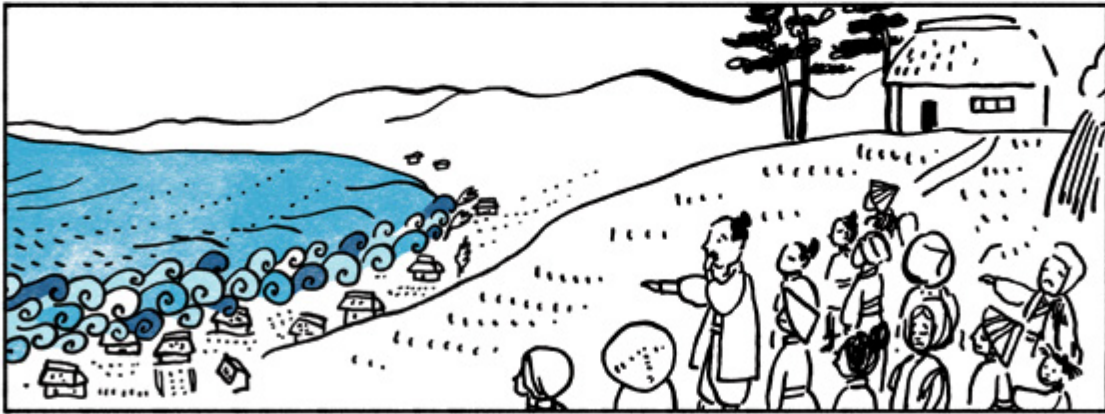


Ko e puhala ke fakapuloa ke he tau tagata ke mamatike ke fehola,
kua tugi e ia e ulu alaisi haana ne to he atu mouga, ke kitia mo e
takitaki aki e tau tagata ke o atu ke he matakavi tokoluga.





Ha ne to e laa, kua puho lahi e ulu alaisi. Tafepoi hake e tau tagata ki luga ke lagomatai ke tamate e afi.



Onoono hifo a lautolu ke he tau peau kelea ne moumou e tau kaina i lalo. Ko e lagatau ha Gohei kua fakahao a lautolu.

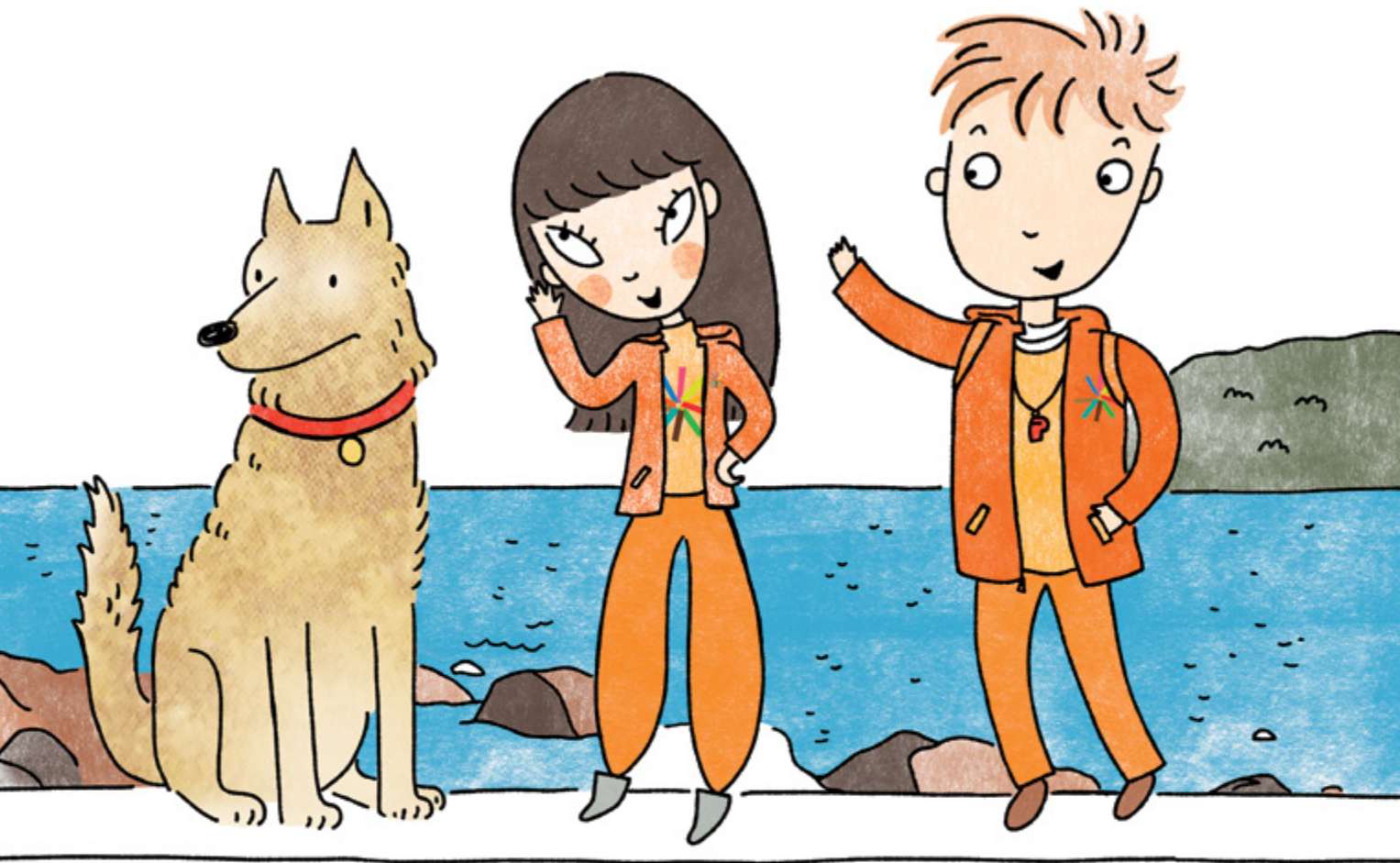
Ke he tau magaaho fakamui, kua ta e Gohei e taha kaupā lahi mahaki mo e tokoluga ke puipui aki e maaga mai he tau lekua tupu fakaofu anoiha.



Pau a lapana ko lautolu ni taha motu ne moua tuai e *Tau Fakailoaga Hataki Maʻiti* kua mahomoatu he lalolagi. Ka mole atu e mafuike, kua fitā e fakailoaga peau tolotua he fakailoa tolu minisi he mole ke he TV, leotaogo mo e tau telefoni.

Fakailoaga ke he tau tagata oti.
**O ATU KE HE
MATAKAVI TOKOLUGA!**





Alaala mitaki e piuni!

Ko e tau maaga he tau kaukau tahi kua leva e moua e tau fakailoaga peau tolotua. Ke he tau pale laa oti, matahola 5 afiafi, tagi e *logo pauaki* ke he motu katoa. Ko e logo nei ke fakakia mo e fakailoa ke he tau tagata oti hagao ke he tau lekua tupu fakafofo.

Tutaki atu a COPE ke he *matakau lagomatai* ke he tau fanau alaga lololole.

Taha e tama fifine ke he nofoafaihui.

Lautatai e kelekele ne nonofo ai a mautolu. Ti fakaako tumau a mautolu ke o atu fakamafiti ki loto he motu mo e fakaaoga e nofoafaihui ke he tau hala ne maeke



Tuli e teliga haaku. Ti nakai logona e au
e tagi he sailini po ke fakapuloa lekua
tupu fakaofu ka e lutulutu e tamaulima
haaku kaeke ke fai lekua tupu fakaofu.

Pihia ni haaku.
To mafola e tekenolo!

O hake a mautolu lakahui ke he
matakavi i luga
ke he Fale Tolo ma e tau
Lekua Tupu Fakaofu.

Tama taane fuata:
Felagomataiaki ni a mautolu,
ti nakai fai
tagata ne toe!



Ke he maaga ko Futai, kua talaga he Takitaki he maaga e kaupā
tokoluga mo e fai gutuhala ke puipui aki e taone mai he tau peau tolotua.

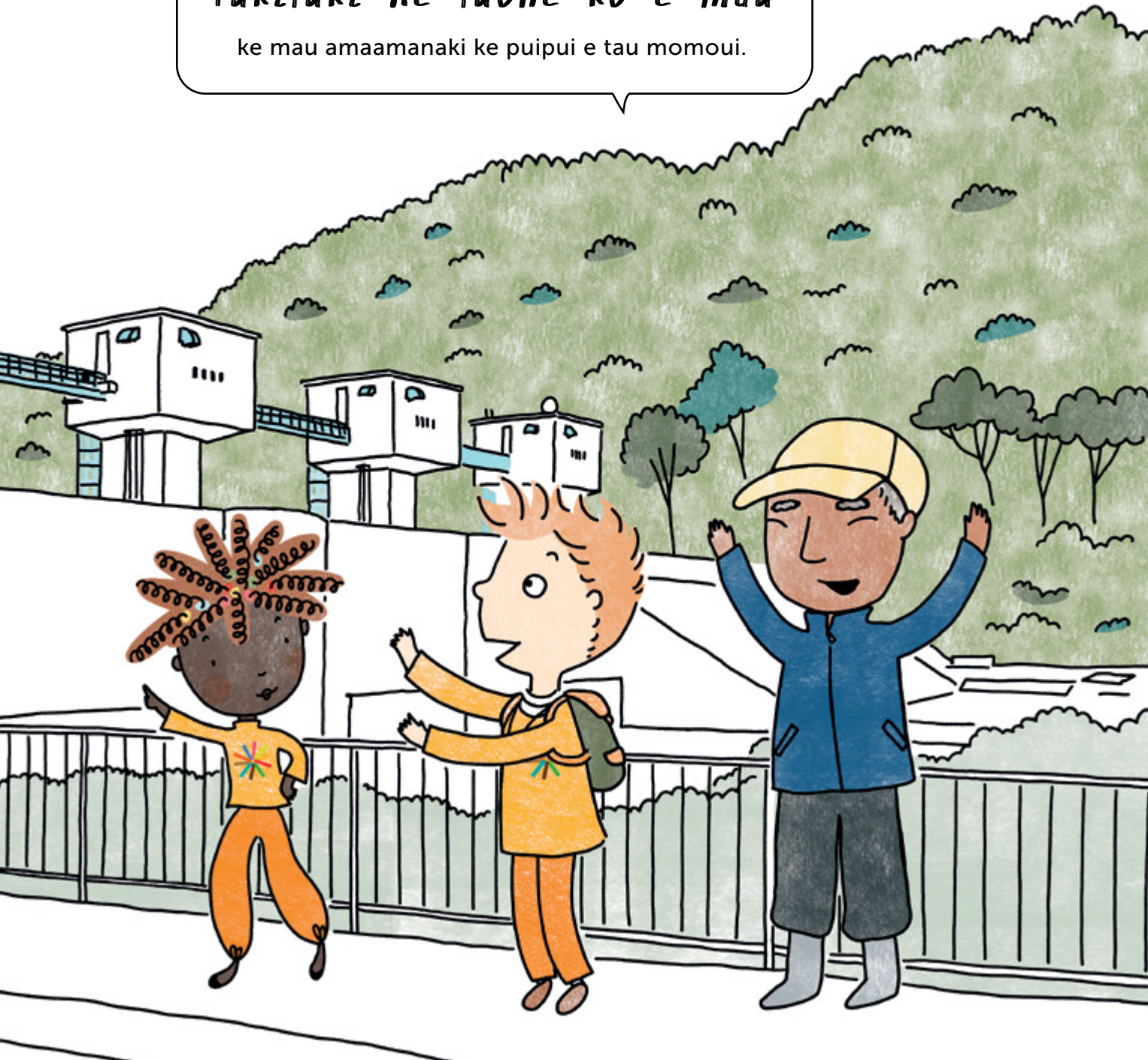
Mitaki lahi.



Leva lahi to mau e kaupā. Tokologa ne ui tau uka,

*ka e malolō e tua he
Takitaki he taone ko e mua*

ke mau amaamanaki ke puihui e tau momoui.



Ahiahi atu a COPE ke he maaga talahaua ko *Matasusima*.
Fai magaaho a lautolu o atu evaeva mo e onoono ke he mataafaga.





Homo e tau fakatū ia haau ma Ping.

Fakaaue ma Candy!

Uufu, uufu!

O atu a COPE ke he mataafaga. Ofolele, tagi e logo.

Fitā a Sense he lutu mo e haia ne fa e akuaku e oneone.



Ko e ha a Rescue
ne ai finatu ki tahi?

Kamata e kekekele
ke lulu

Peau tolotua! Mafiti, o atu ke he
matakavi tokoluga.

Fanogonogo,
ko e gu lahi

Onoono,
*kua liu e peau
mamao atu.*



Fakamafiti a COPE he fakagahua e tau
lotomatala lekua tupu fakaofu ha lautolu.

O ke he mo
e mataafaga!

Tafepoi!!!

Mumui mai.
Nonofo auloa.





O ATU KE HE MATAKAVI TOKOLUGA,
po ke toli hake tau fale tokoluga.

Fakaave mai, totou oti e tau laka.



Lagomatai atu e lautolu e tau fanau ikiiki, tau tagata alaga
lolelole mo e tau tupuna, takitaki atu a lautolu ki luga.

Mahina a Mati 2011, ko e *Maʻuʻike Makimaki ke he Faahi Uta Iapana* ko e taha he tau mafuʻike tokaimaka kua fakamau ko e 9.0. Mui mai e peau tolotua makiaka kua lahi e moumou mo e malona ke he kautahi he Pasifika.





Tokologa e tagata kua kaumahala mo e ha lautolu a tau fakahalehele.
Malona tiaki e tau kaina. Kua tafea e tau peleoafi ke he vai. Kua fakaatuatu
e tau veve he tau kala puhalatū. Matolu e tau pelapela kua tanumia e kelekele.

Monuina e matatahi Matasusima kua puipui malu nakai lauia he peau tolotua. Hoko hake ni e tukuna peau ke he 3.8 e mita he tokoluga kua tote lahi fakatatai atu ke he tau peau 40 mita he tokoluga ne tafea e tau taone ke he tau kaukau tahi.



Ua tupetupe.
Mafola a tautolu he na ē.



Lautolu ne momoui ha *ne fetui auloa* ke he fata ke valu
aki he fale tali fenoga. Ha ne tau fakakia a lautolu ko hai ne fai kafo,
pele tau feua mo e logotuki he fakatali.



Tufa atu e COPE e tau mamoe, tau mena tui,
tau puha tului kafo, tau vai mo e tau kai mamā.

Ha ne tagi e tama fifine tote, ofofofo agaia
ni a ia. Noho hifo a Candy ki lalo mo e
tutala fakatote atu ki a ia.

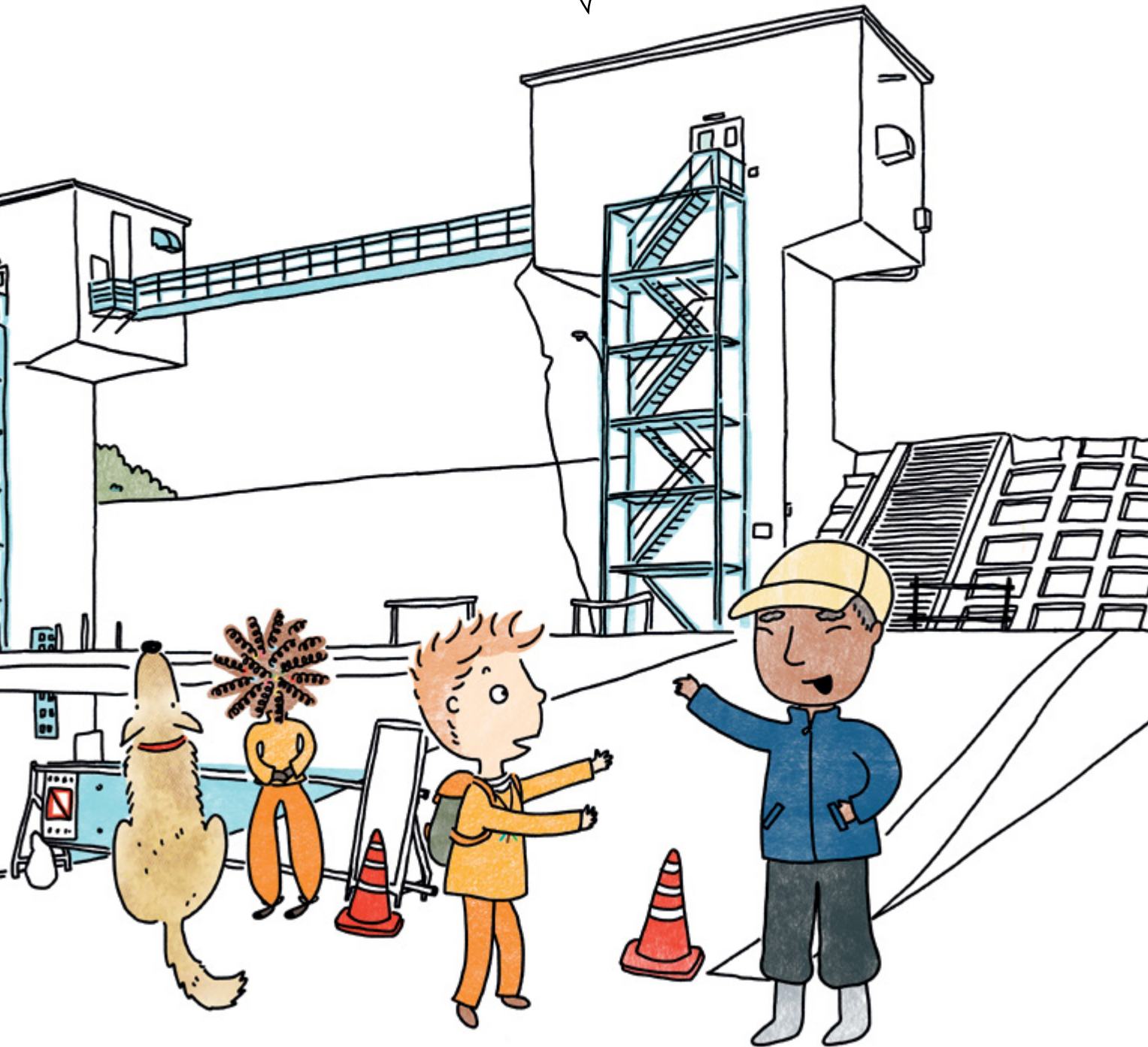


Hi, ko e higoa haaku ko Candy. Lali ke fafagu.
Fifitaki mai, 1—fafagu hake, 2—fakatoka mai ki
fafo, 3—fafagu hake, 4—fakatoka mai ki fafo.
Hau a ke o ke kumi e tau mamatua haau.

Fai faahi tapu he mole atu, kua fakamailoga e Takitaki ha Futai ko e toa malolō ha kua maeke he kaupā tokoluga ne ta e ia ke fakahao e taone mai he peau tolotua. Nakai fai kaina ne tafea. Ke fakamooli atu, tuga ni nakai fai lekua ne tupu.



Ko e Takitaki ha tautolu ko e fakamoui. Tau uka mooli e kaupā
puihui haana ka e a ne mai nakai fai a kua leva e tafea a Futai.



To fai tau to liu a lapana ke he haana tuaga. Lagomatai atu e tau Samupiani COPE

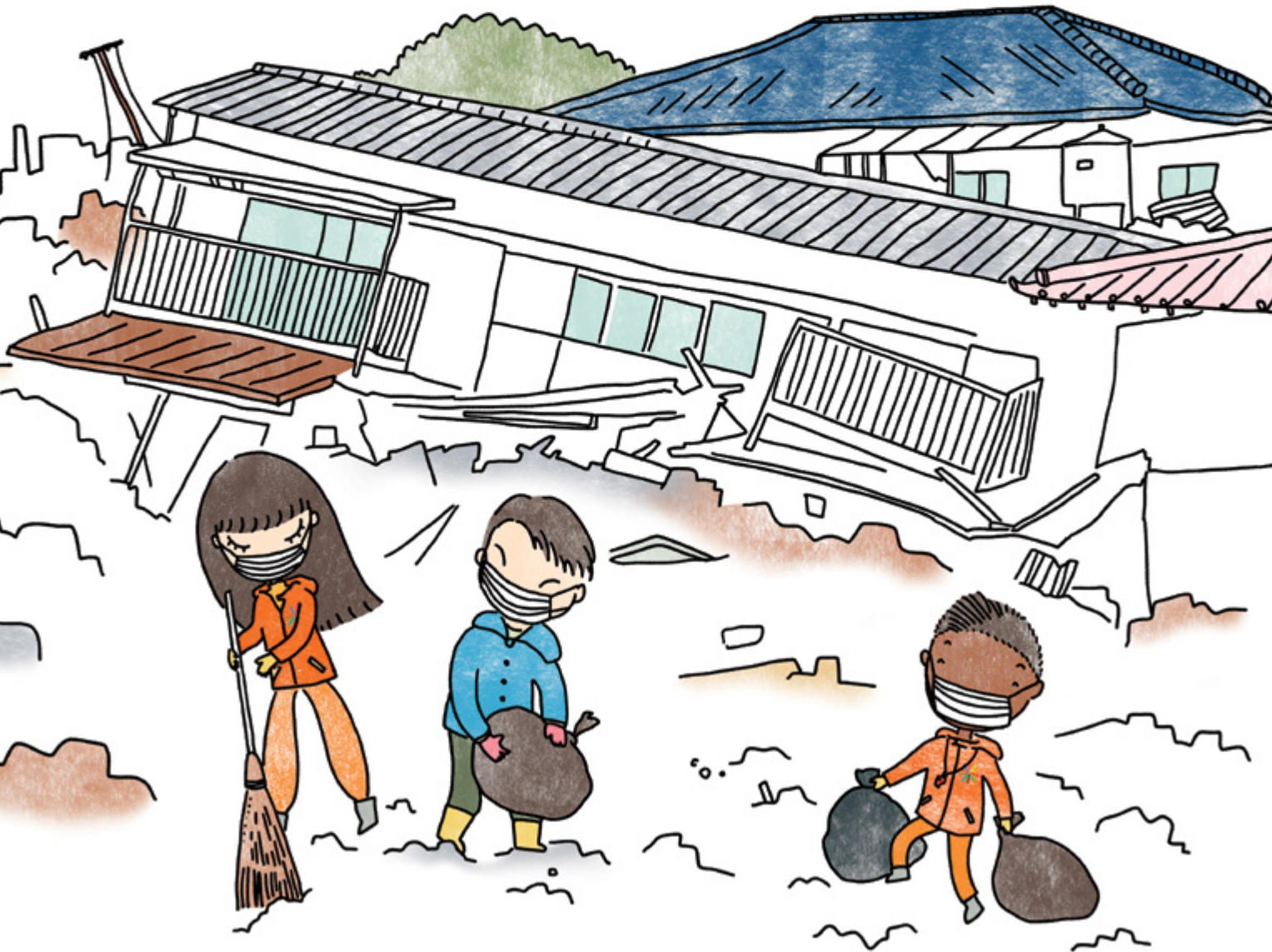
ke liu talaga e maaga mole atu e peau tolotua,

fakameā he tau pelapela mo e falu he tau veve.



Liu e tau aoga hafagi, liliu mai e tau fanau mo e tau loto kua pukenamo ke he fiafia, falanaki mo e felagomatai aki ko e taha ke he taha.

Fakaaoga e aho aoga fakamua ke fafao he tau kato mautali mo e liu ako he tau hala
ke fehola atu ke he tau matakavi tokoluga.



Hohoko atu a lautolu ki Mouga Emei,
hakehake lahi a GMF ke he haana matakau.



Hoko atu a lautolu latatonu mo e to laa fulufuluola ke he vaha makalili.

Haia ma COPE,
hohoko tuai a tautolu ki kaina.



L A U T O L U N E F A I L A G O M A T A I K E H E C O P E



*Martha
Keswick*

COPE

TAGATA TOHIA

Ko Martha Keswick ko ia ne tohia e tala tu fakaholo mo e fakaliiuaga Max mo Mei ma e tau pepa fakatino, ko e tau veveheaga tala hagamoa ia kia Zhonghuo Mingren ke he tau tagata mahuiga ma e motu ko Saina kua fakakite ke he tau puhala fakakitekite ko e komiki ma e pepa Pangu. Ko e gahua ha Martha ke lata mo e Keswick Foundation ke lagomatai ke he matagahua lekua tupu fakafo i Saina.

Nofo a Martha i Hong Kong mo e haana taane mo e tau fanau toko fa mo e ua e kuli.



*Mariko
Jesse*

COPE

TAGATA TA

FAKATINO

Ko Mariko Jesse ne fakaako he Aoga Central St Martin's ti hokotia foki a ia ko e taha Pulotu Faiaoga. Ko ia ko e pulotu ta fakatino ma e tau pepa ti gahua foki a ia ke he loga e tau fakaholoaga kehekehe he lalolagi mai he tau pepa fakatino ti hoko ke he talaga he tau koloa tuga e tau polu maka.

Nofo a Mariko i San Francisco ti mautali tumau a ia he tau magaaho oti neke to e tau mafuike.



*Timothy
Sim*

COPE

TAGATA FAKATONUTONU

Ko Dr Timothy Sim kamata gahua ia ko e lagomatai ma e tau momoui tagata, fakamahino ke he lagomatai ma e tau magafaoa. Ko e tau 2008 gahua fakamahino ni a Tim ke tukutuku hifo e tau lekua tupu fakafo he oti e gahua mo e tau fanau, tau magafaoa, tau aoga, tau maaga ne lauia he mafuike Wenchuan he tau 2008. Tohia e ia loga e tau pepa ke he vagahau Saina mo e Peritania.

Ko Tim, ko e tuipulotu ke he aoga Singapore University of Social Sciences.



Ko e pepa COPE Peau Tolotua kua fakamalolō e tau fanau ke he tau lotomatala ke nonofo haohao mitaki mo e ko lautolu foki ko e tau takitaki ke he mautali tumau ma e tau lekua tupu fakafofo.

— MARCO TOSCANO - RIVALTA

Chief, UNDRR Regional Office for Asia and the Pacific

Mahino mitaki e matapatu fekau he pepa COPE Tau Peau Tolotua hagai ke he aga mo e tau lekua peau tolotua mo e maeke he tau fanau ke mau amaamanaki, pihia mo e tau magafaoa mo e tau maaga.

— PHILIP ENGLAND

Emeritus Professor of Geology, University of Oxford

Ko e peau tolotua 2004 Moana Initia ko e mahaikava tokaunaka ke he tau momoui ha tautolu, mua atu ha kua tokologa lahi ne kua mamate mo e lahi mahaki e malona. Ko e pepa COPE Peau Tolotua kua hagai ke fakaako e tau fanau mo e tau tagata lalahi ke iloa e tau puhala ke muitua ke puipui aki a lautolu.

— JEKULIN LIPI

Global Focal Point, Sendai Children and Youth

Ko e pepa COPE Peau Tolotua ko e koloa aoga mo e alito ke lagomatai aki e tau fanau ke maama e tau lekua tupu mai he peau tolotua mo e fakaako a lautolu ke he tau puhala fakahao ke leveki mo e puipui aki a lautolu mo lautolu ne nonofo takai.

— SONOE MASHINO

Professor, Research Institute of Nursing Care for People and Community, University of Hyogo

Ko e tau talahauaga kua tonu mo e hako ko e taha mena kua lata tonu he tau fanau oti ke moua vave mo e fakaaoga e tau fifiliaga tonu. Mahuiga lahi ke he tau magaaho lekua tupu Fakafofo.

— MISHAL HUSAIN

Broadcaster

Aoga COPE ke he maaga Sichuan.

I lalo hifo he Takitaki Tupuna ko Fu, akomena a COPE ke he tau fakaakoaga lekua fakatufugatia mo e tau lekua tupu Fakafo mo e tumau ke mautali. Kau auloa ke he tau fenoga Peau Tolotua I Iapana, kua fakakite ha lautolu a tau makaka ke he tau puhala paleko atu ke he tau malona mai he tau lekua tupu fakafo.



www.cope-disaster-champions.com

  COPEdisasterchampions

T A U M A T A U L U C O P E

- Tau Mafuike
- Peau Tolo Tua**
- Uha Lolo & To Fakapuke
- Afā
- Tau Lokauta
- Malolo e Kelekele
- Tau Afi Tolofia
- To Laa
- Tau Mouga Pa
- Tau Peau Vela
- Tau Uha Tuli
- Malolo Kaukau Mouga



COPE

Fakakehe a.

Mautali mo e Tu Tokaga Mau!