



COPE

.....  
Mautali ma e tau lekua tupu fakafo.  
.....

# TAU MAFUIKE!

Tohia e Martha Keswick + Mariko Jesse + Timothy Sim









## Mautali ma e tau lekua tupu fakaofu – Tau Mafuike

Nakai maeke ke tohia mo e nakai fai tonuhia.

© 2018 Martha Keswick, Mariko Jesse & Timothy Sim.

Nakai maeke ha vala ke liu lolomi.

*TOHIA* Martha Keswick

*TA FAKATINO* Mariko Jesse

*FAKATONUTONU* Timothy Sim

*FAKAMANAIA E PEPA* Sandy Lui & Klinton Kwun

*TAKITAKI HE MATAGAHUA* Christine Messervy

*FAKALILIU E* Birtha Lisimoni-Togahai

*MATAKAU TALAGA* PPP Company Limited, Hong Kong, China

[www.cope-disaster-champions.com](http://www.cope-disaster-champions.com)

  COPEdisasterchampions

Kua fiafia lahi mo e Oue Tulu Tulou ki a Mrs. Birtha Lisimoni-Togahai ke he fakaliliuaga mahuiga he tohi nei. Fakaauue foki kia Mrs Rossylynn Pulehetoa-Mitiepo ha kua lagomatai e fakakatoatoaaga he fakaliliuaga.

Kua maeke ke moua laulahi he tau ohi Niue oti ma è maamaaga malutia mo e fetuiaga laulahi.

Tau Fakaauue Lahi ki a:

Professor Philip England, University of Oxford



GOVERNMENT OF NIUE



COPE MAFUIKE TAU MATUTAKIAGA





COPE

.....  
Mautali ma e tau lekua tupu fakafo.  
.....

TAU MAFUIKE!

Tohia e Martha Keswick +

Mariko Jesse + Timothy Sim

*Ko hai e  
Takitaki Tupuna ko Fu?*

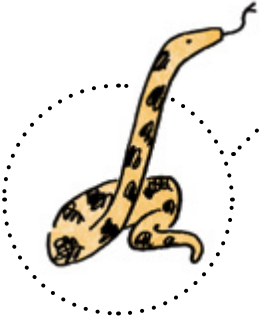
Ko e faiaoga latau kung fu ko ia foki ne fakatu e Aoga Mouga Emei Wushu, taha higoa foki haana ko Shifu, ko ia malolō e moui akonaki mo e kafilo foki ka e lahi mahaki haana atefua. Fetamakina a ia kua mate he magaaho ne malolo e aoga he to e mafuike Wenchuan he mahina Me 2008 ti tali mai kua foaki haana moui ke fakamatutūhifo e tau malona ha ko e tau lekua tupu fakafo.



*Ko e heigoa e  
Matakau COPE?*



Ko e matakau he lalolagi ne paleko atu ke he tau lekua tupu fakafo, galo atu ki loto he maaga ko Sichuan ne tamata he Takitaki Tupuna ko Fu. Ko e Matakau COPE – ko Candy, Ollie, Ping mo Eddy ko e tau fanau fuata nakai fai mamatua kua tamai a lautolu he tau kaina leveki ke nonofo ke he Aoga COPE mo e fakaako ke he tau puhala ke tukutukuhifo e tau malona mai he tau lekua tupu fakafo.



**Sense  
KO E GATA**

Ko e gata fulufuluola 25 e tau. Moua e ia e lotomatala ke talaiki e tau lekua tupu fakafo. Fagai aki he Takitaki Tupuna ko Fu e tau punua kumā a ia he tau mahina oti.

**Rescue  
KO E  
MANU KULĪ**

Ko e kulī Kunming lahi mahaki, 8 tau. Makaka lahi a Rescue he kumi e tau tagata kua galo. Fiafia foki a ia ke poki lago.



# Ko e Matakau C O P E



## Candy

**KO E TAMA  
FIFINE LEVEKI  
ATU KE HE FALU**

12 tau tau moui mai he maaga ko Kranshoek i Afelika Toga. Ko Candy, malolō, alaala mo e fiafia ke ta e tau palau mo e koli hula hupi. Ko e gahua haana ke leveki atu ke he tau matakau ne tu hagahagakelea e tau momoui lagā mai ha ko e tau lekua tupu fakaifo tuga e tau fanau ikiiki, tau momotua mo lautolu ne tino lololele.

*Lotomatala ke he tau lekua tupu fakaifo:  
Tau afi tolofia*



## Ollie

**KO E SAIENTISI**

13 tau moui mai i Kalasiosi i Niu Silani. Iloilo a Ollie, houa, feua faofao tino mo e fiafia ke he totou e tau fetū mo e tau lagi mamao pihia mo e pelē lakapī.

*Lotomatala ke he tau lekua tupu fakaifo:  
Tau Mafuike*



## Ping

**TAGATA FAKAFETUI  
MO E FALU**

12 tau moui mai i Hong Kong. Gahuahua e tau lima ha Ping, gutu talatala, makaka mo e fiafia ke tunukai mo Wushu.

*Lotomatala ke he tau lekua tupu fakaifo:  
Fakapuke*



## Eddy

**ENESINIA**

12 tau moui mai Bahia, Brazil. Fia iloa mena a Eddy, mahifi, nofo fiafia mo e fiafia ke he Lego mo e heke tau lapaholo.

*Lotomatala ke he tau lekua tupu fakaifo: Malolo tau kaukau fonua/mouga*



## Vagahau fakamailoga (nakai fai leo)

Ha kua nakai logona mitaki e tau teliga ha Eddy, fakaaoga e COPE e Vagahau Brazil nakai fai leo LIBRAS. Maeke nakai ke kitia e tau fakamailoga ke lata mo e haohao, to **mafuike** mo e **mautali**?

Ko e magahala tau tupu ke he maaga ko Sisuana. Kua hake mai e  
laa he mouga hahau ko Emei, kua ko foki e tau moa. Kua hoko mai  
e magaaho ke mamatike ma COPE.

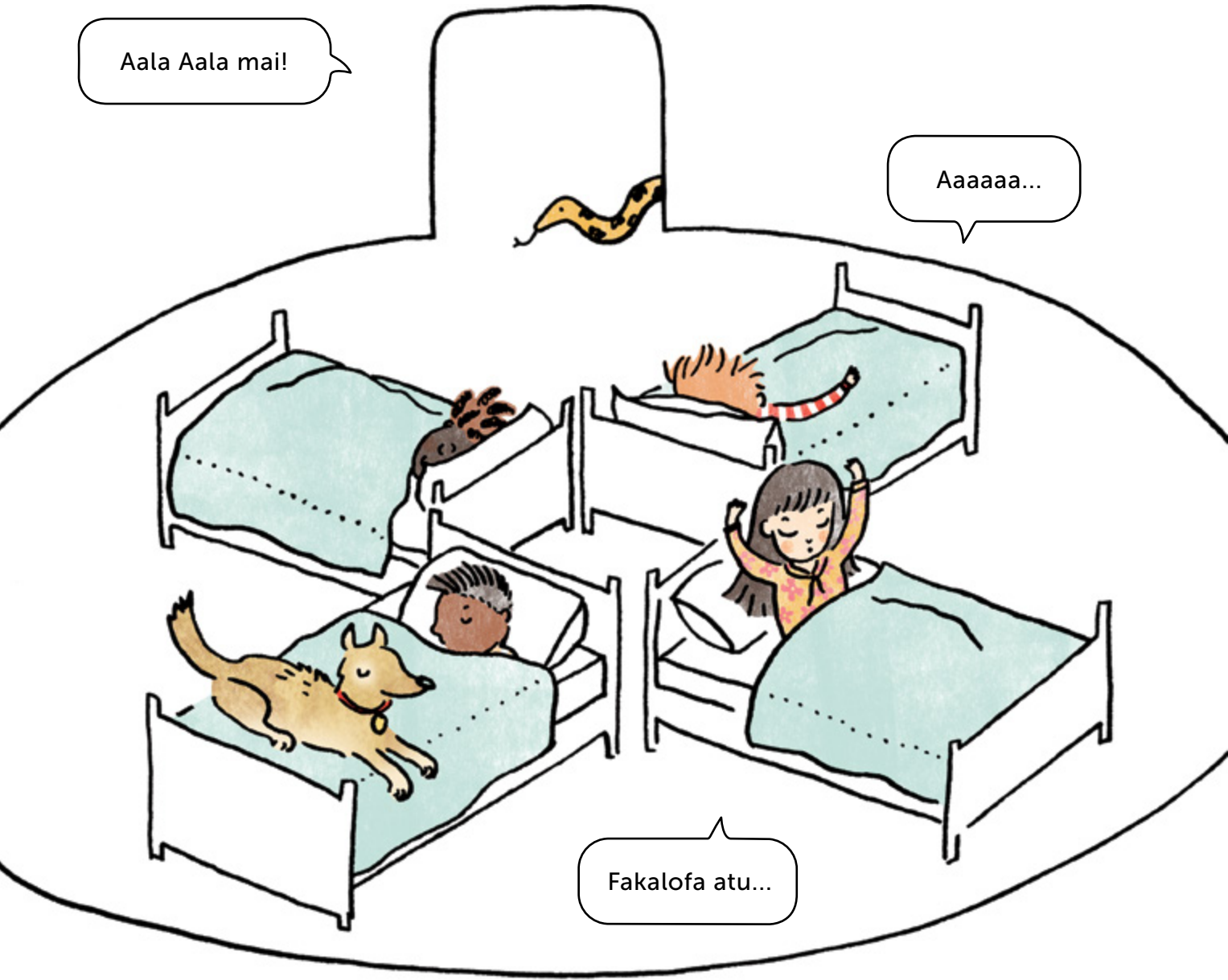




Nakai lutu a Eddy. Fiafia lahi e patu ke mohe, mohe, mohe.

Aala Aala mai!

Aaaaaa...



Fakalofa atu...

Ha ne fa e faofao Tai Chi e Tupuna ko Fu he pogipogi.  
Fofola atu haana tau lima tuga e manulele gutu loa hui  
loloa ko e sitoku.



Milino mo e mautali, kahoa e ia a Sense he kakia ti o  
atu ke oko fuamoa ma e kai pogipogi.

Fakalofa atu, Sifu.

Fakalofa atu,  
COPE.

Kamata e fenoga...  
**M A F U I K E**  
ha tautolu he aho nai. Feleveia ke he  
poko Sene, matahola 7... MATILA!



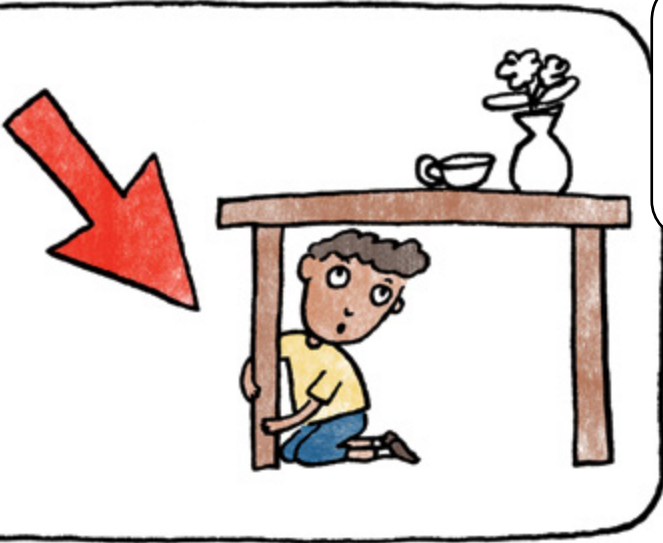


Pa e tau mata ti fafagu lagatolu...  
Nonofo hake fakahako mo e malolō tuga e mouga...  
Ko e matagahua ha tautolu ke lagomatai  
e tau fanau ikiiki ke mautali ke he tau mafuike!  
Fakamalolō a tautolu...  
Logotuki, fafagu hake mo e fanogonogo fakamitaki.

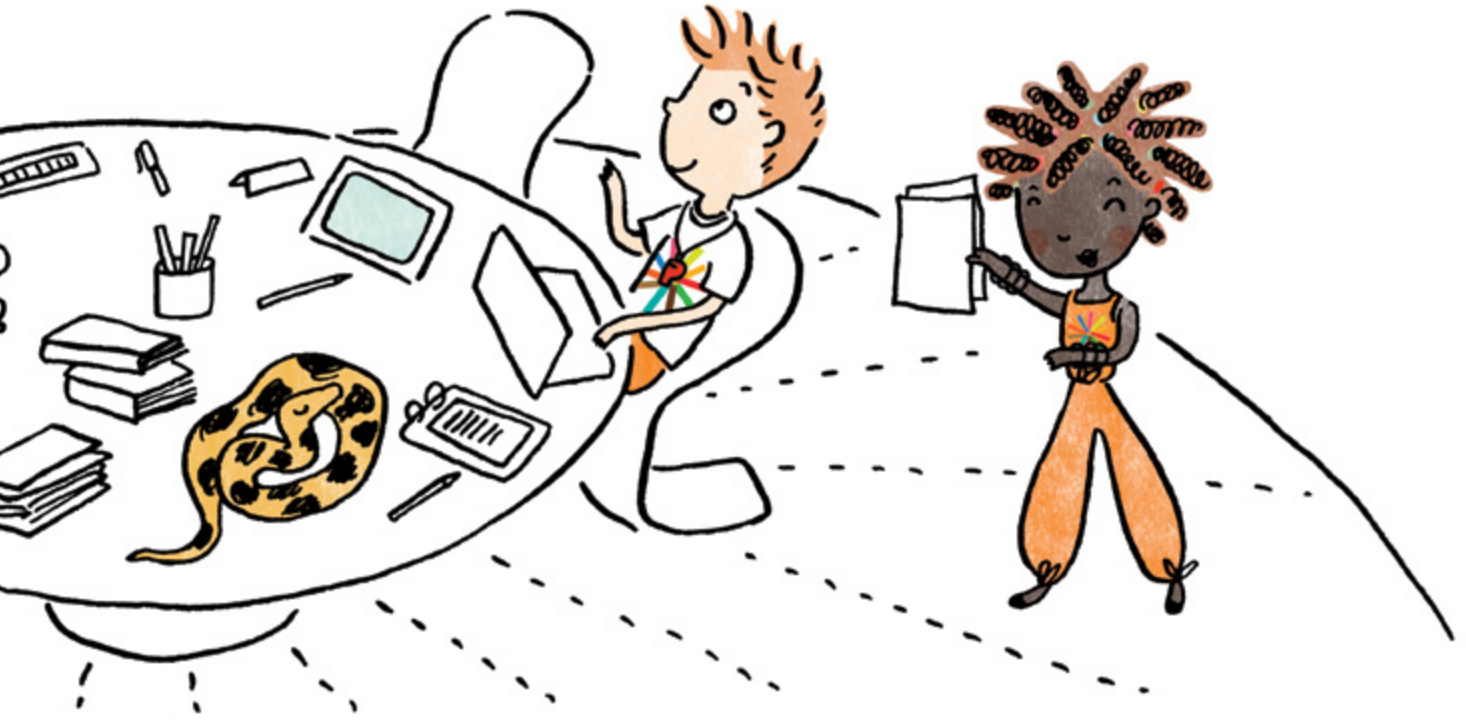
Kaeke ke fakalutukia mai e  
mafuike, manatu ke...

LALO,  
FAKAMALU  
MO E  
TAPIKI.





Mole atu e lulu fakamua, pepelu mo e nofo hifo ke he timeni, FAKAMALU he LALO laulau mo e TAPIKI ke mau.



1



Logotuki ma Candy ke oti  
e lulu he mafuike.

LALO,

2

FAKAI

Ollie, mautali ke lata mo e tau  
*lulululu fakaoiotei.*



MOE

3

Ping, ua matakutaku.



Eddy, taute e fakailoaaga.  
Uulo e kilili po ke hohā fakalahi.

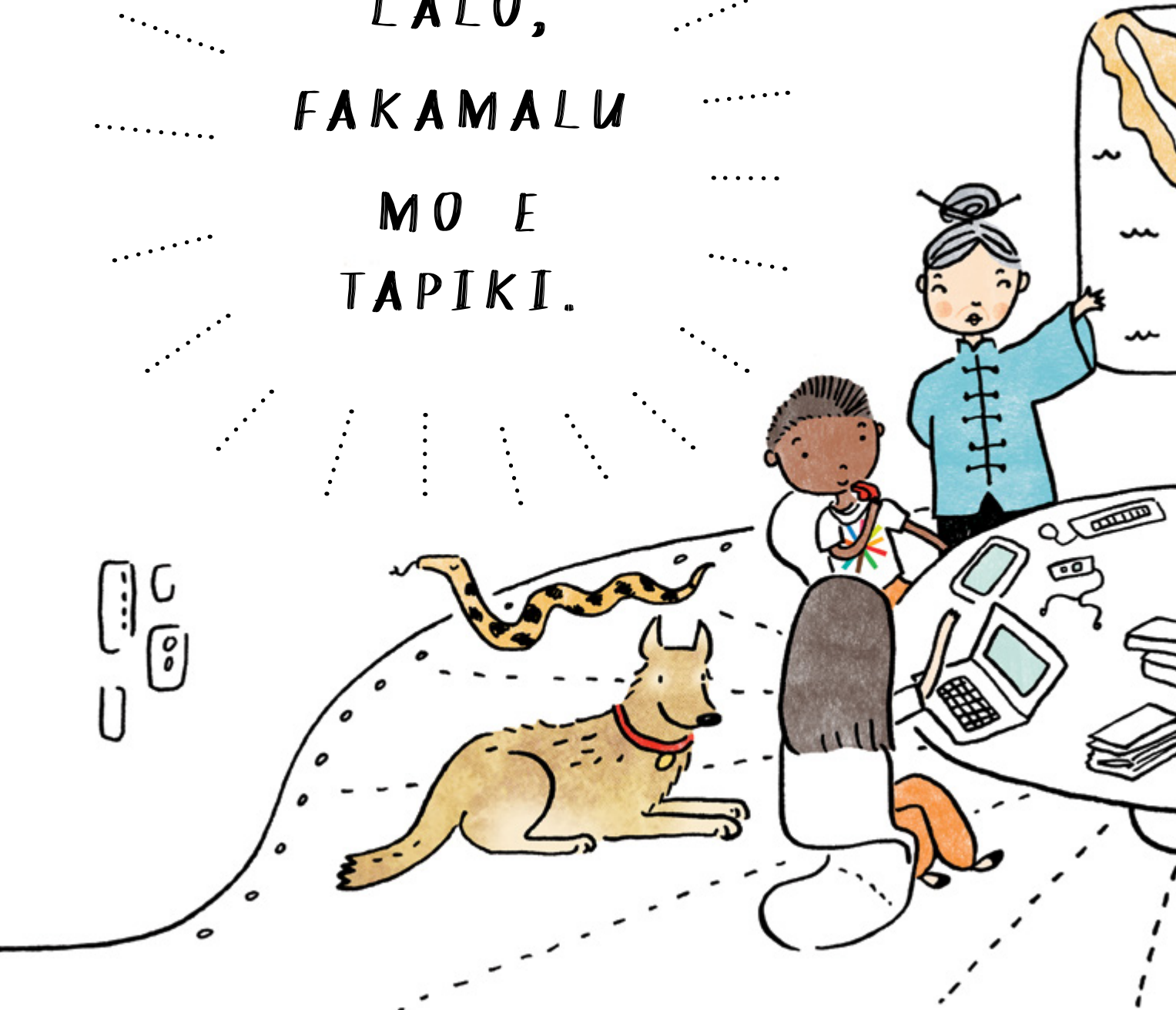


M A L U

T A P I K I

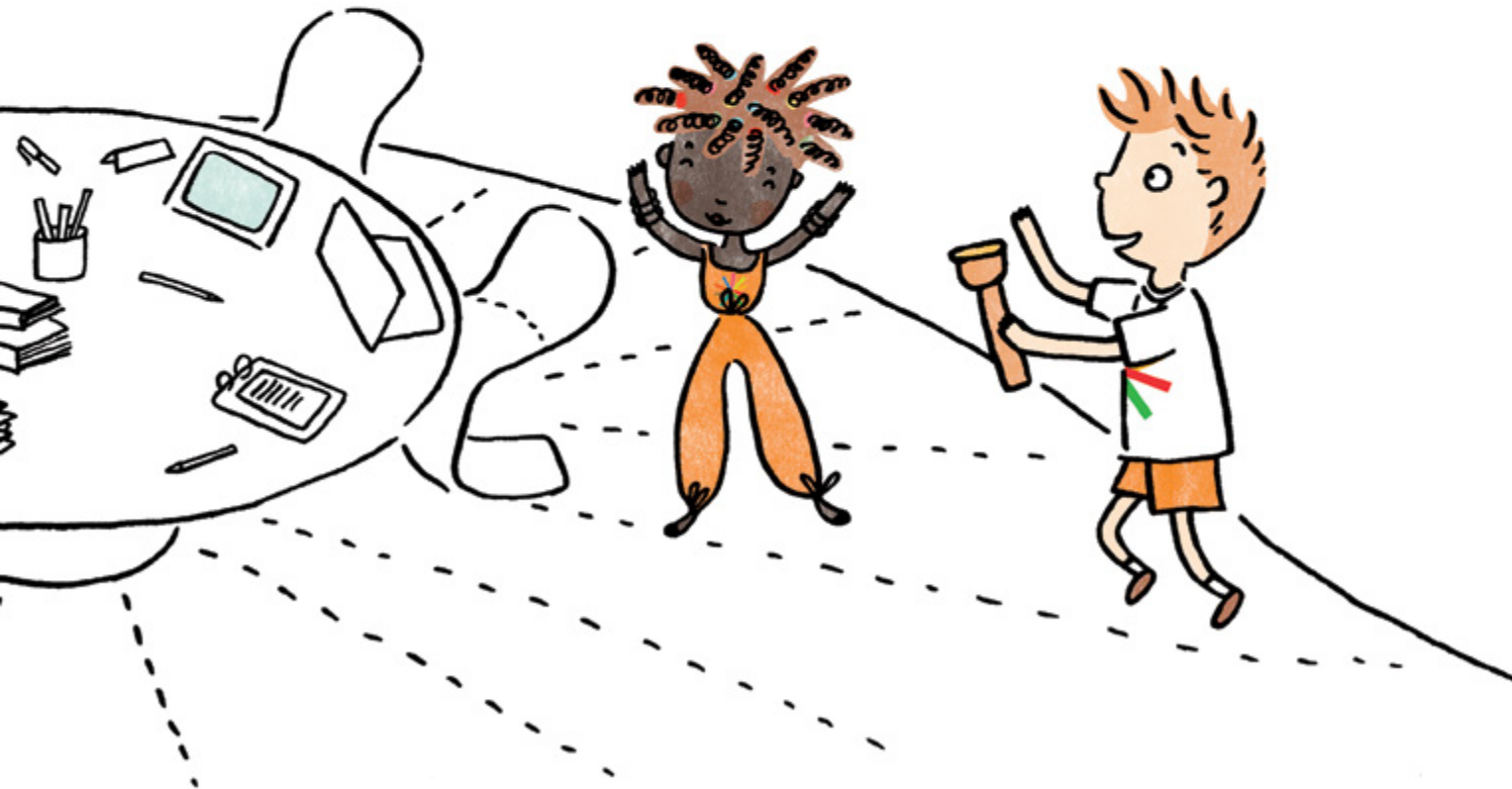
LALO,  
FAKAMALU  
MO E  
TAPIKI.

Mitaki lahi e tau  
gahua ma, COPE!





Haia ma COPE, hoko mai e magaaho  
ke fakapulua mo e kumi foki falu  
**Samupiani** ma ha **COPE** ke  
fakaako atu e falu hagaa ke he tau mafuike.  
Maaga fakamua, Kolima i Mekesikō.



Kua mau nakai ma  
COPE, ko e o fai, ova!

Fitā he mau, ova!

Aeae, teitei nimo  
a Rescue!





Sifu, ko e heigoa e tau laini  
uli i ku nā? Ova.

Ko e *tau maihi  
maʻu ike* a ia. Ova.

Colima, Mexico

Oi, pihia he kitia! Ova.

Nonofo a COPE he Aoga Uushu.

Ko au he  
mohega i luga!

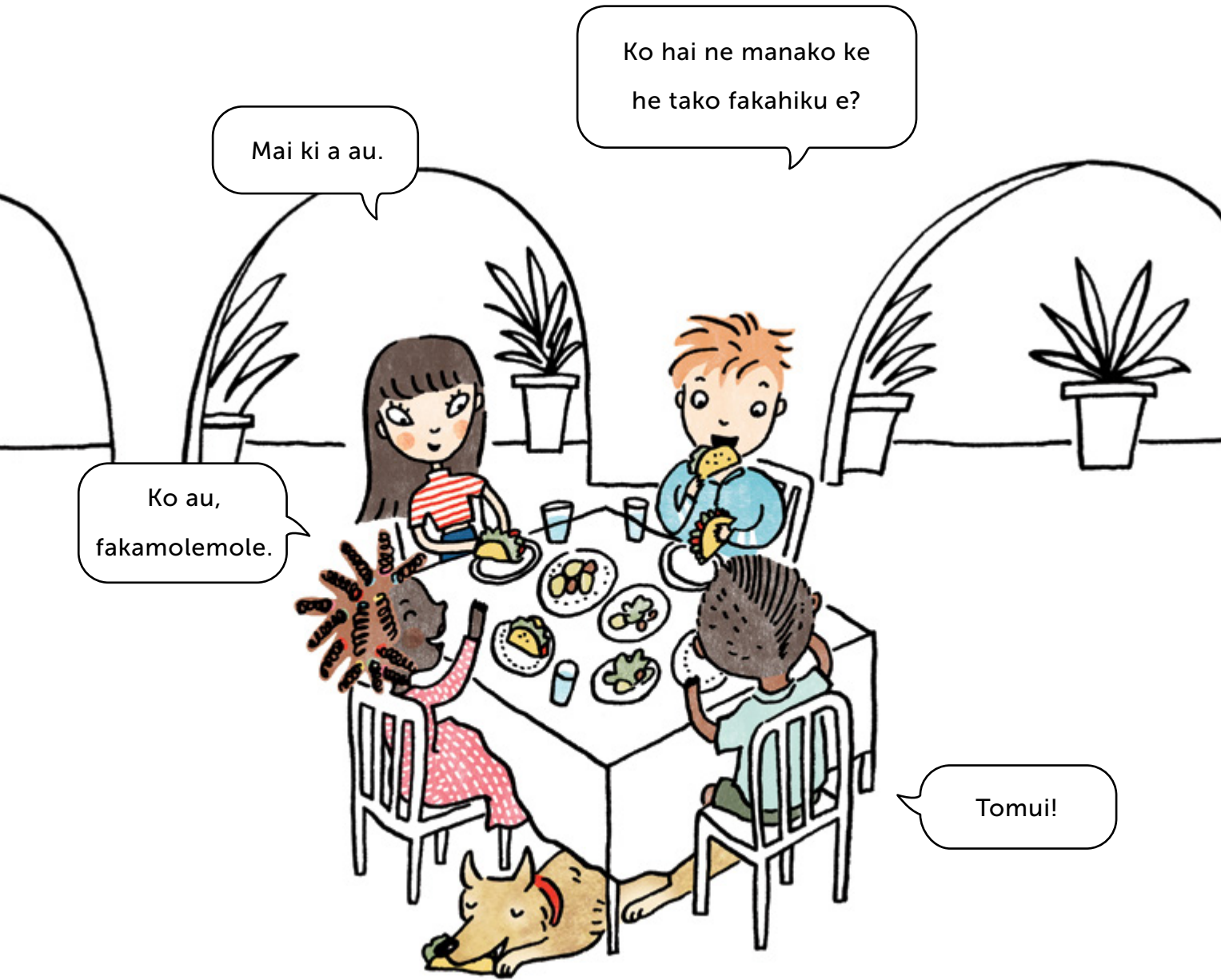
Ko au e patu e!

Ai tupetupe, mohe  
ni ha mena.

Ko au ki lalo!



Ha ne taumafa a lautolu tau kai lolo Mekesikō.



Mai ki a au.

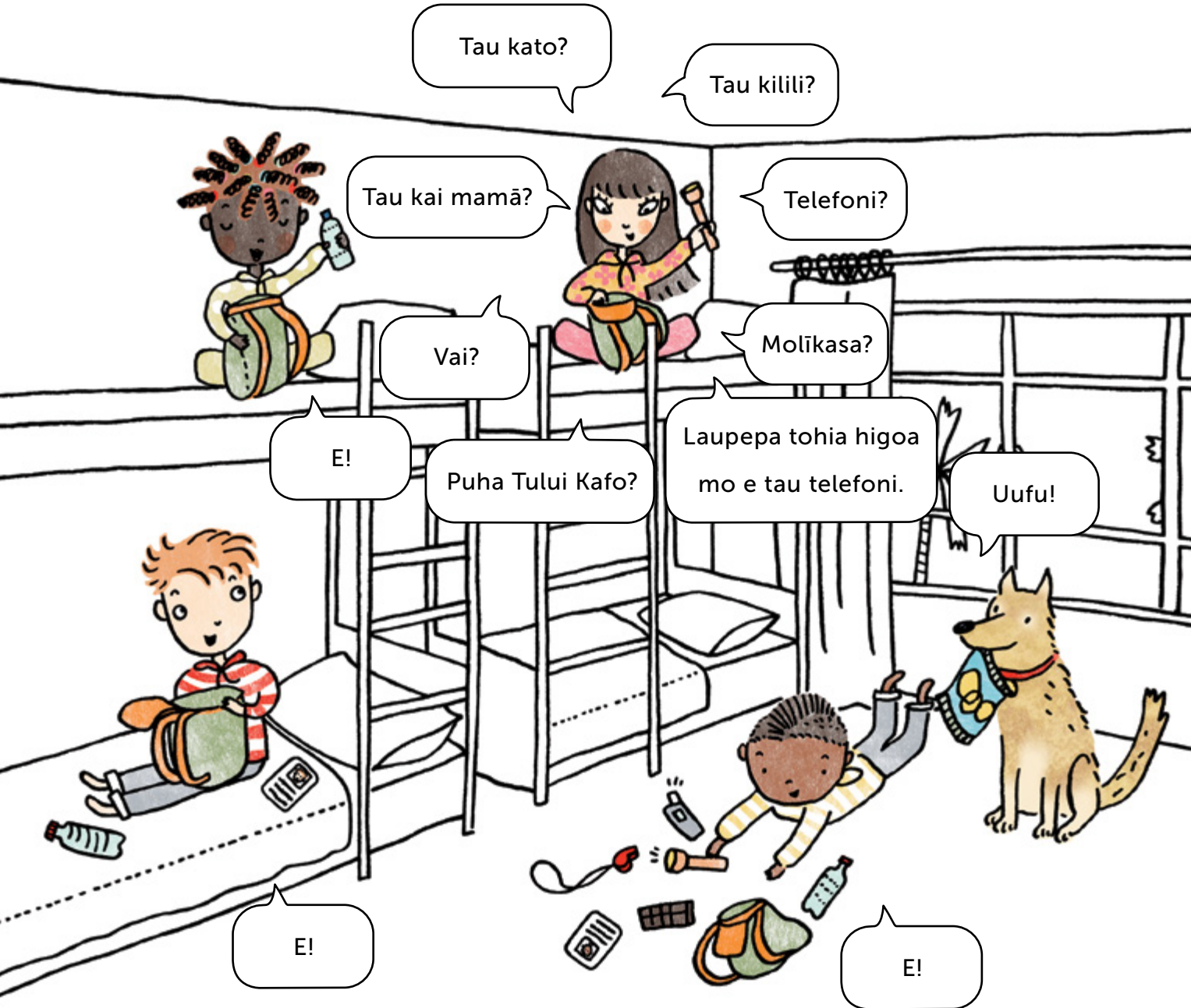
Ko hai ne manako ke  
he tako fakahiku e?

Ko au,  
fakamolemole.

Tomui!

Aala tuai a COPE ke tauteute he

# tau kato maualili maʻuʻike.



Tau kato?

Tau kilili?

Tau kai mamā?

Telefoni?

Vai?

Molīkasa?

E!

Puha Tului Kafo?

Laupepa tohia higoa mo e tau telefoni.

Uufu!

E!

E!

Ha ne fakafiafia a COPE he Aoga Ikiiki.

Fakalofa atu, ko mautolu ko COPE – Candy, Ollie, Ping mo Eddy. Na tupu fakafo e tau mafuike, ke he ha magaaho mo e matakavi. O mai a mautolu ke fakaako a mutolu ke mautali.



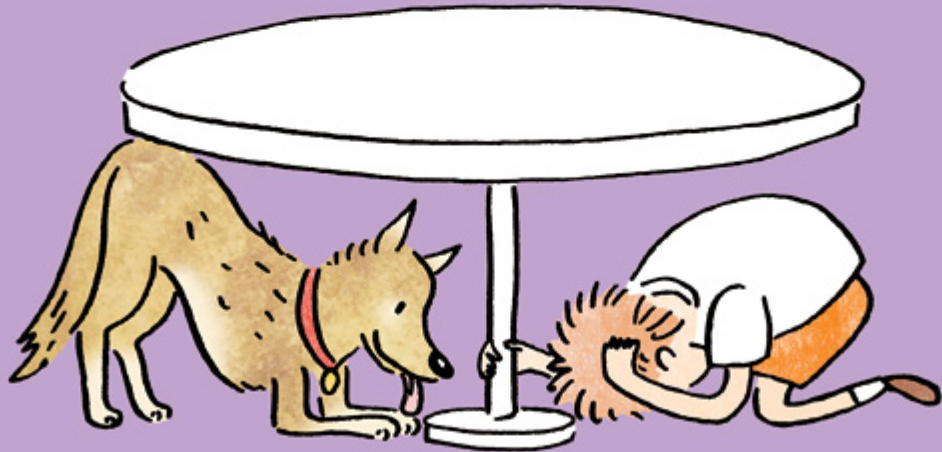
Fanogonogo mai! Manatu...



LALO



FAKAMALU



MO E TAPIKI

Kaeke ko koe i fafo, nofo i fafo, fano ke he taha mena atā.

Nofo hiʻo ki lalo, ti uufi aki e kato po ke pepa e ulu haau.

FAKAMALU



FAKAMALU



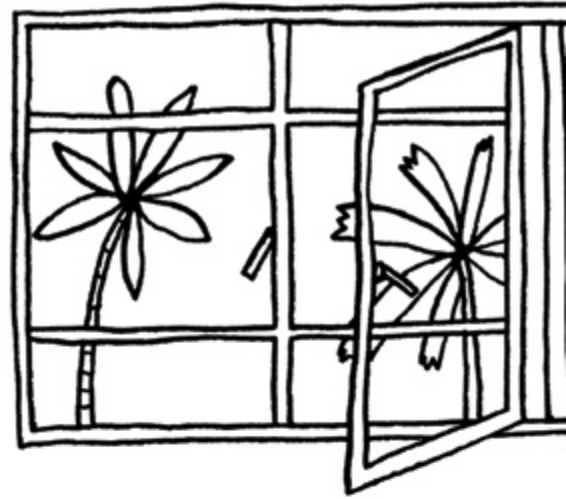
FAKAMALU



FAKAMALU



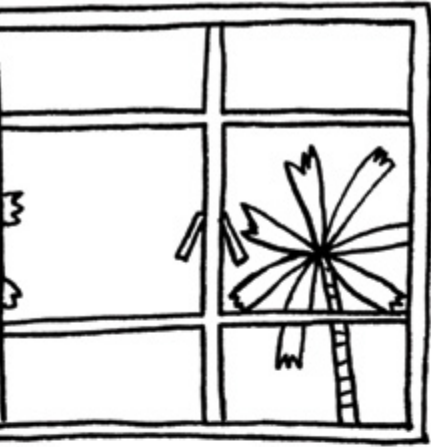
Ha ne fa e pelē a COPE mo e tau fanau he tau feua mafuike.



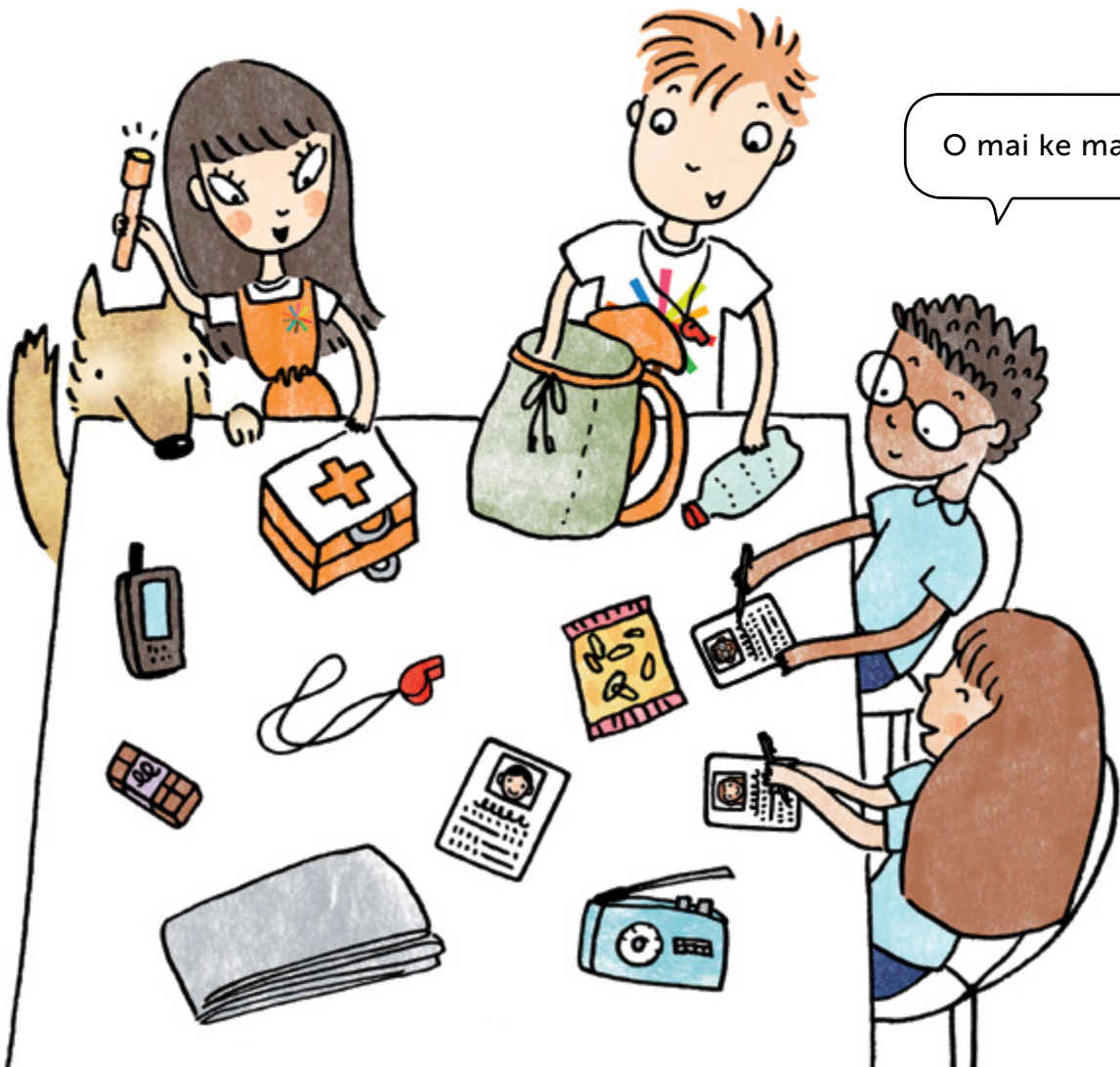
Mua au!

Mitaki e naia!





Fakaako a lautolu ke tukutuku e tau koloa ke he tau kato  
mautali mafuike ...  
mo e tohi e tau higoa mo e tau telefoni ke he laupepa.



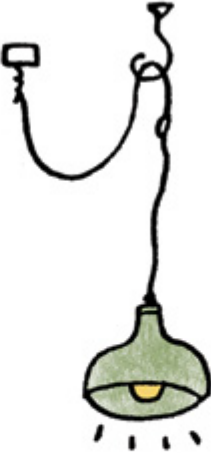
O mai ke mautali!

Fakaako e COPE e tau mena ke taute ke  
*fehola maʻfiti* ka fai lekua fakaofu.



Ha ne fa e onono fakamatafeiga a  
Tupuna Fu mo e Ulu Aoga ke he haohao  
mitaki he Aoga.

Hagahagakelea e molī na he  
alofale mo e fata tukupepa.



Feleveia a COPE mo Lafaele, ko ia 12 tau ne hao mai he taha mafuike.

Tau kuku a Candy mo Lafaele, hihina haana tau mata.

Tupu e lekua he oti e kai laa.

Ko au ne pelē he palasa mo e tau lafu haaku.

Kua *galulu* e tau mena oti mo e uka a mautolu  
ke tutū ki luga. Kua efu katoa e kaina na.

Tagi au he matakutaku ka e fakamafana mai e taokete hāku.

Mole e lulululu ia ti tafepoi a mautolu ki  
kaina ke fakakia e tau mamatua.

Fakaue ni kua

*taute e laua e kaina ha mautolu ke mautali ke he ha mafuike.*

Maagi e tau manamanatuaga tupetupe mo e fiafia he kitia  
e tau mamatua kua hao mo e mafola.



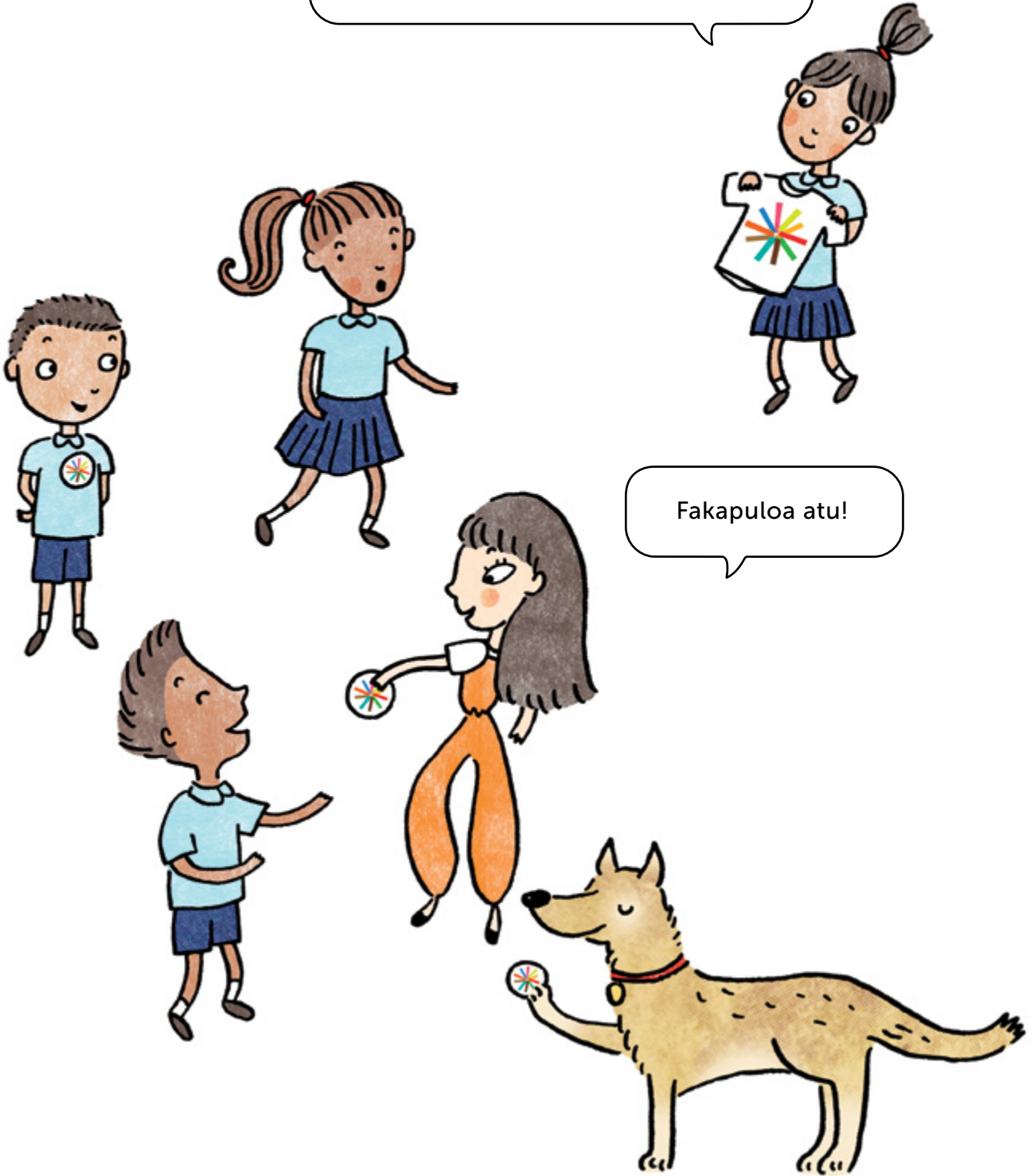




Fakagahua e lautolu e tau Samupiani COPE ke eke mo tau tagata ke fakafifitaki atu a lautolu he maaga ki ai mo e lagomatai e tau fanau ke mautali ka to e mafuike.



Ko e faga e tau Samupiani ha COPE.



Fakapuloa atu!

Kua tohia a COPE ke he tau tohi tala, haia foki he TV, mo e initanete.



O atu a lautolu ke he feua soka, mataafaga, mo e palasa.



O atu a COPE ahiahi e tau kaina takitaha mo e fakaako e tau magaafaoa hagamoo ke he tau uho fekau ma e lekua mafuiki –

**LALO, FAKAMALU mo e TAPIKI!**

COPE!



COPE!

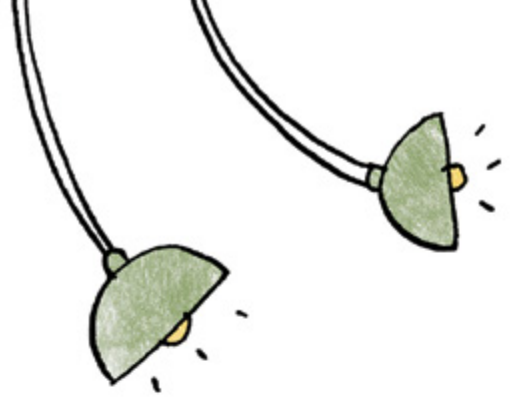
COPE!



Mumui atu e tau tagata kia lautolu he o a lautolu he tau hala. Tagi e tau kilili. Kua eke ni a lautolu mo tau tagata mahuiga i Kolima. Kua mui mai e tau aulo e tau pine mo e tau misi he Matakau COPE.

COPE!

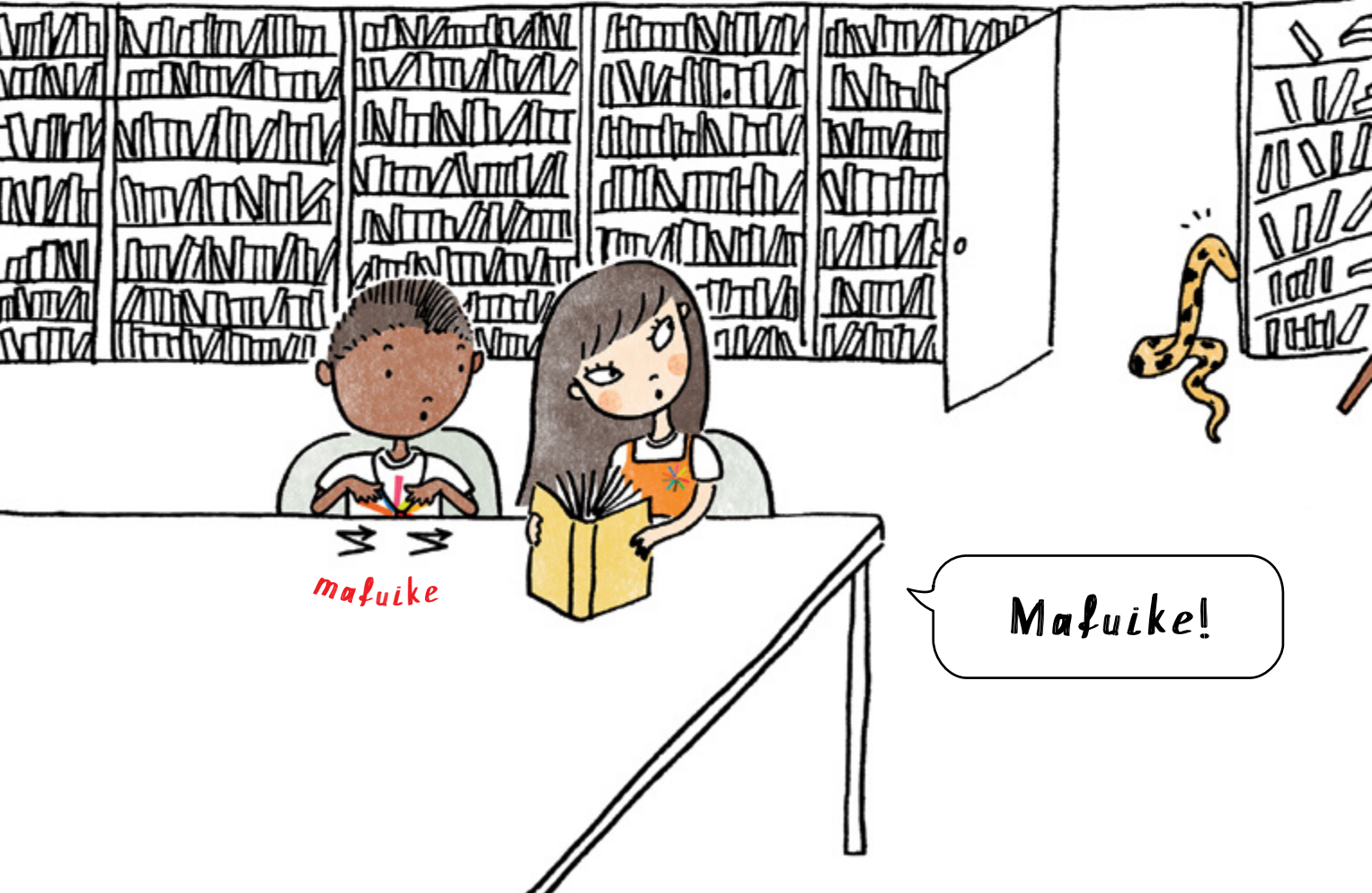




Ha ha ke he Fale Tohi a COPE he aho fakahiku.

Ofolele a Ping kua *lutulutu* e molī.

Kua kehe lahi a Sense, ha ne haha haha haana  
ulu he gutuhala. Ko e ha la?



*maʻu ike*

Maʻu ike!

Tuga ko e peau e kelekele. Lele e tau nofoa he poko; mokulu e tau pepa he tau fata, mavete e tau fakatino he tau kaupā, mavalavala he malona.

20 sekone e galulu to mole.



Oi oi...

Lagomatai...

1

## LALO

Ha ne hu hū a lautolu he tau  
lalo laulau, tapiki ke he  
*tau hui laulau,*  
nonofo fakalogologo mo  
e fakatali.

2

## FAKAMALU



3

## MO E TAPIKI

Magaaho ia, logona e Candy e kilili .  
Fai tagata kua mapita i loto. Veveu  
fakaeneene e Candy moua e tama  
fifine tote kua matakutaku.

Ua tupetupe. Kua hao tei a  
koe. Nofu fakalogologo neke  
*liu ke lulu ʻoki.*

Fakaaue.



Fai minisi he mole, hoko mai a Tupuna Fu.

# *Fua malolō he maʻuʻike ko e 6.5*

ka e fakaauē ni he tote e malona.

Fakamolemole o atu ki fafo he  
hala ma e tau lekua tupu fakafofo.



Haia e tau tagata ne nonofo agaia ki  
lalo mo e uufi e tau ulu ha lautolu.

Fakamamao mo e tau fale ka e  
fakakia neke pakia e falu.

Woof! Woof!



Ofo lahi e taone ko Kolima he mafuike e.

Mavehe atu e Takitaki ke liu fakafoou mo e fakamakamaka ke

*talaga fakamitaki e tau fale ʻoou.*



Nonofo a COPE lagomatai ke fakameā e tau malona i Kolima...  
Mo e lagomatai atu e tau Samupiani foou ha COPE.



To mafola ma COPE!  
Kua mau nakai ke o? Ova!

E, Sifu, Ova!



O mai oti e taone ke fakamavehe a COPE.  
Fiafia lahi a Tupuna Fu ke he haana matakau.

Kua to e laa he hohoko a lautolu ke he mouga Emei. Maine e mataate ha COPE he kitia kua matala e tau fiti.



COPE, hoko tei a tautolu ki kaina. Ova.

## L A U T O L U N E F A I L A G O M A T A I K E H E C O P E



## Martha Keswick

### COPE

#### TAGATA TOHIA

Ko Martha Keswick ko ia ne tohia e tala tu fakaholo mo e fakaliiuaga Max mo Mei ma e tau pepa fakatino, ko e tau veveheaga tala hagamoa ia kia Zhonghuo Mingren ke he tau tagata mahuiga ma e motu ko Saina kua fakakite ke he tau puhala fakakitekite ko e komiki ma e pepa Pangu. Ko e gahua ha Martha ke lata mo e Keswick Foundation ke lagomatai ke he matagahua lekua tupu fakafo i Saina.

Nofo a Martha i Hong Kong mo e haana taane mo e tau fanau toko fa mo e ua e kuli.



## Mariko Jesse

### COPE

#### TAGATA TA FAKATINO

Ko Mariko Jesse ne fakaako he Aoga Central St Martin's ti hokotia foki a ia ko e taha Pulotu Faiaoga. Ko ia ko e pulotu ta fakatino ma e tau pepa ti gahua foki a ia ke he loga e tau fakaholoaga kehekehe he lalolagi mai he tau pepa fakatino ti hoko ke he talaga he tau koloa tuga e tau polu maka.

Nofo a Mariko i San Francisco ti mautali tumau a ia he tau magaaho oti neke to e tau mafuike.



## Timothy Sim

### COPE

#### TAGATA FAKATONUTONU

Ko Dr Timothy Sim kamata gahua ia ko e lagomatai ma e tau momoui tagata, fakamahino ke he lagomatai ma e tau magafaoa. Ko e tau 2008 gahua fakamahino ni a Tim ke tukutuku hifo e tau lekua tupu fakafo he oti e gahua mo e tau fanau, tau magafaoa, tau aoga, tau maaga ne lauia he mafuike Wenchuan he tau 2008. Tohia e ia loga e tau pepa ke he vagahau Saina mo e Peritania.

Ko Tim, ko e tuipulotu ke he aoga Singapore University of Social Sciences.



Mukamuka e pepa ke muitua ki ai mo e moua vave he tau fanau, ko e pepa lata tonu mo totou e lautolu ne nonofo ke he tau matakavi tata ke he tau mouga pa. Ko e tau manatu ne moua mai he tau fanau kua lalafi atu ke he tau aga mo e mahani ma e tau momoui he tau fanau.

— **PROFESSOR LENA DOMINELLI**

Professor in the School of Applied Social Sciences, and Management Board Member in Institute of Hazard, Risk and Resilience, Durham University, UK

Ko e fufuta pepa COPE kua lalaga aulao a lautolu i loto he tala mo e to fiafia lahi tau fanau ka totou, tau fakatino mokoina mo e fakakatuni, mo e tau matapatu fekau kua fakamooli fakasaientisi hagaa ke he tukutukuhifo he tau lekua tupu fakafo, mo e lahi mahaki e lauiaga mo e ufia ke he lalolagi katoa.

— **PROFESSOR GRETCHEN KALONJI**

Dean, Sichuan University – The Hong Kong Polytechnic University Institute for Disaster Management and Reconstruction, China

To mafola e fufuta pepa COPE ke mautali, fakamalolō mo e fakamafanatia e tau fanau ke he lalolagi kua auhia he tau lekua tupu fakafo ke he tau magaaho oti.

— **PROFESSOR JOSHUA MILLER**

Chair, Human Behaviour in the Social Environment Sequence, Smith College School for Social Work, USA

Alaala e fufuta pepa COPE, kehekehe tau lanu, mo e tukutuku ke he puhala fuluola mo e aoga. Faiva mo e fakafofo a lautolu e tau fanau loto he pepa (mua atu ke he gata) ti tatatai foki e tau mahani ha lautolu.

— **PROFESSOR BEN WISNER**

Visiting Professor, Institute for Risk and Disaster Reduction, University College London, UK and Environmental Studies Program, Oberlin College, Oberlin, OH, USA

## Aoga COPE ke he maaga Sichuan.

I lalo hifo ha Tupuna Fu, hokulo e tau fakaakoaga ne moua he Matakau COPE hagamō ke he tau lekua tupu Fakafo mo e tau gahua mautali. Matutaki mo lautolu he tukufenoga ki Kolima, Mekesikō ke fakagahua e tau lotomatala ia ha lautolu.



[www.cope-disaster-champions.com](http://www.cope-disaster-champions.com)

  COPEdisasterchampions

T  
A  
U  
M  
A  
T  
A  
U  
L  
U  
C  
O  
P  
E

- Tau Mafuike
- Tau Lokauta
- Tau Peau Tolotua
- Uha Lolo & To Fakapuke
- Afā
- Tau Uha Tuli
- Tau Peau Vela
- Mouga
- Tau Afi Tolofia
- To Laa



COPE

.....

*Fakakehe a.*

*Mautali mo e Tu Tokaga Mau!*