

2024



REGIONAL
PACIFIC
NDC HUB

Regional Pacific Nationally Determined Contribution Hub

HIGHLIGHT OF ACHIEVEMENTS

PHASE 3: JUNE 2023 - JULY 2024



An aerial photograph of a mangrove forest. A dark, winding waterway cuts through the dense, green vegetation. The trees appear to be mangroves, with some showing bare, tangled branches. The water reflects the surrounding greenery.

EDITORIAL CREDITS

©Shutterstock/Klara Zamourilova Image
©Shutterstock/Erika Bisbocci ©Shutterstock/Rafayil Abbasov &
©Shutterstock/Robert Szymanski Images
© Regan Moses & ©Unsplash/Alec Douglas

The remaining images have been provided through the Regional Pacific NDC.

Managing Editor: Rupeni Vatubuli

Research: Regional Pacific Nationally Determined Contribution Hub

Commissioned by: Regional Pacific Nationally Determined Contribution Hub

Designer: Regional Pacific NDC Hub

This publication was co-funded by the European Union and the German Federal Ministry for Economic Cooperation and Development (BMZ), New Zealand's Ministry for Foreign Affairs and Trade (MFAT) and Australia's Department of Foreign Affairs and Trade (DFAT). Its contents are the sole responsibility of the Deutsche Gesellschaft für Internationale Zusammenarbeit (GIZ) and do not necessarily reflect the views of the European Union, BMZ, MFAT and DFAT.

Responsible: Iris Cordelia Rotzoll, iris-cordelia.rotzoll@giz.de



Kindly Supported by:



In Partnership with:



In Contribution to:



MESSAGE FROM THE PROJECT MANAGER

It is an utmost pleasure to celebrate the successful completion of Phase 3 of our journey with the Pacific Island Countries (PICs) in the Regional Pacific NDC Hub. This momentous occasion is a testament to the unwavering dedication, resilience, and collaboration of the Pacific Island Countries to fight Climate Change. Together, we have made significant strides towards our shared vision of a sustainable, low-carbon, and climate-resilient Pacific.

Supporting the Pacific Island Countries in their climate action endeavours has been at the heart of our mission. Through our concerted efforts and the exemplary coordination among the NDC Hub's partners—GIZ, GGGI, SPREP, and SPC—we have made remarkable progress in advancing in the design and the implementation of the Nationally Determined Contributions (NDCs).

Firstly, together with the PICs' representatives, we have successfully updated and developed investment plans for six NDCs. These updates are not just documents. They are blueprints for a resilient future, ensuring that PICs are equipped with robust and actionable strategies to combat climate change. Together we have conducted four coherence reviews of national policies, aligning them with regional and international climate frameworks. These alignments are crucial in enhancing policy effectiveness and ensuring that our actions are synchronized with global climate goals.

The NDC Hub team has executed together with the Focal Points from the PICs eleven targeted activities aimed at supporting the implementation of NDCs. These activities have driven tangible progress, translating the PICs' plans into actions that make a real difference on the ground. We have furthermore worked together on seven Measurement, Reporting, and Verification (MRV) plans.

The success of Phase 3 would not have been possible without the excellent coordination between the NDC Hubs partners—GIZ, GGGI, SPREP, and SPC, as well as with the NDC Partnership. The dedication and expertise of the partners have been pivotal in driving our joint achievements. We have demonstrated the power of partnership and the profound impact of collective action.

All this would not have been possible without the most generous support from our partners, the German Federal Ministry for Economic Development and Cooperation (BMZ), the Australian Government Department of Foreign Affairs and Trade (DFAT), the New Zealand Ministry of Foreign Affairs and Trade (MFAT) and the European Union (EU). We are utmost grateful for their partnering with us to the benefit of the PICs' support and actions.

Let us remember that our work is more than a professional duty, it is a commitment to the people of the Pacific. It is about securing a sustainable future for our communities, protecting our natural and cultural heritage, and ensuring that no one is left behind in the face of climate change.

Vinaka vakalevu and thank you

Sincerely,

Iris Cordelia-Rotzoll

Project Manager

Regional Pacific NDC Hub | GIZ



CONTENTS

Introduction	3
Our Story	4
Note from the Project Manager	7
Pacific NDCs	8
How the NDC Hub Works in Phase 3	10
NDC Hub Achievements	11
• Marshall Islands Improving Data Collection for MRV for NDC Reporting	13
• Cook Islands Establishes a Robust MRV System	14
• Tonga Conducts a National Forestry Inventory	16
• Marshall Islands Review of the National Energy Policy & Energy Action Plan	17
• Fiji's Development and Compliance Readiness for Climate Risk Disclosure	19
• Vanuatu's Implementation of National Vulnerability Assessment Framework	20
• Solomon Islands Full LEDS Development	22
NDC Hub Events	24
Gender Equality and Social Inclusion	26
Lessons Learnt	28



INTRODUCTION

The Regional Pacific Nationally Determined Contributions Hub (NDC Hub) supports 14 Pacific Island Countries to implement and enhance their Nationally Determined Contribution under the COP 21 Paris Agreement¹.

The NDC Hub works directly with one nominated Focal Point in each country which is a high-level government official from the ministry responsible for climate change.

The NDC Hub is guided by a Steering Committee consisting of one Focal Point from each Pacific Sub-region (Polynesia, Micronesia, and Melanesia), as well as Fiji as the host country.

The NDC Hub is grateful to be funded by the European Union, and the governments of Germany, New Zealand, and Australia.

Support to Pacific Island Countries is implemented through a partnership of the Deutsche Gesellschaft für Internationale Zusammenarbeit (GIZ) GmbH, The Pacific Community (SPC), the Secretariat of the Pacific Regional Environment Programme (SPREP), and the Global Green Growth Institute (GGGI).

These entities constitute the NDC Hub Implementation Unit. The NDC Hub works in contribution to the NDC Partnership's Support Unit (NDCP SU).



1. The 21st Conference of the Parties under the United Nations Framework Convention on Climate Change, held in Paris, 2015.

OUR STORY

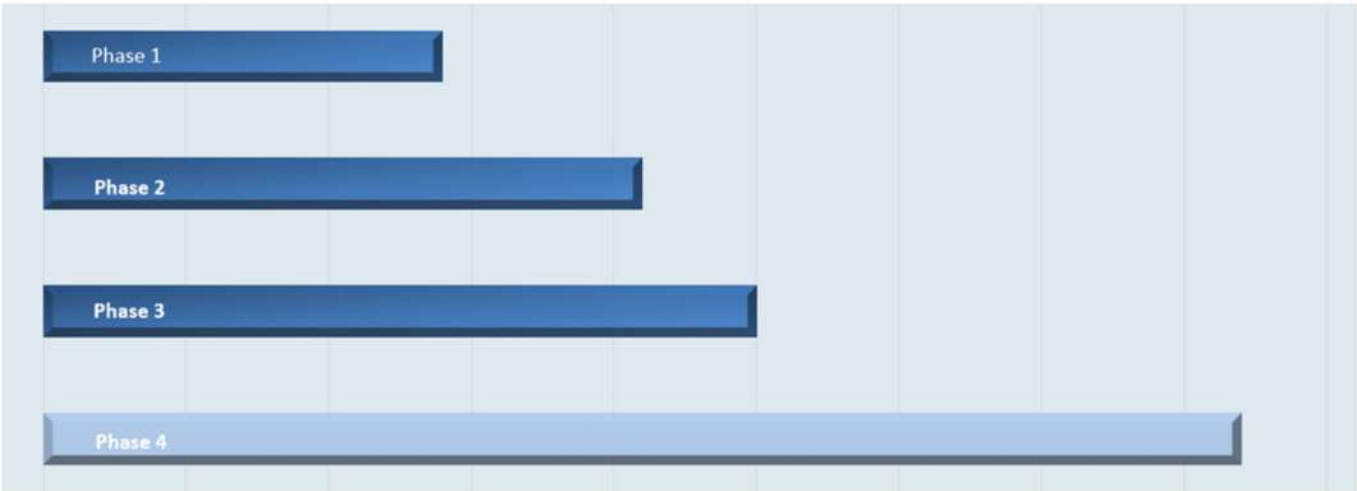
Following the 21st Conference of the Parties (COP) meeting, under the United Nations Framework Convention on Climate Change (UNFCCC) meeting in Paris, 2015, countries agreed to develop Nationally Determined Contributions (NDCs) outlining increasingly ambitious plans to mitigate and adapt to climate change.

Recognizing the urgency of climate action, Pacific leaders called for a platform to support them in enhancing, implementing, and financing their NDCs. Based on this, Fiji's former Prime Minister, Hon. Voreqe Bainimarama, officially launched the Regional Pacific Nationally Determined Contribution Hub (NDC Hub) at the 23rd COP in Bonn, Germany.

Since 2017, the NDC Hub has continued to be actively endorsed by the Pacific. Based on a demand-driven approach, the NDC Hub works to serve each Pacific Island Country's (PIC's) highest need for NDC-related support.

The NDC Hub works directly with Focal Points from each Pacific government and is guided by a Steering Committee represented by each Pacific Sub-region, which ensures the NDC Hub is truly owned and shaped by the Pacific.

Growth of the NDC Hub



PHASE 1

DEC 2018 - SEPT 2020

14 Country Requests

2.2 Million EUR Funding

PHASE 2

MARCH 2020 - JUNE 2022

21 Country Requests

6.1 Million EUR Funding

PHASE 3

JULY 2022 - SEPT 2024

27 Country Requests

6.85 Million EUR Funding

PHASE 4

SEPT 2024 - SEPT 2027

42 Country Requests

9 Million EUR Funding

“

*The NDC Hub is
for the Pacific, and
by the Pacific*



Participants of the NDC Hub's annual Focal Point Meeting, August 30th 2023.



PACIFIC NDCs

This represents 27 Country Requests implemented during the NDC Hub's third project phase, from **July 2022 to September 2024**. During the NDC Hub's first and second project phases, the NDC Hub supported a combined 35 country requests, which are not depicted on this page.



COOK ISLANDS

- Establishing a robust measurement, reporting and verification system and providing capacity development



FEDERATED STATES OF MICRONESIA

- Launching and Implementation of the NDC
- Tourism NDC Action Plan



FIJI ISLANDS

- Development and Compliance Readiness for Fiji's 'Climate Risk Disclosure' Legislative framework
- Implementation Work for the Climate Change Act



KIRIBATI

- Capacity building in assessment, design, and construction of low energy/carbon buildings
- Strengthening and Expanding the Standards and Labelling Programme for Appliances in Kiribati



MARSHALL ISLANDS

- Improving Data Collection for Monitoring, Reporting and Verification for NDC reporting
- Coherence review of RMI National Energy Policy & Energy Action Plan (NEPAP) 2015 – 2025



NAURU

- Capacity building for vehicle shredding and exporting
- Twin Chamber Septic System for Households



NIUE

- Establishing a measurement, reporting and verification system in Niue
- Completion of Niue Updated NDC



PALAU

- Review and update of Palau's INDC 2015



PAPUA NEW GUINEA

- Strengthening PNG's effective framework for Land use Governance, Reporting and Monitoring
- Strengthening PNG's effective framework for sustainable coffee development



SAMOA

- Energy Efficiency Program for Tourism Sector
- Agroforestry Promotion Program



SOLOMON ISLANDS

- NDC Investment Plan
- Developing the Solomon Islands Long-Term Low Emissions Development Strategy
- A Carbon Budget Roadmap



TONGA

- Measurement, reporting and verification for Tonga's greenhouse gas emissions system
- National Forest Inventory



TUVALU

- NDC Update • Development of Tuvalu's greenhouse gas Data Repository

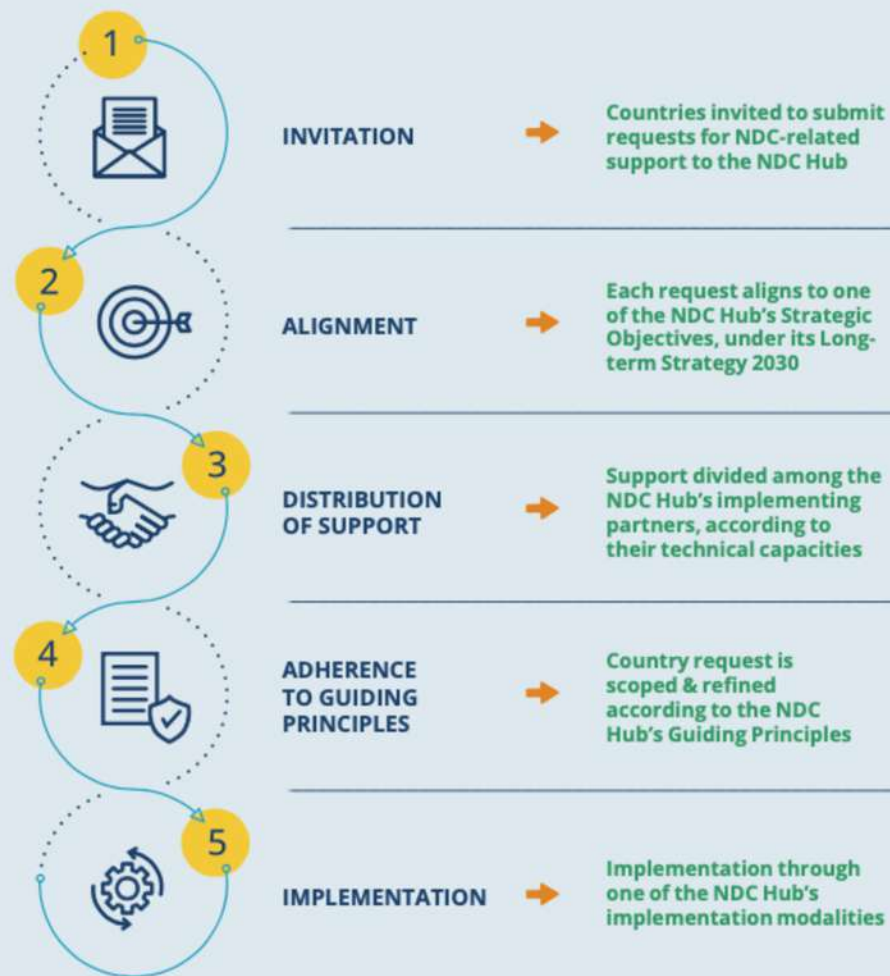


VANUATU

- National Vulnerability Assessment Framework (NVAF)
- Biogas installation at rural educational institution in Vanuatu
- NDC Investment Strategy (including project pipeline)

HOW THE NDC HUB WORKS IN PHASE 3

At the beginning of each phase, the NDC Hub invites Pacific Island Countries (PICs) to submit demand-driven requests for NDC-related support following the process outlined below



REGIONAL PACIFIC NDC HUB ACHIEVEMENTS FOR PHASE 3

COUNTRY REQUESTS SUPPORTING NDC IMPLEMENTATION

6 NDC Updates & Implementation Plans



4 Coherence Review of National Policy



11 Activities Supporting NDC Implementation



7 Measurement, Reporting and Verification Plans Support



CAPACITY DEVELOPMENT

9 Training & Events
8 Talanoa Sessions



27 Journalists Trained in Climate Change Communications



STRATEGIC OBJECTIVES UNDER THE NDC HUB'S LONG TERM STRATEGY 2023



» Improved NDC Planning, Policy, Strategy, and Legislation



» Strengthened Enabling Environment for NDC Implementation



» Accelerated NDC Action and Project/Program Implementation



» Enhanced NDC Measurement, Reporting, and Verification and Transparency of Climate Action

NDC HUB IMPLEMENTATION MODALITIES



» Direct implementation by implementing partner



» Implementation by technical divisions within the partner organization



» Contracting an external, technical expert, with a preference for local and regional experts

ing

—CCCI—Legislation

y Supplier

suppliers (PS)

ulture

rms

*Improved NDC Planning, Policy,
Strategy, and Legislation*

MARSHALL ISLANDS IMPROVING DATA COLLECTION FOR MONITORING, REPORTING AND VERIFICATION FOR NDC REPORTING



Majuro, the capital of the Republic of the Marshall Islands

This initiative aims to support a sustainable and efficient transport transition in the Marshall Islands, aligning with the country's NDC commitments under the 2050 Climate Strategy, "Lighting the Way" (Tile Til Eo). Nationally, this effort complements the goal of "Building a sound infrastructure that provides energy, environmental, infrastructure, and transportation security for all atolls," as outlined in topic 8 of the RMI National Strategic Plan 2015-2018 (NSP).

The Marshall Islands has committed to a significant reduction in transport-related greenhouse gas emissions as part of its NDC targets. Specifically, the goal is to achieve a 27% reduction in total domestic transport GHG emissions below 2010 levels by 2030.

By setting up MRV systems, the initiative not only aids in monitoring and implementing these ambitious sector goals but also supports broader environmental and infrastructure security across all atolls. This strategic approach ensures that the Marshall Islands can meet its climate commitments, foster sustainable development, and transition towards a low-carbon future, ultimately contributing to global efforts to combat climate change.

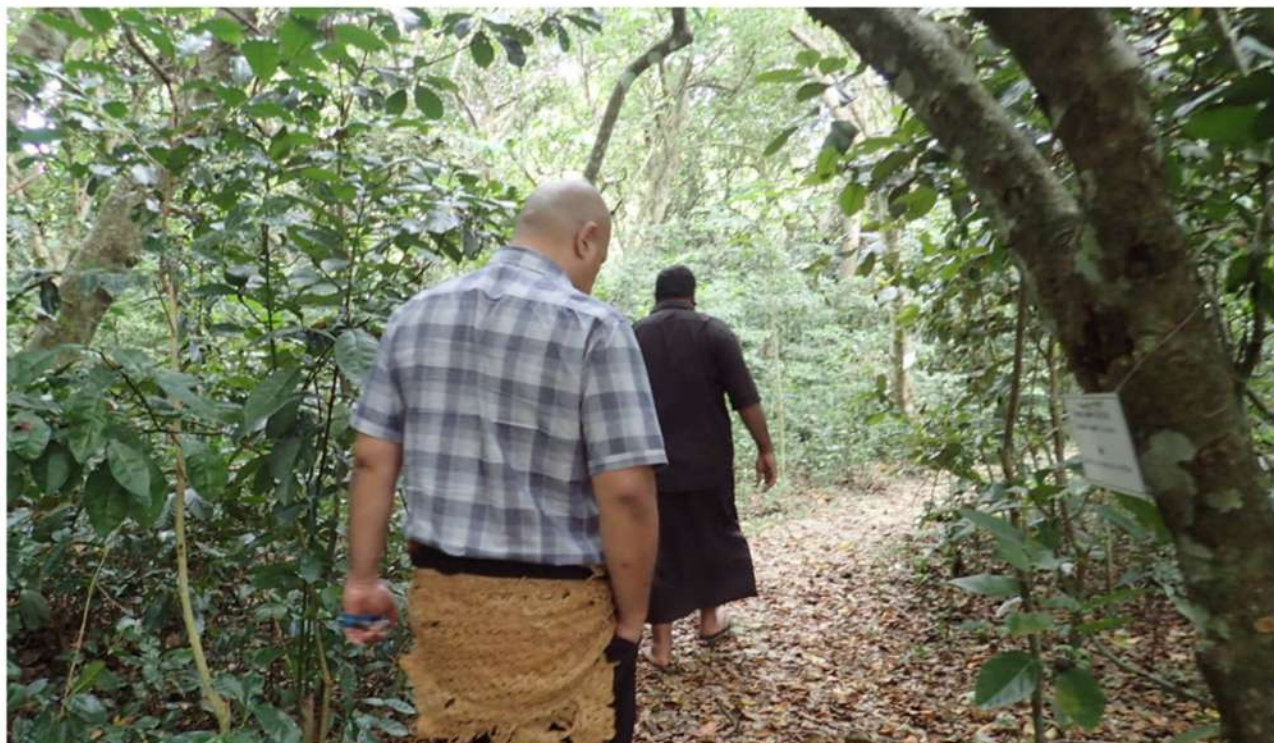
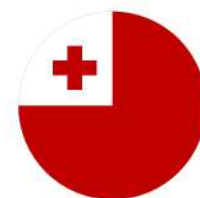
"Transitioning to a low-carbon transport system is not just an environmental imperative for the Marshall Islands but a pathway to sustainable development and resilience for all our atolls."

Ms Angeline C. Heine-Reimers, Director of the National Energy Office, Marshall Islands

A photograph of two women in a professional setting. The woman on the left, wearing a blue and red patterned top, is looking down at a laptop. The woman on the right, wearing a red and orange patterned top, is pointing at the laptop screen. They are sitting at a table with various documents and a laptop. The background is dark with some greenery.

*Strengthened Enabling Environment
for NDC Implementation*

TONGA CONDUCTS A NATIONAL FOREST INVENTORY



Toloa Rainforest Reserve (Photo: Seacology)

This initiative aims to support Tonga in conducting a comprehensive National Forest Inventory, building on the foundation laid by the FAO's Technical Support for National Forestry Inventory completed in 2022. The inventory is crucial for Tonga's Nationally Determined Contribution (NDC) under the Paris Agreement, providing essential baseline data needed to set realistic GHG emission targets for the 2025 NDC.

By having detailed forest data, Tonga can make informed decisions regarding forest management and conservation, identifying priority areas for intervention. The inventory will enable effective monitoring of forest health and changes over time, supporting sustainable management practices that are vital for biodiversity conservation and environmental health.

Furthermore, the National Forest Inventory will enhance Tonga's capacity for accurate and transparent reporting to international bodies, improving its ability to attract support and funding for climate action.

This initiative is a key step towards achieving Tonga's climate and development goals, ensuring a sustainable and resilient future for its people.

"Conducting a comprehensive National Forest Inventory is pivotal for Tonga's climate action and sustainable development. This initiative not only provides the critical data needed to set and achieve our GHG emission targets but also empowers us to make informed decisions for the conservation and sustainable management of our precious forest resources. Through this effort, we are paving the way for a resilient and sustainable future for all Tongans."

Samisoni Tupou, Climate Change Technical Adaptation Officer, Tonga.



COOK ISLANDS ESTABLISHES A ROBUST MRV SYSTEM



Aitutaki, in Cook Islands

Monitoring, Reporting, and Verification (MRV) systems play a key role under the Paris Agreement, enabling countries to accurately track greenhouse gas (GHG) emissions at both national and sub-national levels. This information informs countries on their progress towards the fulfillment of their Nationally Determined Contributions (NDCs) while strengthening climate transparency among other Parties to the Paris Agreement.

The MRV systems being developed cover different sectors tailored to the specific needs of each country, including transport and electricity. The technical assistance provided includes awareness raising, stakeholder consultations, capacity development and establishment of institutional arrangements.

The long-term intent was to update Cook Island's NDC including enhancement of the integrated MRV tool to cover other potential mitigation sectors to increase ambition and action by carrying out a detailed assessment of land transport, waste, forestry, agriculture and other potentially high impact sectors that can contribute to low-carbon development.

"Establishing a robust MRV system in the Cook Islands is crucial for accurately tracking our progress in reducing GHG emissions, ensuring we meet our NDC commitments and contribute transparently to global climate action under the Paris Agreement."

**Celine Dyer, Climate Change Coordinator,
Cook Islands**



MARSHALL ISLANDS REVIEW OF THE NATIONAL ENERGY POLICY & ENERGY ACTION PLAN (NEPAP)



Consultation Workshop Mitigation Working Group (Photo: SPC)

The project requires Technical Assistance to the National Energy Office to conduct a comprehensive coherence review of the National Energy Policy and Action Plan (NEPAP). This review will align NEPAP's current actions with sectoral goals, objectives, and indicators, as well as linkages to the Marshall Islands Electricity Roadmap, Energy Bill, NDC targets, and relevant global and regional frameworks like the FRDP, SDGs, and the Paris Agreement.

The review will also assess the status and achievement of the 'planned activities' in NEPAP. The findings and recommendations from this assessment will inform the update of NEPAP to reflect current progress and future needs. Further evaluation, including third-party reviews and robust monitoring procedures, along with stakeholder consultations, is necessary to ensure a comprehensive and updated National Energy Policy & Action Plan.

Ultimately, the updated NEPAP must be aligned with the Nationally Determined Contributions (NDC), the RMI Electricity Roadmap, and the Energy Bill. This alignment will ensure coherent and effective policy implementation, advancing the Marshall Islands' energy and climate goals in line with both national priorities and international commitments.

"From our 2009 National Energy Policy, one of the guiding principles of the RMI Energy Sector is Many Partners, One Team. The collaboration between the NDC Hub and the PCREEE to review, revise and update the 2016 RMI National Energy Policy & Energy Action Plan is one of many examples."

***Ms Angeline C. Heine-Reimers, Director
of the National Energy Office, Marshall
Islands***



*Accelerated NDC Action and
Project/Program Implementation*

FIJI'S DEVELOPMENT AND COMPLIANCE READINESS FOR 'CLIMATE RISK DISCLOSURE'



Consultation workshop on Fiji's draft Climate Risk Disclosure Guidelines

The Fiji Climate Change division, in partnership with the Regional Pacific NDC Hub and Bankers Without Boundaries, recently achieved a significant milestone with their consultation workshop on Fiji's draft Climate Risk Disclosure Guidelines. This workshop gathered diverse stakeholders from the financial sector to provide input on these pioneering guidelines, marking a crucial step forward for climate resilience in the Pacific region.

Filimone Tuivanualevu, Acting Director of Fiji's Climate Change division, emphasized the workshop's importance as a pivotal moment in Fiji's climate action efforts. By fostering collaboration and dialogue, Fiji is not only setting the stage for effective climate risk disclosures but also empowering communities and businesses to adapt and prosper amidst climate challenges.

Overall, Fiji's initiative underscores a concerted effort to integrate climate considerations into financial practices, reflecting a proactive stance in addressing climate change impacts. The workshop's success highlights Fiji's leadership in climate resilience planning and sets a precedent for collaborative action across the Pacific region to build a sustainable future amid environmental challenges.

"Through collaborative efforts and dynamic dialogue, Fiji is pioneering climate risk disclosure guidelines that empower our communities and businesses to thrive amidst climate challenges. This initiative not only strengthens our resilience but also sets a precedent for regional climate action, ensuring a sustainable future for all."

Filimone Tuivanualevu, Former Acting Climate Change Director, Fiji.

VANUATU'S IMPLEMENTATION OF NATIONAL VULNERABILITY ASSESSMENT FRAMEWORK (NVAF)



Port Vila, Vanuatu

This initiative focuses on enhancing Vanuatu's National Adaptation Fund by addressing key areas such as system review, data tool enhancement, stakeholder engagement, and capacity building. Initially, it will conduct a comprehensive assessment of existing NVAF systems and data collection tools to identify strengths and areas needing improvement. Subsequently, the project aims to establish MoUs among relevant government and non-government entities to facilitate efficient data sharing, essential for informed decision-making and coordinated climate resilience efforts.

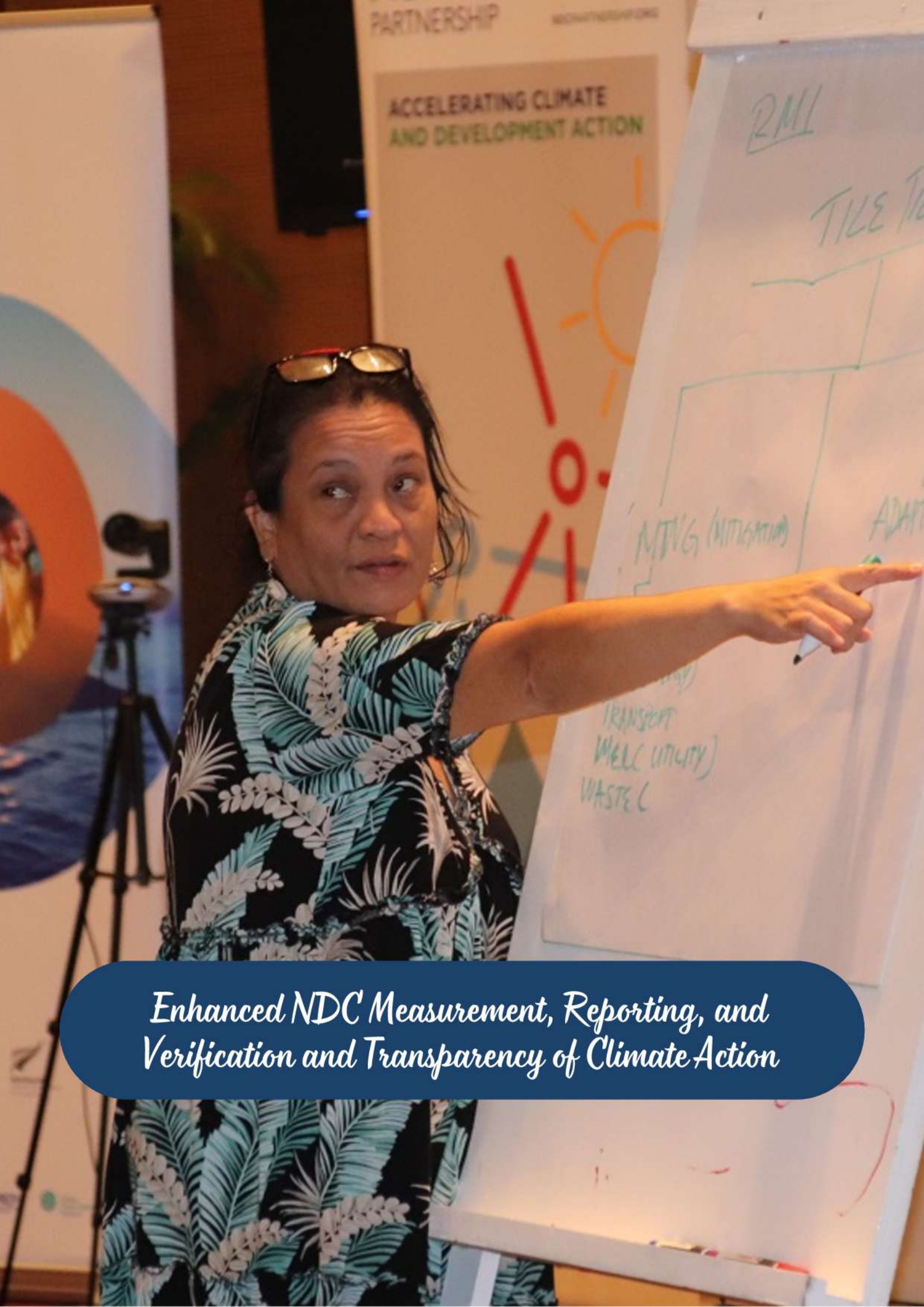
Furthermore, the initiative will document stakeholder needs and capabilities, proposing design features for a centralized NVAF system and its accompanying data collection tools. This includes drafting operational procedures to streamline data management and enhance the effectiveness of adaptation strategies tailored to Vanuatu's unique environmental and socio-economic context.

Lastly, the project will prioritize capacity building by delivering training sessions to stakeholders and partners. These sessions are designed to empower local actors with the skills and knowledge needed to effectively utilize NVAF systems, ensuring sustainable and locally-driven climate adaptation initiatives across Vanuatu.

"Building resilience starts with understanding and harnessing local knowledge and capabilities, ensuring that our efforts are not only effective but also sustainable for the future generations."

**Nelson Kalo, Acting Director,
Department of Climate Change, Vanuatu**





Enhanced NDC Measurement, Reporting, and Verification and Transparency of Climate Action

SOLOMON ISLANDS FULL LEDS DEVELOPMENT



Solomon Islands Port (Photo: Solomon Islands Ports Authority)

This Long-Term Low Emissions Development Strategy (LEDS) provides a vision and a pathway for Solomon Islands to achieve its national economic, environmental, and social goals over the long term. It is developed from within Solomon Islands, for the benefits for Solomon Islanders. This document also meets the Paris Agreement obligations on Solomon Islands to formulate and communicate long-term low greenhouse gas (GHG) emission development strategies.

This LEDS provides a pathway towards a low emissions, equitable and resilient development vision for Solomon Islands by 2050. The pathway is comprised of a 2050 vision, emissions pathway, and steps. The steps move Solomon Islands from a BAU pathway to the low emissions, equitable growth and resilience pathway.

The Solomon Islands LEDS is developed primarily using the publicly available data.

As further data becomes available, and national circumstances change, the steps towards a low emissions, equitable growth and resilient future may or will change too. Further updates to the Solomon Islands LEDS may be made as circumstances change.

"The Solomon Islands' LEDS embodies our vision for a sustainable, equitable, and resilient future. It charts a transformative pathway to 2050, moving from business-as-usual to a low emissions and inclusive growth trajectory. As we adapt to changing circumstances and new data, our commitment to achieving national economic, environmental, and social goals remains steadfast, ensuring a brighter future for all Solomon Islanders."

Henry Tufa, Deputy Director of Climate Change, Solomon Islands



NDC HUB EVENTS

The NDC Hub engages Focal Points regularly through trainings and events. Since the start of the third project phase in July 2022, the NDC Hub has hosted and engaged in the following

exchanges, as of April 2023. As we come to the end of the phase we take a look back at the events that have been hosted by the Regional Pacific NDC Hub.



Participant in the NDC Hub's Annual Focal Point meeting



Participants in the Media Dialogue

ANNUAL FOCAL POINT MEETING, SIGATOKA, FIJI
August 28th – September 1st, 2023

“

I learnt a lot from the Focal Point meeting, especially about best practices for NDC implementation, mitigation and adaptation. Based on this learning, I have tried to link adaptation and mitigation priorities, and leverage the synergies between both, in my daily work.”

Participant in the NDC Hub's Annual Focal Point meeting

GLOBAL GREEN GROWTH WEEK, VIRTUAL SIDE EVENT
October 1st - October 31st 2023

MEDIA DIALOGUE, SIGATOKA, FIJI
August 31st – September 1st, 2023

“

After the great training with the NDC Hub we have tried a different approach to our writing, having both men and women, boys and girls speak out about the impacts of climate change in their lives.”

Pacific journalist, participant in the Media Dialogue



*Aliti Vunisea, Gender Specialist deliver **Gender and Social Inclusion Training** Nov, 2023*



Vanda Faasoa-Chan Ting, Technical Adviser for the NDC Hub at SPREP

60TH SESSIONS OF THE SUBSIDIARY BODY FOR SCIENTIFIC AND TECHNOLOGICAL ADVICE (SB60), BONN, GERMANY
June 3rd - 13th, 2024

COMMUNICATION SUPPORT, PNG
July 1st - 4th, 2024

SWIPE UP FOR CHANGE, YOUTH EVENT, SUVA, FIJI
March 12th - 15th, 2024

COMMUNICATION SUPPORT, VANAUTU
July 1st - 4th, 2024

GENDER AND SOCIAL INCLUSION TRAINING
November 10th, 2023

CAPACITY DEVELOPMENT ON PROJECT CONCEPT NOTE AND FINANCING NDCS - DEEP DIVING INTO CLIMATE FINANCE, VIRTUAL TRAINING
May 29th, 2024

COP 28, DUBAI, UNITED ARAB EMIRATES. AOSIS MITIGATION NEGOTIATING TEAM
November 30th - December 12th, 2023

“

The determination of the self-driven NDC Focal Points at the UNFCCC COP28 negotiations truly reflects their commitment to the amplification of our Pacific voices, to ensure the increase in global temperature does not exceed 1.5°C, because the survival and existence of our Pacific Region is of paramount importance.”



Desiree Fruean, Participant at the NDC Hub's Swipe up for change, Youth Event 2024

GENDER EQUALITY AND SOCIAL INCLUSION



The **#SwipeUp4Change** workshop, held from 11th to 15th of March, 2023 in Suva, was hailed as a success as it created more awareness on National Determined Contributions. Bringing together a diverse group of climate advocates, content creators, and stakeholders, the workshop ignited powerful conversations, knowledge-sharing sessions, and practical initiatives aimed at driving positive change for our Pacific Island Nations.

From engaging discussions on the urgent need for action against climate change to insightful presentations on the role of National Determined Contributions (NDCs) in shaping our future, the workshop served as a catalyst for inspiration and action. Participants delved deep into the complexities of climate issues, recognizing the immediate impacts faced by communities and the imperative for unified global action.

The culmination of the workshop saw an impressive collective audience reach of 791,972 on Instagram and 959,012 on TikTok, demonstrating the power of social media as a tool for raising awareness and mobilizing action. Fiji Content Creator, Henry Steele, emphasized their role in not only educating but also amplifying awareness on critical issues such as climate change.

“The workshop was very informative and left me with more knowledge on climate change and NDCs. It was a very interesting experience to see first hand the struggles of people facing the affects of climate change”.

Judaxx, content creator, NZ





The Regional Pacific NDC Hub, in its third project phase (from July 2022 to September 2024), has made Gender and Social Inclusion (GESI) a central element in all its activities. This aligns with the strategic plan, covering the period through 2030, which builds on the request from focal points submitted on August, 2022.

As part of this initiative, the NDC Hub engaged a gender consultant from September 1, 2023, to November 10, 2023, to conduct a comprehensive gap analysis for GESI across the 14 countries. The consultant's work is crucial in identifying gaps and opportunities for integrating gender and social inclusion into climate action strategies.

Traditionally men have more authority and rights than women; women have few if any rights to inherit land or formally own property, or to take part in public decision making, with an exception made for paramount chiefs who inherit chiefly titles.



"This gap analysis is an essential step towards ensuring that our climate actions are inclusive and equitable, addressing the unique vulnerabilities and strengths of all community members, particularly women and marginalized groups."

Aliti Vunisea, Gender Specialist



LESSONS LEARNT

Under this project phase, the NDC Hub has done a brief lessons learnt & best practices to ensure that we maintain accountability and transparency, contributing to a learning culture, and improving stakeholder satisfaction. Below summarises the key area.



**ESTABLISHING
FRIENDSHIPS
& CONNECTIONS**



**USING PACIFIC
EXPERIENCE
& SOLUTIONS**



**SUPPORTING
LOCAL CAPACITY
DEVELOPMENT**



**ENSURING IMPACT
ON THE GROUND**



“

“Relationships in the Pacific are at the very fabric of what keeps our communities together, binds together our Pacific Islander kainaga and ensures the effective implementation work at the NDC Hub. The relationships with our Focal Points are key to our work, thus ensuring this is respected and reciprocated is paramount in servicing the Pacific and its NDC-related needs.”

Sagaitu Konusi, Technical Adviser, GIZ

“There has been key insights and effective practices for NDC implementation in Pacific Island countries. By employing regional experiences and solutions, fostering robust connections, and engaging local Pacific consultants, we enhance local capacity and instil a greater sense of ownership and responsibility towards the project. This ensures our initiatives have a lasting, relevant, and sustainable impact on the ground.”

Vanda Faasoa-Chan Ting, Technical Adviser, SPREP

“Fostering collaborative approaches among diverse stakeholders, adapting to country-specific needs, prioritizing local capacity building, and enhancing communication and coordination across all levels are vital aspects, underscoring the importance of establishing strong partnerships with country focal points from the outset.”

Roshika Gaunder, Senior Program Associate - Pacific NDC Hub, GGGI

“Engaging with the Focal Points at an early stage is crucial for the NDC Hub as it allows us to understand and evaluate the specific training requirements. This approach enables us to deliver tailored training sessions and support that are designed to meet the unique needs of our member countries.”

Roxane Degueuse, Project Implementation and Finance Officer, SPC

”



REGIONAL PACIFIC NDC HUB

3 LUKE STREET,
SUVA-NABUA
FIJI ISLANDS

+(679) 337 9480
INFO@PACIFICNDC.ORG





REGIONAL
PACIFIC
NDC HUB

PACIFICNDC.ORG

