



Vanuatu Central

Sub-national historical and projected climate overview



GREEN
CLIMATE
FUND



**KLAEMET
SAVE**
REDI · ADAPT · PROTEKT



Sustainable, transformative and resilient for a Blue Pacific



Vanuatu Central:

sub-national historical and projected climate overview

SUB-NATIONAL SUMMARY



This publication should be cited as:

CSIRO, SPREP and VMGD (2023). Vanuatu Central: sub-national historical and projected climate overview. A report to the Van-KIRAP project. Commonwealth Scientific and Industrial Research Organisation (CSIRO), Secretariat of the Pacific Regional Environment Programme (SPREP) and Vanuatu Meteorology and Geo-hazards Department (VMGD), CSIRO Technical Report, Melbourne, Australia.

The authors and contributors to the report:

Leanne Webb (CSIRO)

Vanessa Round (CSIRO)

Vanessa Hernaman (CSIRO)

Kevin Hennessy (Climate Comms)

The project team would like to acknowledge Geoff Gooley and Rebecca Gregory (CSIRO) for reviewing the report and Amanda Opanubi for assistance in preparing the final publication.

© Commonwealth Scientific and Industrial Research Organisation (CSIRO) 2023. To the extent permitted by law, all rights are reserved, and no part of this publication covered by copyright may be reproduced or copied in any form or by any means except with the written permission of CSIRO.

Important Disclaimer

CSIRO advises that the information contained in this publication comprises general statements based on scientific research. The reader is advised and needs to be aware that such information may be incomplete or unable to be used in any specific situation. No reliance or actions must therefore be made on that information without seeking prior expert professional, scientific and technical advice. To the extent permitted by law, CSIRO (including its employees and consultants) excludes all liability to any person for any consequences, including but not limited to all losses, damages, costs, expenses and any other compensation, arising directly or indirectly from using this publication (in part or in whole) and any information or material contained in it.

CSIRO is committed to providing web accessible content wherever possible. If you are having difficulties with accessing this document please contact csiro.au/contact

The project team would like to acknowledge Rebecca Gregory and Gina Ishmael for images used on the front cover.

Contents

Summary	1
Introduction	2
Observed averages and trends	3
Temperature and rainfall mean and extremes	3
Tropical cyclones	4
Ocean temperature	4
Sea level	5
Climate projections	6
Average temperature and rainfall	6
Extreme temperature and rainfall	7
Tropical cyclones	8
Ocean temperature	9
Sea level rise and coastal inundation	10
Recent reports and associated data relating to current and future climate in Vanuatu	11
References	12

Summary

Vanuatu has a warmer and wetter season from November to April and a slightly cooler and drier season from May to October.

Variability in rainfall and cyclone activity is strongly affected by the South Pacific Convergence Zone (SPCZ) and the El Niño Southern Oscillation (ENSO). In El Niño years, the SPCZ moves north-east in the western tropical Pacific, leading to drier conditions and fewer cyclones over Vanuatu. In La Niña years, the SPCZ moves south-west, leading to wetter conditions and more cyclones over Vanuatu.

The climate is changing. Vanuatu has warmed by 0.7 °C since the pre-industrial period (1850–1900), hot days have increased, cold days have decreased, marine heatwaves have become more frequent and sea level has risen. However, there has been little change in annual average rainfall or extreme daily rainfall. The number of cyclones has decreased since 1971 but the intensity has increased.

Climate projections for the 21st century are derived from climate model simulations driven by different greenhouse gas emissions scenarios. Temperature is projected to continue increasing, with little change in seasonal average rainfall, and an increase in extreme daily rainfall (Table 1). Sea level is projected to continue rising, with more marine heatwaves, fewer cyclones but slightly increased cyclone intensity (Table 2). Extreme La Niña and El Niño events are projected to increase in future.

Summary of projected climate change for Vanuatu Central. Changes are provided for annual-average temperature, Nov-Apr rainfall, May-Oct rainfall and extreme daily rainfall intensity (with a 20-year return period). Changes are listed for four 20-year periods centred on 2030, 2050, 2070 and 2090, relative to a 20-year period centred on 1995, for two greenhouse gas emissions scenarios (low RCP2.6 and high RCP8.5). The median value is given with the 10th to 90th percentile range of uncertainty in brackets.

PERIODS	EMISSIONS	TEMPERATURE (°C)	RAINFALL NOV-APR (%)	RAINFALL MAY-OCT (%)	EXTREME RAINFALL (%)
2020-2039	RCP2.6	0.5 (0.4 to 0.7)	-2 (-10 to 7)	-2 (-12 to 9)	
	RCP8.5	0.7 (0.5 to 0.8)	0 (-15 to 7)	-2 (-16 to 13)	6 (-12 to 23)
2040-2059	RCP2.6	0.6 (0.5 to 1.0)	2 (-10 to 8)	-3 (-13 to 9)	
	RCP8.5	1.2 (0.9 to 1.6)	-2 (-17 to 10)	-4 (-22 to 13)	11 (-5 to 30)
2060-2079	RCP2.6	0.6 (0.4 to 0.9)	-4 (-15 to 8)	-5 (-17 to 9)	
	RCP8.5	1.9 (1.5 to 2.4)	-3 (-21 to 17)	-5 (-26 to 18)	14 (0 to 28)
2080-2099	RCP2.6	0.6 (0.4 to 1.0)	-2 (-19 to 8)	-5 (-20 to 4)	
	RCP8.5	2.7 (2.0 to 3.3)	0 (-26 to 18)	-4 (-32 to 28)	16 (9 to 54)

Summary of projected climate change for Vanuatu Central. Changes are provided for annual-average sea level (Kirono et al, 2023), cyclone wind speed intensity, cyclone frequency and marine heatwave frequency (MHW explainer). Changes are listed for four 20-year periods centred on 2030, 2050, 2070 and 2090, relative to a 20-year period centred on 1995, for two greenhouse gas emissions scenarios (low RCP2.6 and high RCP8.5). The median value is given with the 10th to 90th percentile range of uncertainty in brackets. ¹Knutson et al (2020) projections for the southwest Pacific. ²Van KIRAP (2023) projections for Malampa province.

PERIODS	EMISSIONS	SEA LEVEL (M)	CYCLONE INTENSITY (%)	CYCLONE FREQUENCY (%)	MARINE HEATWAVES (DAYS)
2020-2039	RCP2.6	0.13 (0.10-0.17)			
	RCP8.5	0.14 (0.10–0.18)			
2040-2059	RCP2.6	0.23 (0.17–0.30)			80–150
	RCP8.5	0.28 (0.22–0.37)	1 (-6 to 12) ¹	-12 (-40 to 0) ¹	170–300
2060-2079	RCP2.6	0.32 (0.24–0.43)			
	RCP8.5	0.48 (0.37–0.64)			
2080-2099	RCP2.6	0.42 (0.30–0.56)			110–190
	RCP8.5	0.73 (0.56–0.99)	4 (-6 to 16) ²		320–360

Introduction

This report provides a sub-national overview of historical and projected climate variability and change for Vanuatu Central (Figure 1). Vanuatu Central contains Malampa and Shefa provinces. Information is provided for mean and extreme temperature and rainfall, droughts, tropical cyclones, ocean temperature, sea level rise and coastal inundation. It draws on relevant data and information produced as part of the Van-KIRAP project [1], as well as published data and information where appropriate.

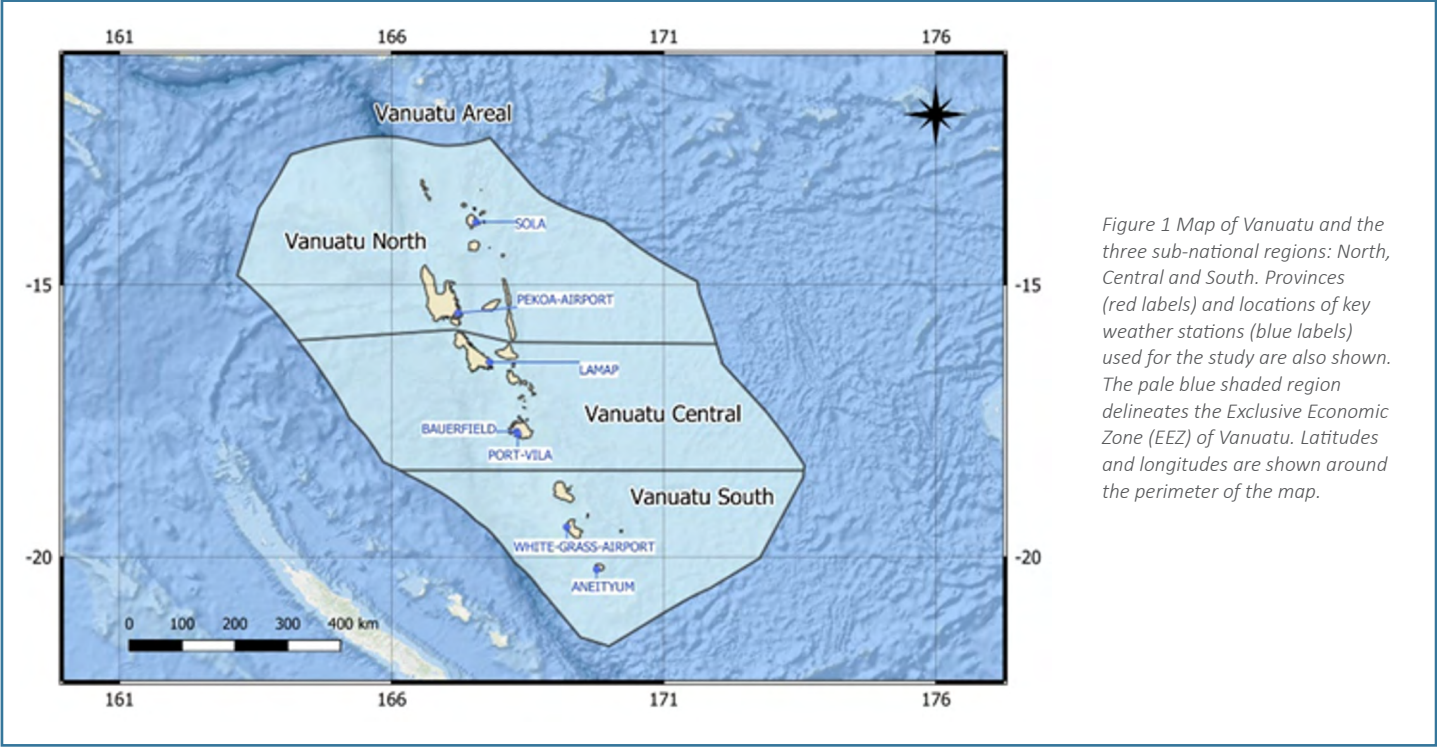


Figure 1 Map of Vanuatu and the three sub-national regions: North, Central and South. Provinces (red labels) and locations of key weather stations (blue labels) used for the study are also shown. The pale blue shaded region delineates the Exclusive Economic Zone (EEZ) of Vanuatu. Latitudes and longitudes are shown around the perimeter of the map.



Observed averages and trends

Temperature and rainfall

Vanuatu’s climate has two distinct seasons: a warmer, wetter season from November to April and a slightly cooler, drier season from May to October [2].

For Port Vila, mean monthly air temperatures ranged from around 23 to 27 °C during the period 1971–2000 [1]. Seasonal rainfall is strongly affected by the South Pacific Convergence Zone (SPCZ), while air temperatures are strongly connected with surrounding ocean temperatures [2].

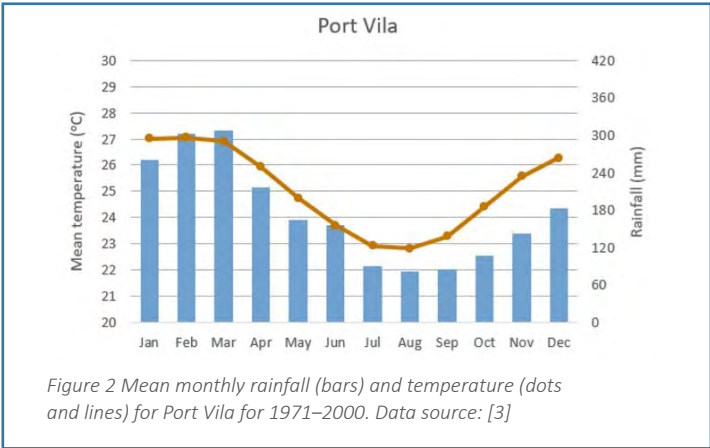


Figure 2 Mean monthly rainfall (bars) and temperature (dots and lines) for Port Vila for 1971–2000. Data source: [3]

Increasing concentrations of greenhouse gases are changing the climate. Vanuatu has warmed by 0.7 °C since the pre-industrial period (1850–1900) [4], hot days have increased, cold days have decreased, and sea level has risen. However, there has been little change in annual average rainfall, or dry spells [2]. Past mean annual temperature and rainfall variability are shown in Figure 3 [2].

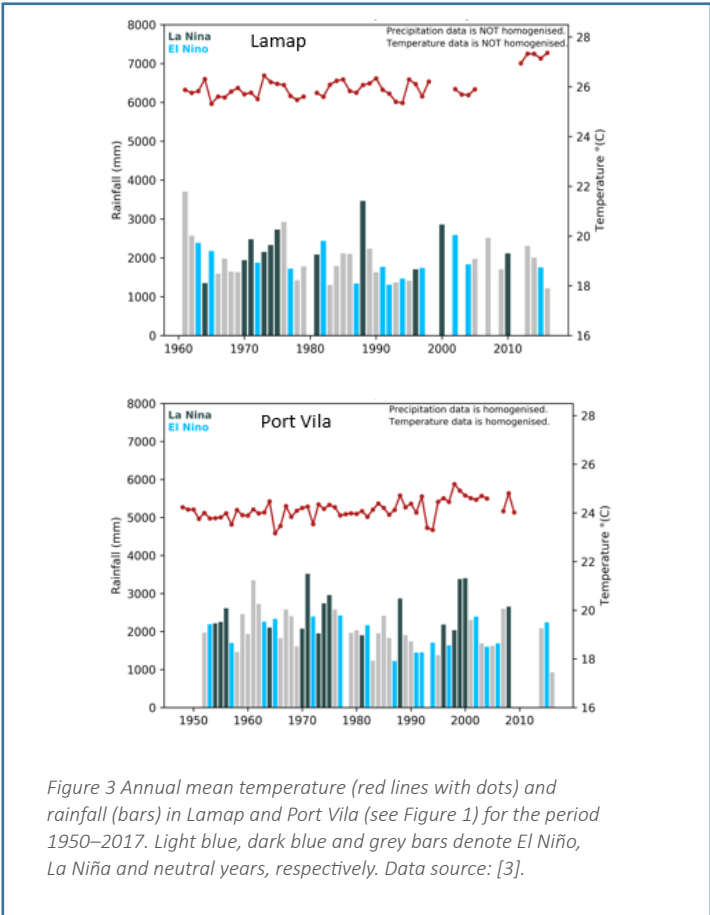


Figure 3 Annual mean temperature (red lines with dots) and rainfall (bars) in Lamap and Port Vila (see Figure 1) for the period 1950–2017. Light blue, dark blue and grey bars denote El Niño, La Niña and neutral years, respectively. Data source: [3].

Average values for daily extremes have been tabulated for three sites in Vanuatu Central (Table 1). Since 1950, There has been a clear warming of the hottest day and hottest night of the year, though little change in the coldest night of the year [1]. Increasing interannual variability for the number of warm nights and cold days since 1988 has also been detected [2]. Consistent with mean rainfall, maximum daily rainfall is highly variable year-to-year [1], with trends in annual total rainfall and extreme rainfall being small and statistically non-significant (Figure 3) [2]. The occurrence, duration and intensity of droughts (see [Drought explainer](#)) varies with location, with Bauerfield showing a non-significant decrease in drought occurrence [5].

Table 1 Daily extremes from weather station data. Average annual values are given with the minimum and maximum annual values in brackets, calculated over the 1986–2005 baseline period. Unless otherwise noted, the values are from unhomogenised data. Data source: [3]

Station	Annual hottest day (°C)	Annual hottest night (°C)	Annual coldest night (°C)	Annual max daily rainfall (mm)
Lamap	32.9 (32.0–34.0)	26.2 (25.0–27.0)	16.8 (13.5–19.9)	153 (83–341)
Bauerfield*	33.0 (32.1–34.0)	25.9 (24.8–27.3)	11.7 (9.1–14.1)	201 (71–539)
Port Vila*#	34.7 (34.0–35.4)	26.0 (25.2–26.9)	11.7 (10.3–13.8)	167 (77–377)

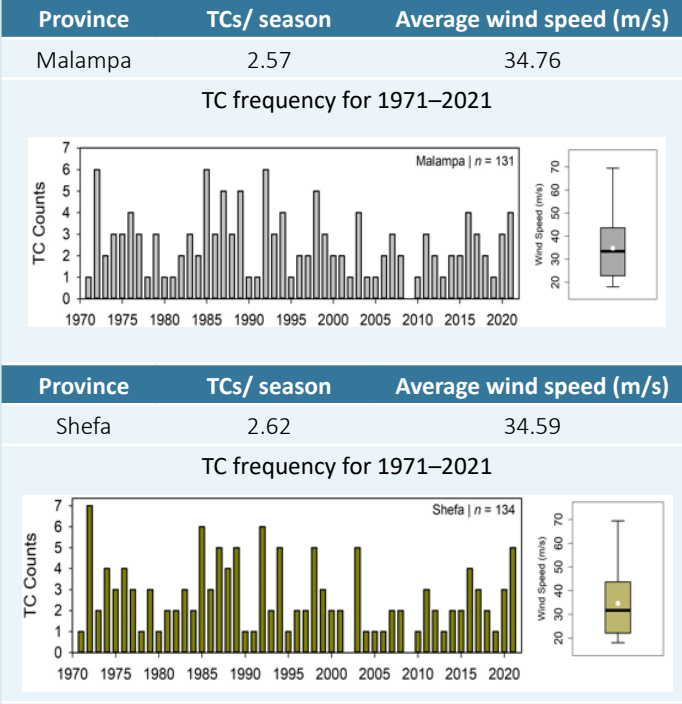
*Temperature data for Bauerfield and Port Vila are homogenised.
#Rainfall data for Port Vila are homogenised. Additionally, years with more than 10 % missing data were removed and manual quality control was applied to remove obvious data errors.

The El Niño Southern Oscillation (ENSO) is a natural, large-scale driver of climate variability in the Pacific, affecting rainfall and temperature [2]. The El Niño phase of ENSO is associated with droughts [5, 6]. This is because in El Niño years the SPCZ moves north-east in the Pacific, leading to drier conditions over Vanuatu. In La Niña years, the SPCZ moves south-west, leading to wetter conditions over Vanuatu [7]. (See [Climate variability explainer](#)).

Tropical cyclones

The frequency of tropical cyclones (TCs) affecting the whole Vanuatu archipelago has declined by ~28 % over the period 1996–2021 compared with 1971–1995 [8]. Observed cyclone numbers have been higher in the south than the north of Vanuatu [8]. Cyclone attributes for Vanuatu Central are presented in Table 2.

Table 2 Observed number (n) of tropical cyclones (TCs) that have occurred within 500 km of provinces in Vanuatu Central (1971–2021). Wind speed distributions (boxplots) for the same period are also shown, where the black line represents the median and white dot is the mean. Data source: SPEArTC; [9].



The proportion of severe tropical cyclones (winds greater than 17.5 m/s) has increased over recent decades in Vanuatu, consistent with expectations due to climate change [10]. The severity (i.e. wind speed intensities) of TCs passing near Vanuatu has increased by ~15 % over the period 1996–2021 compared with 1971–1995 [8], due to an increase in greenhouse gases [11].

The TC-related, mean seasonal, maximum daily rainfall has increased considerably over recent decades (i.e. ~20 mm per day between the periods 1970–1993 and 1994–2018) [12].

TCs within 500 km of Vanuatu have been more frequent during La Niña years (~13 cyclones per decade) than during El Niño and neutral years (~9 cyclones per decade) [8].

For more details, see the [Tropical cyclone explainer](#).

Ocean temperature

In Vanuatu annual average sea surface temperatures (SST) range from about 25.5 °C to 28.5 °C from south to north (Figure 4). For Vanuatu Central, SST ranges from 26.5 °C to 27.5 °C.

Through the period 1982–2021 the SST has been warming in Vanuatu Central, with Pango shown here as an example (Figure 4; top). While the number of marine heatwaves (MHWs) is around 25 per year on average, the total number and severity of MHW events has been increasing (Figure 4; third from top), and this is evident across the region more generally (Figure 4; bottom). For more information on MHW categories see the [MHW explainer](#).

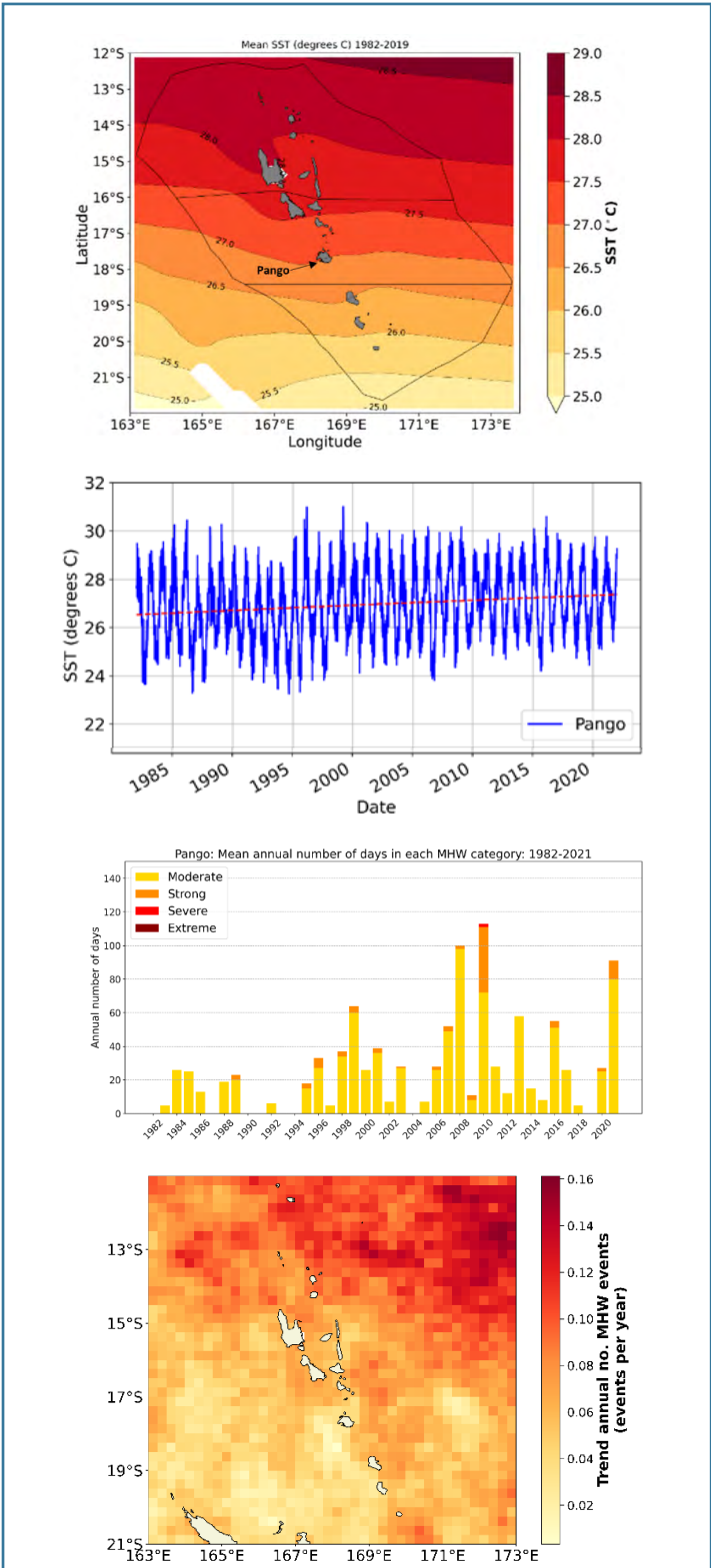
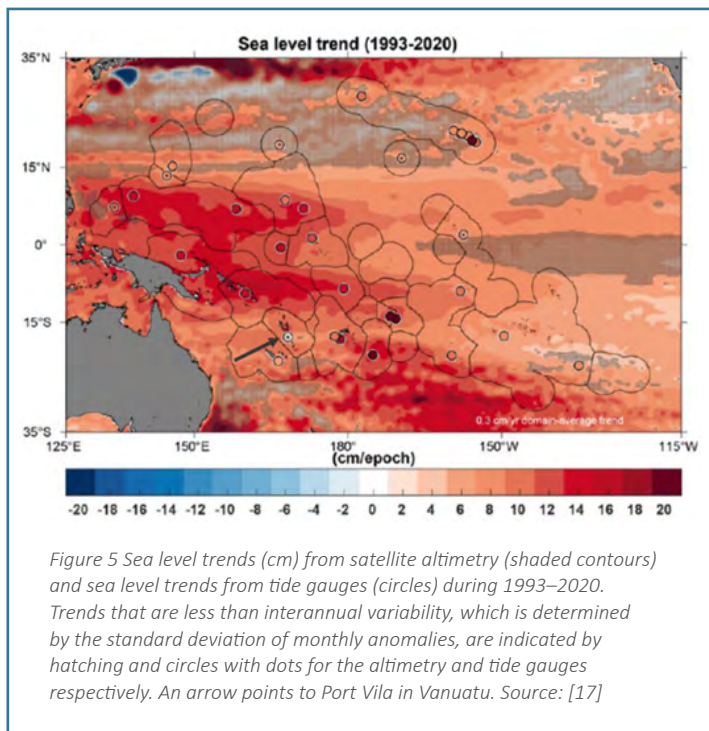


Figure 4 Vanuatu mean SST (°C) (1982–2019) (top). SST (°C) timeseries from 1982–2021 for the Pango region (blue line; second from top). Annual number of days in each marine heatwave category over the period 1982–2021 (third from top). Trend in annual number of MHW events (bottom). Events are defined as: a discrete, prolonged and anomalously warm water event which lasts for five or more days, with temperatures warmer than the 90th percentile. MHWs are considered as separate events if they are separated from a previous MHW by more than two days, Hobday et al. [13, 14]. Source data: NOAA OISST v2-1 SST [15].

Mangaliliu, Epao, Etmen and Pango were assessed for heatwave characteristics, through the period 1982–2021. Most sites experienced MHWs that were in the Moderate or Strong category, and only one site (Pango) experienced a Severe category marine heatwave. All sites showed a higher incidence of MHW days in later years compared to earlier years. For more details, see the [MHW explainer](#).

Sea level

In the western tropical Pacific, including around Vanuatu, sea levels measured by satellites have risen faster than in the central and eastern parts of the tropical Pacific [16], by about 10–15 mm since 1993 [17] (Figure 5).



Port Vila has experienced less sea level rise relative to the land because vertical land motion due to earthquakes around 2008, offset some of the effect of sea level rise [18]. For the period 1993–2020 the Port Vila tide gauge¹, which measures water levels relative to land, indicates no long-term trend in sea level (Figure 5, arrow). The coastal flood frequency has not increased for Port Vila, counter to the overall increasing flood frequency trends for the Pacific region. This countertrend may change in the future depending on whether local vertical land motion keeps pace with sea level rise.

The interannual-to-multidecadal variability of SST, rainfall, and relative sea level around Vanuatu is influenced by ENSO. Above-normal sea levels were recently observed during the prolonged 2020–2023 La Niña event [19]. (See [Climate variability explainer](#)).



© Geoff Gooley

¹Where tide gauge data are not available, e.g. in Northern and Southern Vanuatu, rate and magnitude of vertical land movement is unknown.

Climate projections

Climate projections for the coming decades are affected by uncertainty about future greenhouse gas concentrations, regional climate responses to those gases, and natural climate variability. Emissions pathways (see [Greenhouse gas emissions factsheet](#)) range from very low to very high and are based on plausible assumptions about future demographic change, socio-economic development, energy use, land use and air pollution. Climate models (see [Climate models factsheet](#)) are driven by projected changes in greenhouse gas and aerosol concentrations to estimate future changes in regional climate. There are dozens of climate models, each of which produces a unique simulation of future climate. The simulations include natural climate variability (see [Climate variability explainer](#)) on a range of spatial and temporal scales, including daily/local weather and yearly/regional climate extremes due to factors such as ENSO.

Average temperature and rainfall

The mean annual temperature for Vanuatu Central is projected to increase (Figure 6, top three plots), adding to the historical warming. The projections are similar for all three sub-national regions and across the wet and dry season. The magnitude of warming is highly dependent on the greenhouse gas emissions pathways, with the largest temperature increase under a high emissions pathway (RCP8.5) [1].

There is significant uncertainty about projected change in annual average rainfall for Vanuatu, including Vanuatu Central (Figure 6, bottom three plots). Some climate models show an increase, others show a decrease. There is a slight tendency for the multi-model median to show a reduction in rainfall in the dry season, and this tendency becomes more pronounced in the latter part of the 21st century under all emissions pathways [1].



© Raviky Talae

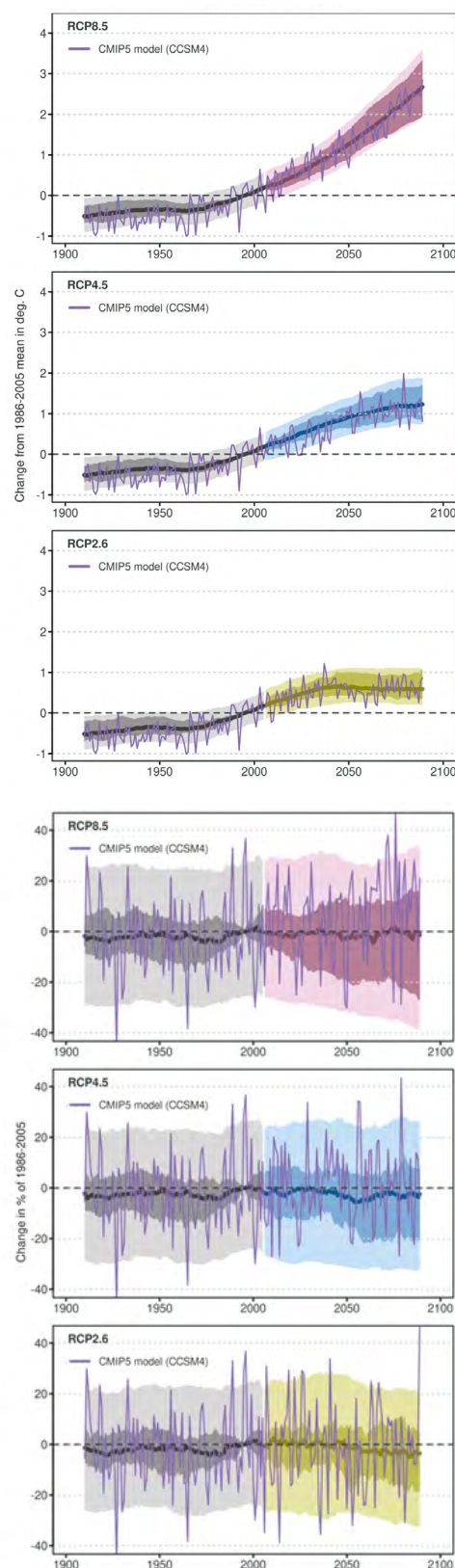


Figure 6 Vanuatu Central average temperature (top three plots) and rainfall (bottom three plots) for 1910–2090 as simulated by up to 38 global climate models relative to the 1986–2005 baseline. The thick line is the multi-model median value, and the shading is the 10th and 90th percentile range of 20-year running means (inner) and single year values (outer). The grey shading indicates the period of the historical simulation, while the future scenarios are shown with colour-coded shading: high RCP8.5 (purple), medium RCP4.5 (blue) and low RCP2.6 (green). An example of a climate model annual timeseries is shown as the thin purple line. See Kirono et al. [1] for associated data.

Extreme temperature and rainfall

Extreme daily temperatures are projected to rise by a similar magnitude to mean temperatures (Figure 7 and Figure 8). This means more extremely hot days and heatwaves. Extreme daily rainfall is generally projected to become more intense over Vanuatu Central (Figure 9) [1], so floods are likely to occur more often.

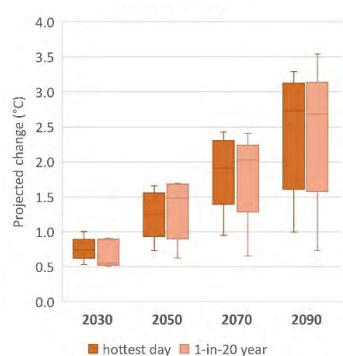


Figure 7 Projected changes in the annual hottest day of the year and the 1-in-20-year hottest day (i.e. temperature that has on average a 5 per cent chance of happening in any given year) for Vanuatu Central over four future time periods (2030, 2050, 2070, 2090). Changes are relative to a 1986–2005 baseline.

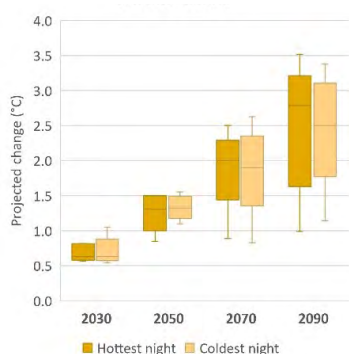


Figure 8 Projected changes in the annual hottest night (°C) and the annual coldest night (°C) for Vanuatu Central over four future time periods (2030, 2050, 2070, 2090). Changes are relative to a 1986–2005 baseline.

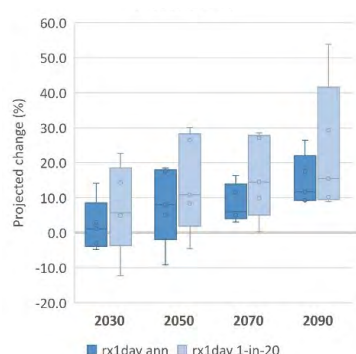


Figure 9 Projected per cent change in annual maximum daily rainfall (rx1day) and 1-in-20-year extreme maximum daily rainfall (i.e. an event that has on average a 5 per cent chance of happening in a particular year) for Vanuatu Central, for four future time periods. The small circles show the individual climate models. Changes are relative to a 1986–2005 baseline.

The box plots show the multi-model minimum and maximum; 25th and 75th percentile; and median (50th percentile) based on the five regional climate model simulations under a high emissions scenario (RCP8.5). See Kirono et al. [1] for related data.

Drought intensity, frequency and duration have been estimated using the Standardized Precipitation Index (SPI) (see [Drought explainer](#)). Most models project a shift toward more intense droughts (Figure 10) [1]. Projections for drought duration and frequency are less clear because there is a large range of uncertainty, with both increases and decreases possible.

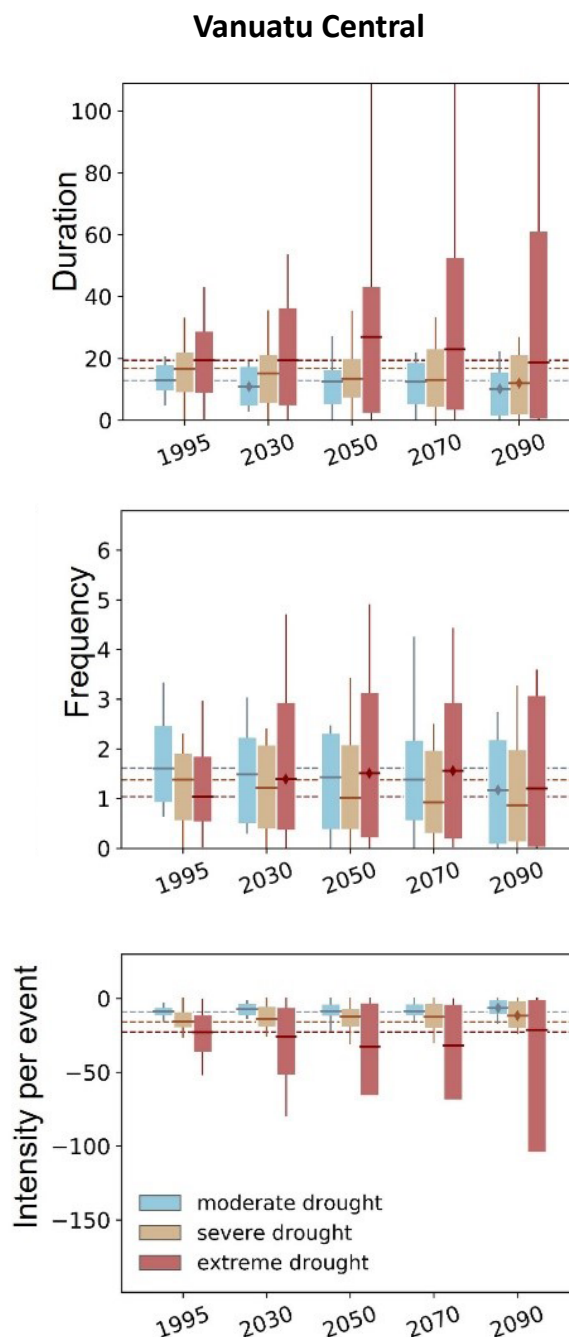


Figure 10. Vanuatu Central average of drought duration (top), frequency (middle) and intensity (bottom) in the reference period (20 years centred on 1995) and future periods (20 years centred on 2030, 2050, 2070, 2090) for a high greenhouse gas emissions pathway (RCP8.5) based on the Standardized Precipitation Index (SPI). Different drought categories (moderate, severe, and extreme; see [Drought explainer](#)) are given. Drought duration is in months, frequency is number of drought events per 20-year period, while intensity is unitless (NB: the more negative the value the more intense the event). Results from 34 climate model simulations are shown as the median (50th percentile), 10th and 90th percentile (bars) and minimum and maximum values (whiskers). The dashed lines show the multi-model median for the baseline period for each drought category [20, 21]. The SPI is calculated monthly with the value for each month representing the rainfall anomaly over the past 12 months.

Tropical cyclones

Ongoing increases in greenhouse gas emissions will lead to decreases in the average number of TCs in the Vanuatu region [1, 8, 22-24] (low-medium confidence). A reduction of up to one TC per decade has been projected by the end of the century for Vanuatu (high emissions scenario; RCP8.5), with higher reductions in the northern region (Figure 11) [1] (see [Tropical cyclone explainer](#)).

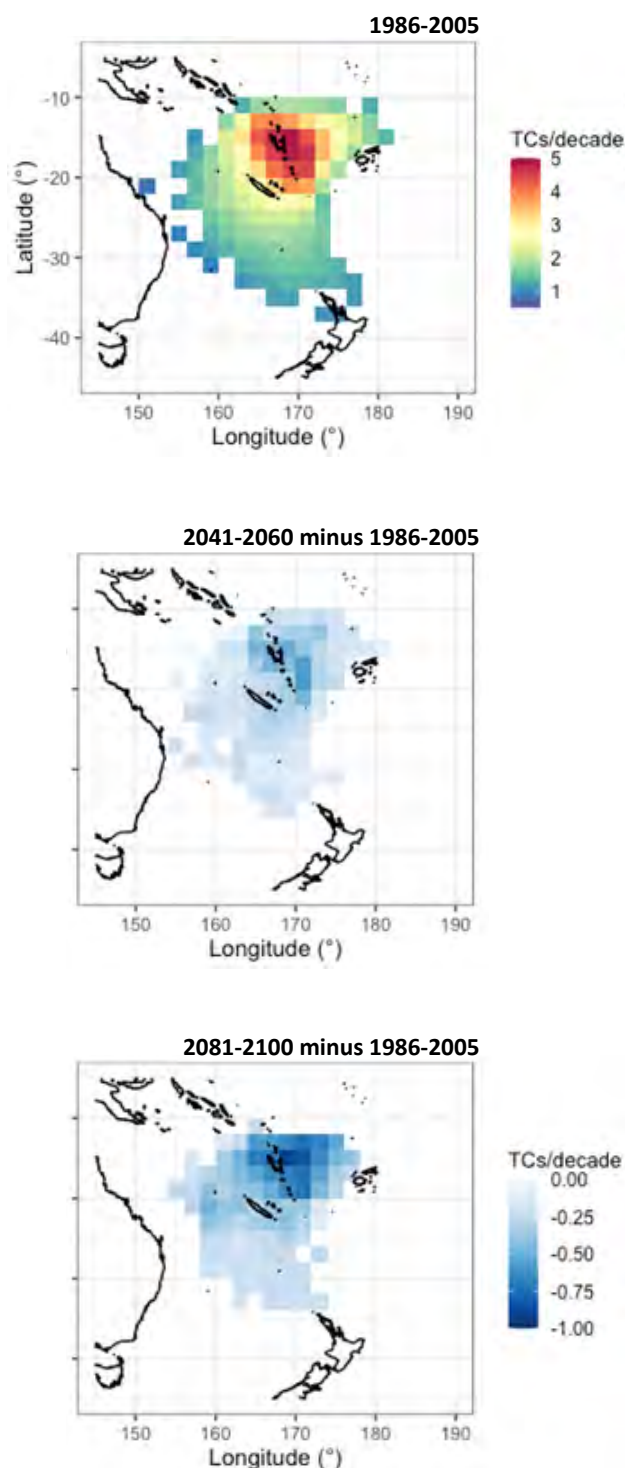


Figure 11 Average number of tropical cyclones (TCs) for the historical period (1986–2005 top panel), and the projected change in the number of cyclones for the mid-century (2041–2060 central panel) and late-century (2081–2100 bottom panel) under a high emissions scenario (RCP8.5) (see [Emission scenarios factsheet](#)). These data are based on the MIT synthetic cyclone tracks model driven by a set of eight CMIP5 global climate models. Note the cyclone trend per decade scale is negative. Source [1].

While TC frequency is projected to decrease for the south-west Pacific region, including Vanuatu, more cyclones are projected in future during El Niño conditions compared with present-climate El Niño conditions, with fewer cyclones in future during La Niña conditions compared with present-climate La Niña conditions (medium confidence) [25].

Average TC wind speed intensity for severe cyclones (categories 3–5) is projected to increase slightly (medium confidence) [8] (Figure 12). For extreme daily wind speeds with return periods of 10–100 years, the projected increase in intensity is 2.4 % and 3.2 % for Malampa and Shefa respectively, but these changes are not statistically significant [8].

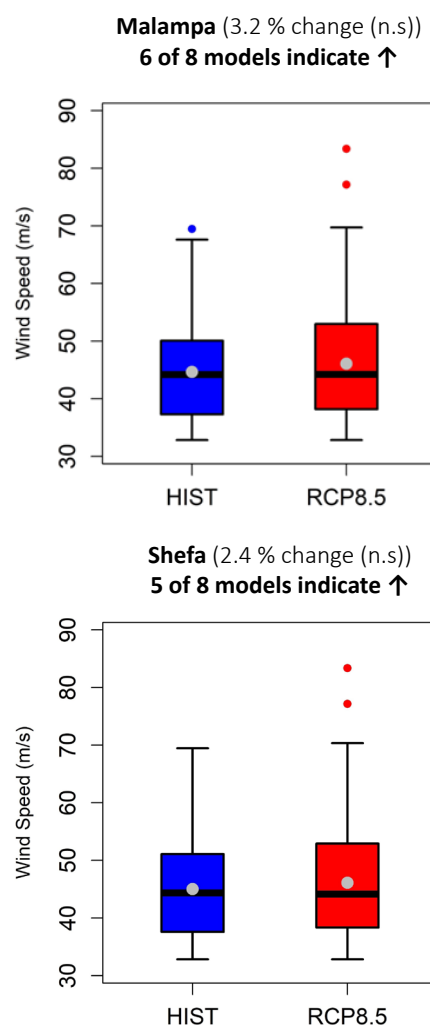
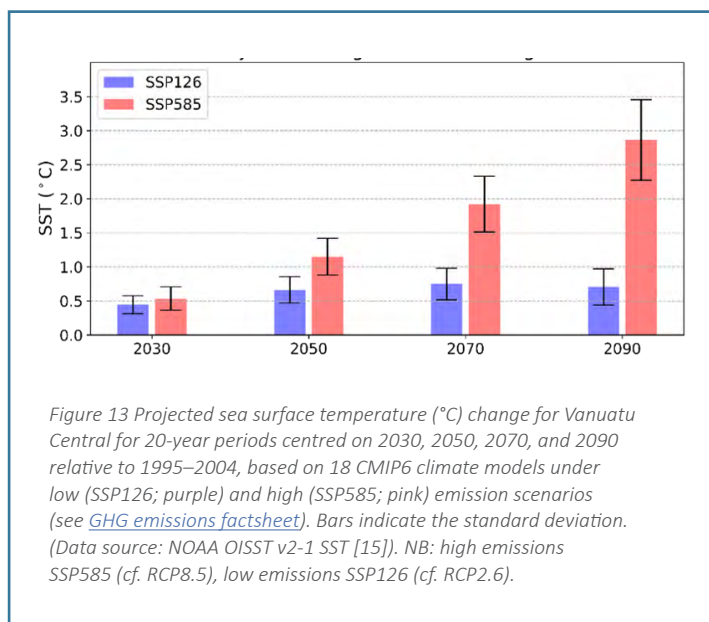


Figure 12 Historical (1970–2000; HIST) and projected (2070–2100; RCP8.5) severe cyclone wind speed (m/s) for Malampa (top) and Shefa (bottom) provinces [8]. Boxplots indicate the range of maximum cyclone wind speed. For each province, the average percent change in wind speed is noted, as well as climate model consensus information, with 'n.s.' indicating a change that is not statistically significant. Severe cyclones are defined as category 3–5. Historical data were extracted for a 500 km buffer around each province using the South Pacific Enhanced Archive of Tropical Cyclones (SPEARTC; [9]). Projections are derived from eight climate models following Chand et al. (2017) and Bell et al. (2019) [23, 25].

Sea level rise and an increase in extreme sea level events are projected, which may exacerbate cyclone impacts near the coast [8, 24, 26, 27]. In Pacific Ocean basins, the TC-related rainfall rate is projected to increase (high confidence) [12, 24]. Poleward movement of TCs is possible, but there is substantial uncertainty (low-medium confidence). (See [Tropical cyclone explainer](#) for more detailed information).

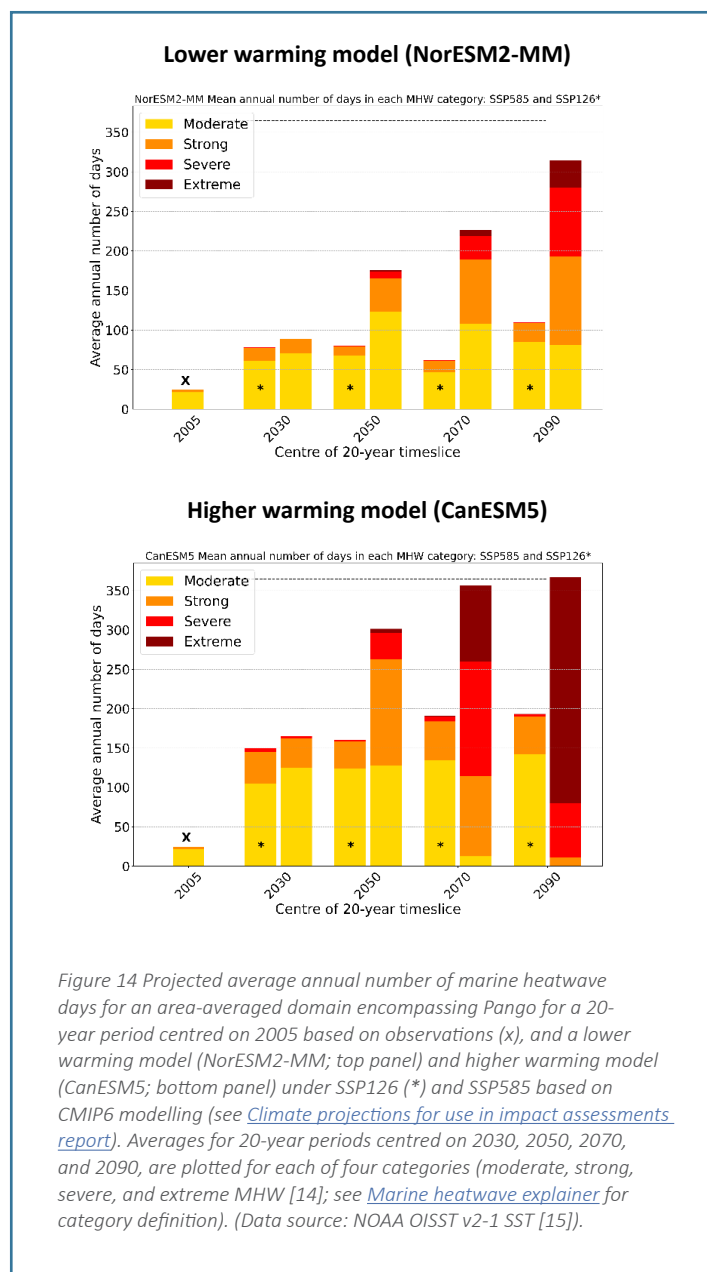
Ocean temperature

Over the 21st century the ocean is projected to continue warming, and compared to the 1995–2004 period, projected increases are around 0.7 °C by 2050 under low emissions, and around 1.1 °C under high emissions (Figure 13).



Historically for Pango, a site important to the fisheries sector, located in Vanuatu Central, the typical number of MHW days is around 25 per year (1982–2021) (Figure 14). Under the low emissions scenario (SSP126), this increases to about 80–150 days per year by 2050 (Figure 14). Under the high emissions scenario (SSP585), this increases to about 170–300 days per year by 2050, with many days in the "Strong" and "Severe" MHW categories (Figure 14).

By 2090, larger increases in MHWs are projected. For a low emissions scenario, the number of MHW days is 110–190, with a substantial increase in 'Strong' events. For a high emissions scenario, the number of MHW days is 320–360, with a big increase in 'Severe' and 'Extreme' events (Figure 14).

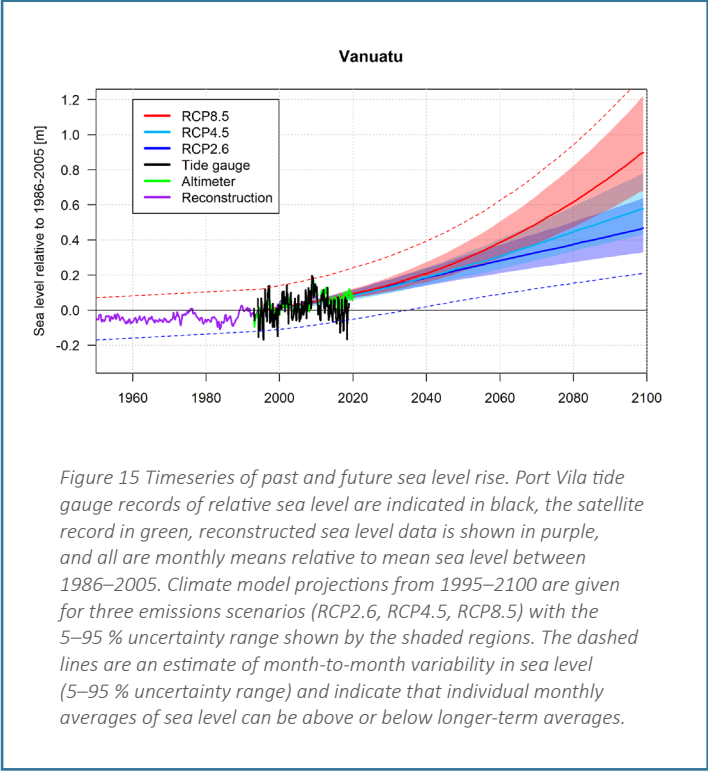


Sea level rise and coastal inundation

Sea level projections have been evaluated for Vanuatu and show a median rise of about 0.13 m by 2030. By 2050, the rise is 0.23 m for low emissions and 0.28 m for high emissions. By 2090, the rise is 0.42 m for low emissions and 0.73 m for high emissions (Table 3 and Figure 15) [4]. Vertical land motion may affect overall changes (see Climate variability explainer).

Table 3 Median sea level projections for Vanuatu with 5–95 % uncertainty range relative to 1986–2005 for RCPs 2.6, 4.5, and 8.5. Units are metres.

Year	RCP2.6	RCP4.5	RCP8.5
2030	0.13 [0.10–0.17]	0.13 [0.09–0.17]	0.14 [0.10–0.18]
2050	0.23 [0.17–0.30]	0.24 [0.18–0.31]	0.28 [0.22–0.37]
2070	0.32 [0.24–0.43]	0.37 [0.28–0.48]	0.48 [0.37–0.64]
2090	0.42 [0.30–0.56]	0.50 [0.38–0.68]	0.73 [0.56–0.99]



Projected extreme sea level frequencies and intensities are available for 2 km spacings along the Vanuatu coast (2377 points) (see Coastal inundation explainer). The projections, estimated for RCP2.6, RCP4.5 and RCP8.5 emissions scenarios, include information about tides, waves, storm surges, annual sea level variability and sea level rise. Extreme sea level intensities have been calculated for events with specific frequencies (sometimes called average recurrence intervals or ARIs). Table 4 shows that, for Lamap under a high emissions scenario, a 1-in-10-year extreme sea level event could increase on average from 0.96 m in the year 2000 to 1.24 m in 2050 and 1.71 m in 2090. The 1-in-50-year extreme sea level event could increase on average from 1.03 m in the year 2000 to 1.31 m in 2050 and 1.77 m in 2090.

Table 4 Mean extreme sea level intensity (m) for 40-year periods centred on 2000, 2050, and 2090 with average recurrence intervals (ARIs) of 10-years, 50-years and 100-years for selected sites in Vanuatu for RCP8.5 (see Van-KIRAP portal for more data points, and RCP2.6 and RCP4.5 emission scenarios). Node # corresponds with these datasets).

	Location	Node #	10-yr ARI	50-yr ARI	100-yr ARI
2000	Lamap	51686	0.96	1.03	1.05
	Port Vila	71667	0.86	0.92	0.95
2050	Lamap	51686	1.24	1.31	1.33
	Port Vila	71667	1.14	1.20	1.23
2090	Lamap	51686	1.71	1.77	1.79
	Port Vila	71667	1.60	1.66	1.69

When combined with information about buildings and critical infrastructure such as roads, bridges and other public amenities such as airports, hospitals, schools, evacuation centres etc., this information can highlight exposed assets and potentially vulnerable to coastal inundation (see Coastal inundation explainer, LiDAR factsheet and Roads infobyte).



© Rebecca Gregory



Recent reports and associated data relating to current and future climate in Vanuatu

In addition to the data and information in this factsheet, there are other data and information sources available from the Van-KIRAP project, including via the VMGD website and the Vanuatu Climate Futures Portal, as well as from various other regional Pacific projects and initiatives. Users are encouraged to review, access and wapply all such data as might be relevant to their needs. For purposes of undertaking climate hazard-based impact assessments for sectoral applications, best-practice projections require consideration of multiple lines of evidence according to guidelines provided by the Van-KIRAP project (see [Climate projections for use in impact assessments explainer](#)).

National and sub-national climate projections for Vanuatu. 2023 [1]

This report presents information about long-term climate change projections for Vanuatu and its sub-national regions. This includes projections of mean and extreme temperature and rainfall, droughts, and tropical cyclones. Information about the respective historical climatology and trends are also provided as context for the projection information. The report also highlights implications of the study, including examples of application of the climate projections information, and future research.

‘NextGen’ Projections for the Western Tropical Pacific: Current and Future Climate for Vanuatu. 2021 [4]

This report presents information about average temperature and rainfall change in Vanuatu, including historical change, interpretation of climate projections, understanding projections as they relate to ‘global warming levels’, and a set of future climate scenarios for Vanuatu using storylines. It also gives a summary of important new projections information on tropical cyclones, extreme rainfall and sea level rise, and gives a preview of the emerging set of new generation climate modelling.

Climate Change in the Pacific 2022: Historical and Recent Variability, Extremes and Change [28]

This report presents key scientific findings from the second phase of the Climate and Oceans Support Program in the Pacific (COSPPac, July 2018–June 2023), Seasonal Prediction and the Pacific Sea Level and Geodetic Monitoring (PSLGM) Projects. Chapter 1 provides a general introduction to the content, structure and methods used for each country report. Each subsequent country chapter has nine sections that provide: (1) a climate and ocean summary; (2) country description; (3) data availability; (4) rainfall seasonal cycle and observed trends; (5) air temperature seasonal cycle and observed trends; (6) tropical cyclone seasonal cycle and observed trends; (7) sea surface temperature (SST) seasonal cycle and observed trends; (8) sea level seasonal cycle and observed trends; and (9) wave climate, seasonal cycle, trends, and extreme value analysis. Trend lengths vary depending on data availability and quality.

Pacific Climate Change Monitor. 2021 [17]

This report describes variability and change in Pacific Island climates, drawing on the latest meteorological and oceanographic data, information, and analyses. The report primarily focuses on observed changes across the Pacific Islands region in general and includes some country-specific information. It also includes some information about projections and the social, environmental, and economic impacts of rapid climate change. This information is intended to facilitate communication among, and inform decisions of, a broad spectrum of public and private sector stakeholders.

Maps of the Past Climate of Vanuatu: Monthly rainfall and air temperature. 2023 [29]

A range of monthly and seasonal maps were developed by the New Zealand National Institute of Water and Atmospheric Research (NIWA) to illustrate historical average rainfall and air temperature for Vanuatu. These include:

- Monthly average air temperature and rainfall (24 maps)
- Average wet season and dry season (4 maps)
- Composite maps of seasonal and monthly temperature and rainfall patterns and anomalies for each ENSO phase (84 Maps)

References

1. Kirono, D., et al., *National and sub-national climate projections for Vanuatu*. 2023. Melbourne: CSIRO, Australia.
2. McGree, S., et al., *Climate Change in the Pacific 2022: Historical and Recent Variability, Extremes and Change*. 2022. SPC: Suva, Fiji.
3. Australian Bureau of Meteorology. *Pacific Climate Change Data Portal*. 2018. Available from: <http://www.bom.gov.au/climate/pccsp/>
4. CSIRO and SPREP, 'NextGen' Projections for the Western Tropical Pacific: Current and Future Climate for Vanuatu. 2021. CSIRO: Melbourne, Australia.
5. McGree, S., S. Schreider, and Y. Kuleshov, Trends and variability in droughts in the Pacific Islands and Northeast Australia. *Journal of Climate*, 2016. 29(23): p. 8377-8397.
6. Dhage, L. and M.J. Widlansky, Assessment of 21st century changing sea surface temperature, rainfall, and sea surface height patterns in the tropical Pacific Islands using CMIP6 greenhouse warming projections. *Earth's Future*, 2022. DOI: 10.1029/2021EF002524.
7. Tigona, R. and C. de Freitas, Relationship between the Southern Oscillation and rainfall in Vanuatu. *Weather and Climate*, 2012. 32(1): p. 43-50.
8. Sharma, K., et al., Impact of climate change on tropical cyclones over Vanuatu: A case for informing disaster planning and adaptation strategies. *Natural Hazards*, 2023 in prep.
9. Diamond, H., et al., Development of an enhanced tropical cyclone tracks database for the southwest Pacific from 1840 to 2010. *International Journal of Climatology*, 2012. 32(14): p. 2240-2250.
10. Kossin, J.P., et al., Global increase in major tropical cyclone exceedance probability over the past four decades. *Proceedings of the National Academy of Sciences*, 2020. 117(22): p. 11975-11980.
11. Emanuel, K., Evidence that hurricanes are getting stronger. *Proceedings of the National Academy of Sciences*, 2020. 117(24): p. 13194-13195.
12. Deo, A., et al., Tropical cyclone contribution to extreme rainfall over southwest Pacific Island nations. *Climate Dynamics*, 2021. 56: p. 3967-3993.
13. Hobday, A.J., et al., A hierarchical approach to defining marine heatwaves. *Progress in Oceanography*, 2016. 141: p. 227-238.
14. Hobday, A.J., et al., Categorizing and naming marine heatwaves. *Oceanography*, 2018. 31(2): p. 162-173.
15. Huang, B., et al., *NOAA 0.25-degree daily optimum interpolation sea surface temperature (OISST), version 2.1*. 2020. Available from: <https://psl.noaa.gov/data/gridded/data.noaa.oisst.v2.html>
16. Fasullo, J.T. and S.R. Nerem, Altimeter-era emergence of the patterns of forced sea-level rise in climate models and implications for the future. *Proc. Natl. Acad. Sci.*, 2018. 115(51): p. 12944-12949 DOI: 10.1073/pnas.1813233115.
17. Marra, J.J., et al., eds. *Pacific Islands Climate Change Monitor: 2021*. 2022, The Pacific Islands-Regional Climate Centre (PI-RCC) Network Report to the Pacific Islands Climate Service (PICS) Panel and Pacific Meteorological Council (PMC). Available from: <https://www.pacificmet.net/pacific-climate-change-monitor-report>
18. Brown, N.J., et al., Vertical motion of Pacific Island tide gauges: combined analysis from GNSS and levelling. *Geoscience Australia*, 2020 DOI: 10.11636/Record.2020.003.
19. Thompson, P.R., M.J. Widlansky, and Coauthors, Sea level variability and change [in "State of the Climate in 2021, Global Oceans"]. *Bull. Amer. Meteor. Soc.*, 2022. 103: p. S168-S172 DOI: 10.1175/BAMS-D-22-0072.1.
20. Iese, V., et al., Historical and future drought impacts in the Pacific islands and atolls. *Climatic Change*, 2021. 166(1): p. 1-24.
21. Kirono, D.G., et al., Drought projections for Australia: Updated results and analysis of model simulations. 2020. 30: p. 100280.
22. Tory, K.J., H. Ye, and G. Brunet, Tropical cyclone formation regions in CMIP5 models: a global performance assessment and projected changes. *Climate Dynamics*, 2020. 55(11-12): p. 3213-3237.
23. Bell, S.S., et al., Projections of southern hemisphere tropical cyclone track density using CMIP5 models. *Climate Dynamics*, 2019. 52: p. 6065-6079.
24. Knutson, T., et al., Tropical cyclones and climate change assessment: Part II: Projected response to anthropogenic warming. *Bulletin of the American Meteorological Society*, 2020. 101(3): p. E303-E322.
25. Chand, S.S., et al., Projected increase in El Niño-driven tropical cyclone frequency in the Pacific. *Nature Climate Change*, 2017. 7(2): p. 123-127.
26. CSIRO and SPREP, *Tropical Cyclones and Climate Change: implications for the Western Tropical Pacific*. 2022. CSIRO: Melbourne, Australia.
27. Deo, A., et al., Severe tropical cyclones over southwest Pacific Islands: economic impacts and implications for disaster risk management. *Climatic Change*, 2022. 172(3-4): p. 38.
28. McGree, S., et al., *Climate Change in the Pacific 2022: Historical and Recent Variability, Extremes and Change*. 2022. SPC: Suva, Fiji. p. 220. Available from: <https://library.sprep.org/content/climate-change-pacific-2022-historical-and-recent-variability-extremes-and-change>
29. Sturman, J. and A. Porteous, *Maps of the Past Climate of Vanuatu: Monthly rainfall and air temperature*. 2023. Available from: <https://drive.google.com/drive/folders/1KbjNiAL9-KrrvJ7PTWJlk9dNsi6uWOYR>